

**T Antibody**  
**Purified Mouse Monoclonal Antibody**  
**Catalog # AO1777a****Specification****T Antibody - Product Information**

Application	WB, IHC, FC, E
Primary Accession	<a href="#">O15178</a>
Reactivity	Human
Host	Mouse
Clonality	Monoclonal
Isotype	IgG1
Calculated MW	47.4kDa KDa

**Description**

The protein encoded by this gene is an embryonic nuclear transcription factor that binds to a specific DNA element, the palindromic T-site. It binds through a region in its N-terminus, called the T-box, and effects transcription of genes required for mesoderm formation and differentiation. The protein is localized to notochord-derived cells.

**Immunogen**

Purified recombinant fragment of human T (AA: 257-309 ) expressed in E. Coli.

**Formulation**

Purified antibody in PBS with 0.05% sodium azide

**T Antibody - Additional Information**

**Gene ID** 6862

**Other Names**

Brachyury protein, Protein T, T

**Dilution**

WB~~1/500 - 1/2000

IHC~~1/200 - 1/1000

FC~~1/200 - 1/400

E~~1/10000

**Storage**

Maintain refrigerated at 2-8°C for up to 6 months. For long term storage store at -20°C in small aliquots to prevent freeze-thaw cycles.

**Precautions**

T Antibody is for research use only and not for use in diagnostic or therapeutic procedures.

**T Antibody - Protein Information**

**Name** TBXT ([HGNC:11515](#))

**Synonyms** T

**Function**

Involved in the transcriptional regulation of genes required for mesoderm formation and differentiation. Binds to a palindromic T site 5'-TTCACACCTAGGTGTGAA-3' DNA sequence and activates gene transcription when bound to such a site.

**Cellular Location**

Nucleus

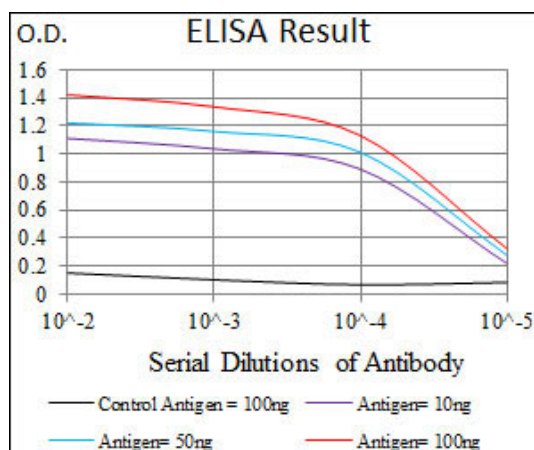
**Tissue Location**

Detected in testis, but not in other, normal tissues. Detected in lung tumors (at protein level)

**T Antibody - Protocols**

Provided below are standard protocols that you may find useful for product applications.

- [Western Blot](#)
- [Blocking Peptides](#)
- [Dot Blot](#)
- [Immunohistochemistry](#)
- [Immunofluorescence](#)
- [Immunoprecipitation](#)
- [Flow Cytometry](#)
- [Cell Culture](#)



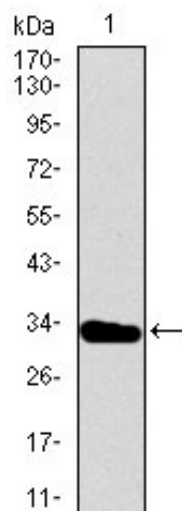


Figure 1: Western blot analysis using T mAb against human T recombinant protein. (Expected MW is 31.2 kDa)

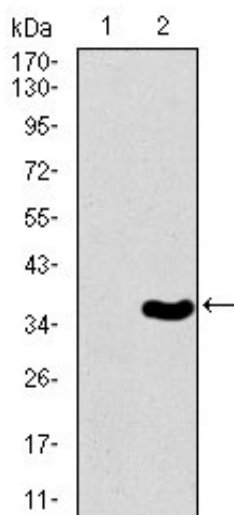


Figure 2: Western blot analysis using T mAb against HEK293 (1) and T (AA: 257-309)-hIgGFc transfected HEK293 (2) cell lysate.

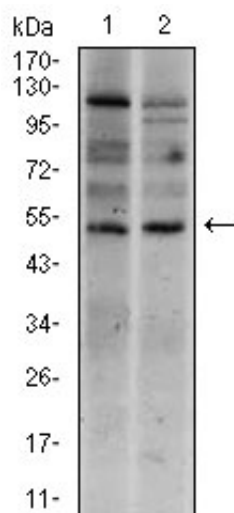


Figure 3: Western blot analysis using T mouse mAb against Raji (1), and Jurkat (2) cell lysate.

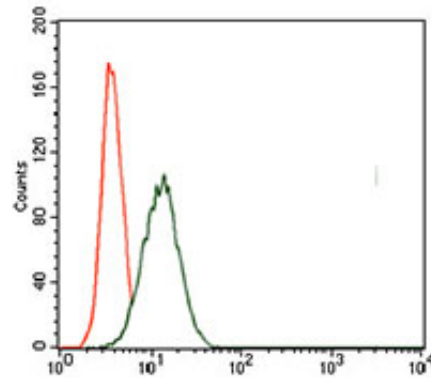


Figure 4: Flow cytometric analysis of HeLa cells using T mouse mAb (green) and negative control (red).

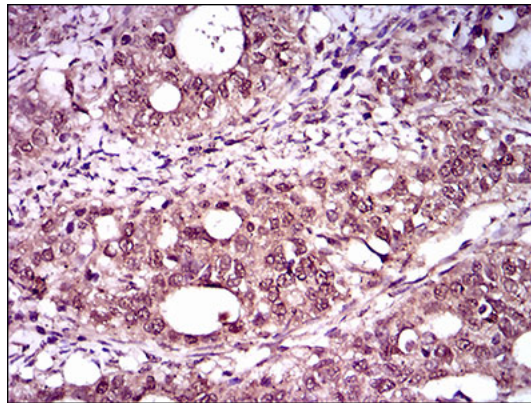


Figure 5: Immunohistochemical analysis of paraffin-embedded cervical cancer tissues using T mouse mAb with DAB staining.

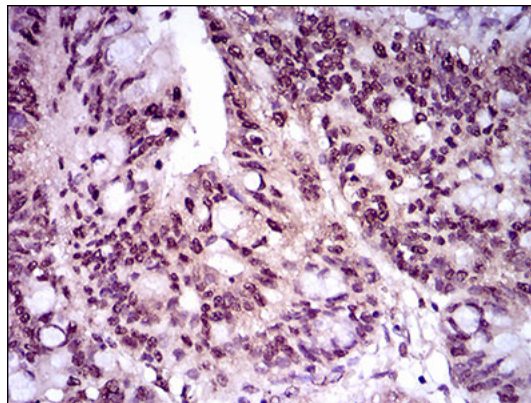


Figure 6: Immunohistochemical analysis of paraffin-embedded rectum cancer tissues using T mouse mAb with DAB staining.

## T Antibody - References

1. Am J Surg Pathol. 2008 Apr;32(4):572-80. 2. J Clin Neurosci. 2011 Jan;18(1):96-9.