

**CD7 Antibody**  
**Purified Mouse Monoclonal Antibody**  
**Catalog # AO1805a****Specification****CD7 Antibody - Product Information**

Application	<b>E, WB, IHC</b>
Primary Accession	<a href="#">P09564</a>
Reactivity	<b>Human</b>
Host	<b>Mouse</b>
Clonality	<b>Monoclonal</b>
Isotype	<b>IgG1</b>
Calculated MW	<b>25.4kDa KDa</b>

**Description**

This gene encodes a transmembrane protein which is a member of the immunoglobulin superfamily. This protein is found on thymocytes and mature T cells. It plays an essential role in T-cell interactions and also in T-cell/B-cell interaction during early lymphoid development.

**Immunogen**

Purified recombinant fragment of human CD7 (AA: 72-175) expressed in E. Coli.

**Formulation**

Purified antibody in PBS with 0.05% sodium azide

**CD7 Antibody - Additional Information**

**Gene ID** 924

**Other Names**

T-cell antigen CD7, GP40, T-cell leukemia antigen, T-cell surface antigen Leu-9, TP41, CD7, CD7

**Dilution**

E~~1/10000  
WB~~1/500 - 1/2000  
IHC~~1/200 - 1/1000

**Storage**

Maintain refrigerated at 2-8°C for up to 6 months. For long term storage store at -20°C in small aliquots to prevent freeze-thaw cycles.

**Precautions**

CD7 Antibody is for research use only and not for use in diagnostic or therapeutic procedures.

**CD7 Antibody - Protein Information**

**Name** CD7

## Function

Not yet known.

## Cellular Location

Membrane; Single-pass type I membrane protein.

## CD7 Antibody - Protocols

Provided below are standard protocols that you may find useful for product applications.

- [Western Blot](#)
- [Blocking Peptides](#)
- [Dot Blot](#)
- [Immunohistochemistry](#)
- [Immunofluorescence](#)
- [Immunoprecipitation](#)
- [Flow Cytometry](#)
- [Cell Culture](#)

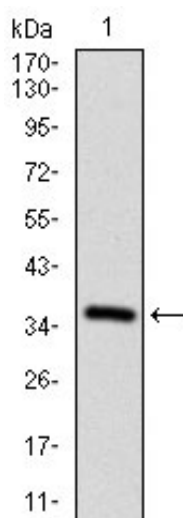
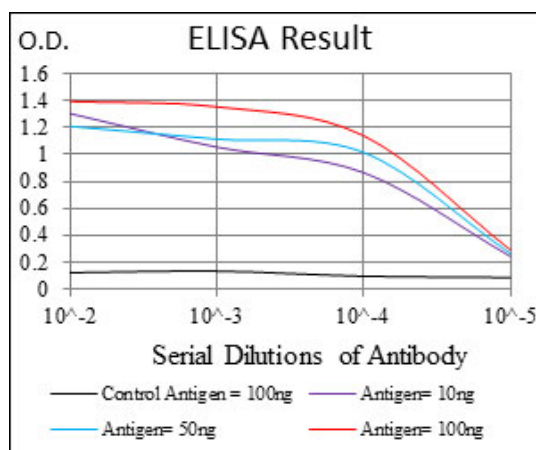


Figure 1: Western blot analysis using CD7 mAb against human CD7 recombinant protein. (Expected MW is 36.6 kDa)

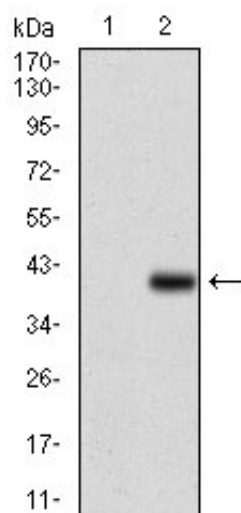


Figure 2: Western blot analysis using CD7 mAb against HEK293 (1) and CD7 (AA: 72-175)-hIgGFc transfected HEK293 (2) cell lysate.

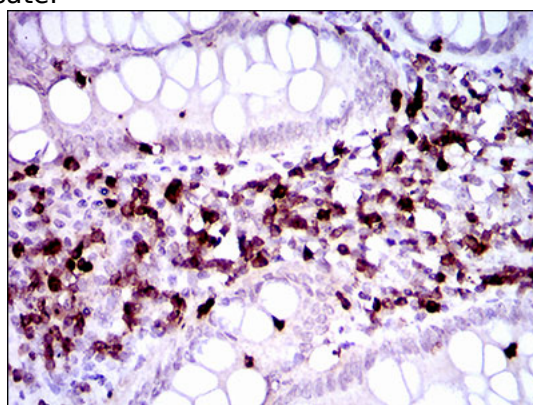


Figure 3: Immunohistochemical analysis of paraffin-embedded endometrial cancer tissues using CD7 mouse mAb with DAB staining.

### CD7 Antibody - Background

This gene encodes a transmembrane protein which is a member of the immunoglobulin superfamily. This protein is found on thymocytes and mature T cells. It plays an essential role in T-cell interactions and also in T-cell/B-cell interaction during early lymphoid development.

### CD7 Antibody - References

1. Mol Cancer. 2010 Feb 22;9:41.
2. J Hematol Oncol. 2010 Apr 14;3:15.