

PLIN2 Antibody
Purified Mouse Monoclonal Antibody
Catalog # AO1838a**Specification****PLIN2 Antibody - Product Information**

Application	WB, IHC, E
Primary Accession	Q99541
Reactivity	Human
Host	Mouse
Clonality	Monoclonal
Isotype	IgG1
Calculated MW	48kDa KDa

Description

The protein encoded by this gene belongs to the perilipin family, members of which coat intracellular lipid storage droplets. This protein is associated with the lipid globule surface membrane material, and maybe involved in development and maintenance of adipose tissue. However, it is not restricted to adipocytes as previously thought, but is found in a wide range of cultured cell lines, including fibroblasts, endothelial and epithelial cells, and tissues, such as lactating mammary gland, adrenal cortex, Sertoli and Leydig cells, and hepatocytes in alcoholic liver cirrhosis, suggesting that it may serve as a marker of lipid accumulation in diverse cell types and diseases. Alternatively spliced transcript variants have been found for this gene.

Immunogen

Purified recombinant fragment of human PLIN2 (AA: 286-437) expressed in E. Coli.

Formulation

Purified antibody in PBS with 0.05% sodium azide

PLIN2 Antibody - Additional Information

Gene ID 123

Other Names

Perilipin-2, Adipophilin, Adipose differentiation-related protein, ADRP, PLIN2, ADFP

Dilution

WB~~1/500 - 1/2000

IHC~~1/200 - 1/1000

E~~1/10000

Storage

Maintain refrigerated at 2-8°C for up to 6 months. For long term storage store at -20°C in small aliquots to prevent freeze-thaw cycles.

Precautions

PLIN2 Antibody is for research use only and not for use in diagnostic or therapeutic procedures.

PLIN2 Antibody - Protein Information

Name PLIN2 ([HGNC:248](#))

Synonyms ADFP

Function

Structural component of lipid droplets, which is required for the formation and maintenance of lipid storage droplets.

Cellular Location

Membrane {ECO:0000250|UniProtKB:P43883}; Peripheral membrane protein {ECO:0000250|UniProtKB:P43883}. Lipid droplet

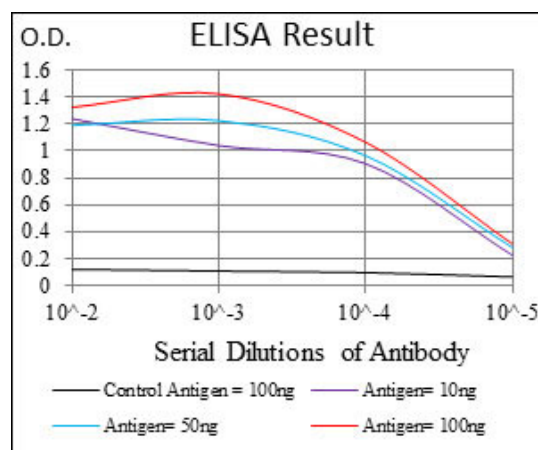
Tissue Location

Milk lipid globules..

PLIN2 Antibody - Protocols

Provided below are standard protocols that you may find useful for product applications.

- [Western Blot](#)
- [Blocking Peptides](#)
- [Dot Blot](#)
- [Immunohistochemistry](#)
- [Immunofluorescence](#)
- [Immunoprecipitation](#)
- [Flow Cytometry](#)
- [Cell Culture](#)



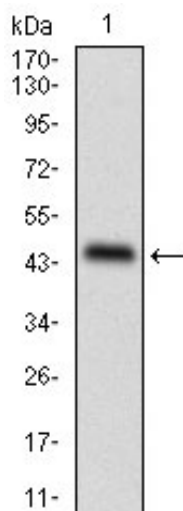


Figure 1: Western blot analysis using PLIN2 mAb against human PLIN2 recombinant protein. (Expected MW is 42.6 kDa)

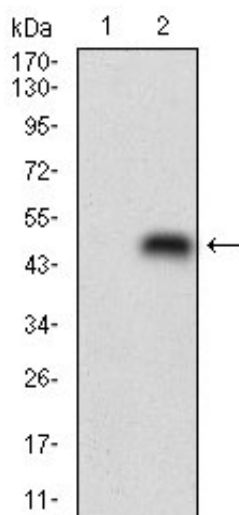


Figure 2: Western blot analysis using PLIN2 mAb against HEK293 (1) and PLIN2 (AA: 286-437)-hlgGfc transfected HEK293 (2) cell lysate.

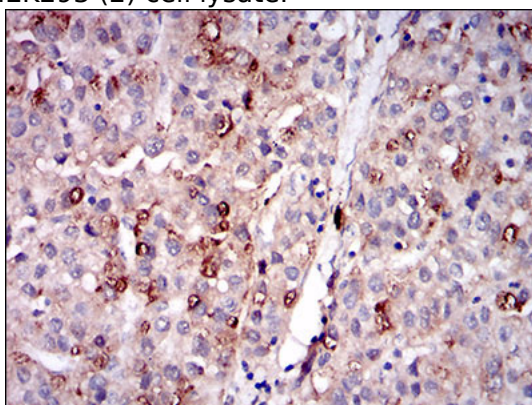


Figure 3: Immunohistochemical analysis of paraffin-embedded liver cancer tissues using PLIN2 mouse mAb with DAB staining.

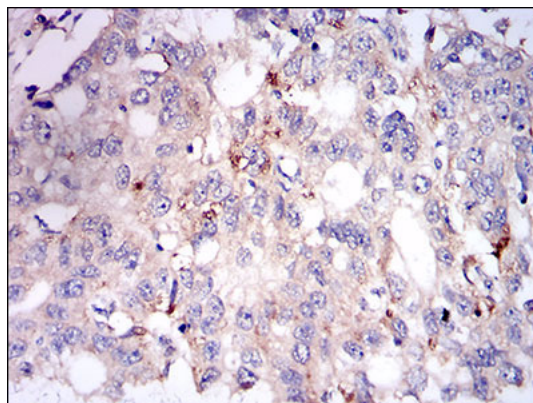


Figure 4: Immunohistochemical analysis of paraffin-embedded esophageal cancer tissues using PLIN2 mouse mAb with DAB staining.

PLIN2 Antibody - Background

This gene is a member of the caudal-related homeobox transcription factor gene family. The encoded DNA-binding protein regulates intestine-specific gene expression and enterocyte differentiation. It has been shown to induce expression of the intestinal alkaline phosphatase gene, and inhibit beta-catenin/T-cell factor transcriptional activity. ;

PLIN2 Antibody - References

1. Am J Physiol Endocrinol Metab. 2012 Nov 1;303(9):E1158-65. 2. Exp Physiol. 2012 Aug;97(8):970-80.