

PAPLN Antibody
Purified Mouse Monoclonal Antibody
Catalog # AO1859a**Specification****PAPLN Antibody - Product Information**

Application	E, WB
Primary Accession	O95428
Reactivity	Human
Host	Mouse
Clonality	Monoclonal
Isotype	IgG1
Calculated MW	137.7kDa KDa

Description

Papilin is an extracellular matrix glycoprotein involved in, thin matrix layers during gastrulation, matrix associated with wandering, phagocytic hemocytes, basement membranes and space-filling matrix during Drosophila development. Determination of its cDNA sequence led to the identification of Caenorhabditis and mammalian papilins. A distinctly conserved 'papilin cassette' of domains at the amino-end of papilins is also the carboxyl-end of the ADAMTS subgroup of secreted, matrix-associated metalloproteinases; this cassette contains one thrombospondin type 1 (TSR) domain, a specific cysteine-rich domain and several partial TSR domains. In vitro, papilin non-competitively inhibits procollagen N-proteinase, an ADAMTS metalloproteinase.

Immunogen

Purified recombinant fragment of human PAPLN (AA: 766-870) expressed in E. Coli.

Formulation

Purified antibody in PBS with 0.05% sodium azide

PAPLN Antibody - Additional Information

Gene ID 89932

Other Names

Papilin, PAPLN

Dilution

E~~1/10000

WB~~1/500 - 1/2000

Storage

Maintain refrigerated at 2-8°C for up to 6 months. For long term storage store at -20°C in small aliquots to prevent freeze-thaw cycles.

Precautions

PAPLN Antibody is for research use only and not for use in diagnostic or therapeutic procedures.

PAPLN Antibody - Protein Information

Name PAPLN

Cellular Location
Secreted.

PAPLN Antibody - Protocols

Provided below are standard protocols that you may find useful for product applications.

- [Western Blot](#)
- [Blocking Peptides](#)
- [Dot Blot](#)
- [Immunohistochemistry](#)
- [Immunofluorescence](#)
- [Immunoprecipitation](#)
- [Flow Cytometry](#)
- [Cell Culture](#)

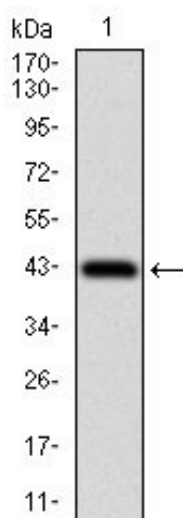
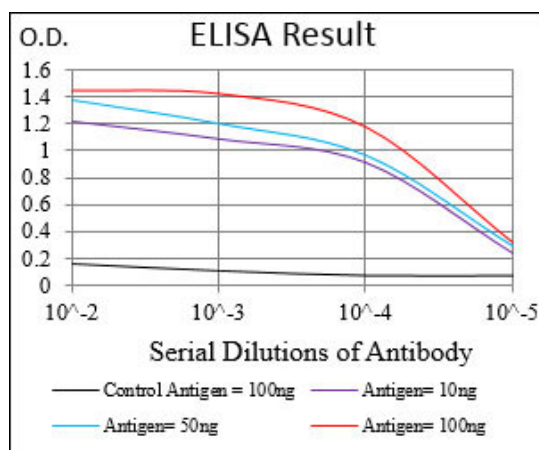


Figure 1: Western blot analysis using PAPLN mAb against human PAPLN recombinant protein. (Expected MW is 36.4 kDa)

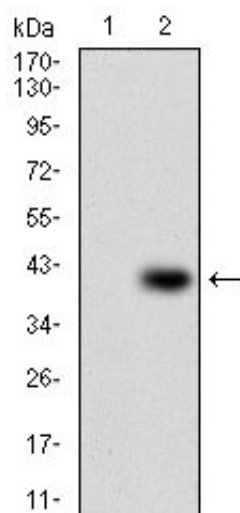


Figure 2: Western blot analysis using PAPLN mAb against HEK293 (1) and PAPLN (AA: 766-870)-hlgGFc transfected HEK293 (2) cell lysate.

PAPLN Antibody - Background

Papilin is an extracellular matrix glycoprotein involved in, thin matrix layers during gastrulation, matrix associated with wandering, phagocytic hemocytes, basement membranes and space-filling matrix during *Drosophila* development. Determination of its cDNA sequence led to the identification of *Caenorhabditis* and mammalian papilins. A distinctly conserved 'papilin cassette' of domains at the amino-end of papilins is also the carboxyl-end of the ADAMTS subgroup of secreted, matrix-associated metalloproteinases; this cassette contains one thrombospondin type 1 (TSR) domain, a specific cysteine-rich domain and several partial TSR domains. In vitro, papilin non-competitively inhibits procollagen N-proteinase, an ADAMTS metalloproteinase. ; ;

PAPLN Antibody - References

1. Int J Biochem Cell Biol. 2004 Jun; 36(6):1079-84.
2. Development. 2000 Dec;127(24):5475-85.