

CD14 Antibody
Purified Mouse Monoclonal Antibody
Catalog # AO1891a**Specification****CD14 Antibody - Product Information**

Application	WB, IHC, FC, E
Primary Accession	P08571
Reactivity	Human, Mouse
Host	Mouse
Clonality	Monoclonal
Isotype	IgG1
Calculated MW	40kDa KDa

Description

The protein encoded by this gene is a surface antigen that is preferentially expressed on monocytes/macrophages. It cooperates with other proteins to mediate the innate immune response to bacterial lipopolysaccharide. Alternative splicing results in multiple transcript variants encoding the same protein.

Immunogen

Purified recombinant fragment of human CD14 (AA: 20-214) expressed in E. Coli.

Formulation

Purified antibody in PBS with 0.05% sodium azide

CD14 Antibody - Additional Information**Gene ID 929****Other Names**

Monocyte differentiation antigen CD14, Myeloid cell-specific leucine-rich glycoprotein, CD14, Monocyte differentiation antigen CD14, urinary form, Monocyte differentiation antigen CD14, membrane-bound form, CD14

Dilution

WB~~1/500 - 1/2000
IHC~~1/200 - 1/1000
FC~~1/200 - 1/400
E~~1/10000

Storage

Maintain refrigerated at 2-8°C for up to 6 months. For long term storage store at -20°C in small aliquots to prevent freeze-thaw cycles.

Precautions

CD14 Antibody is for research use only and not for use in diagnostic or therapeutic procedures.

CD14 Antibody - Protein Information

Name CD14**Function**

Coreceptor for bacterial lipopolysaccharide (PubMed:1698311, PubMed:23264655). In concert with LBP, binds to monomeric lipopolysaccharide and delivers it to the LY96/TLR4 complex, thereby mediating the innate immune response to bacterial lipopolysaccharide (LPS) (PubMed:20133493, PubMed:22265692, PubMed:23264655). Acts via MyD88, TIRAP and TRAF6, leading to NF-kappa-B activation, cytokine secretion and the inflammatory response (PubMed:8612135). Acts as a coreceptor for TLR2:TLR6 heterodimer in response to diacylated lipopeptides and for TLR2:TLR1 heterodimer in response to triacylated lipopeptides, these clusters trigger signaling from the cell surface and subsequently are targeted to the Golgi in a lipid-raft dependent pathway (PubMed:16880211). Binds electronegative LDL (LDL(-)) and mediates the cytokine release induced by LDL(-) (PubMed:23880187).

Cellular Location

Cell membrane; Lipid-anchor, GPI-anchor. Secreted. Membrane raft. Golgi apparatus.
Note=Secreted forms may arise by cleavage of the GPI anchor.

Tissue Location

Detected on macrophages (at protein level) (PubMed:1698311). Expressed strongly on the surface of monocytes and weakly on the surface of granulocytes; also expressed by most tissue macrophages.

CD14 Antibody - Protocols

Provided below are standard protocols that you may find useful for product applications.

- [Western Blot](#)
- [Blocking Peptides](#)
- [Dot Blot](#)
- [Immunohistochemistry](#)
- [Immunofluorescence](#)
- [Immunoprecipitation](#)
- [Flow Cytometry](#)
- [Cell Culture](#)

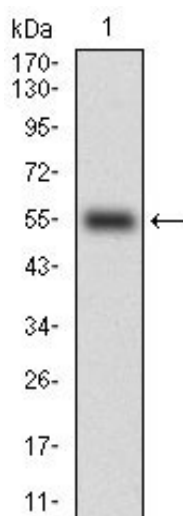
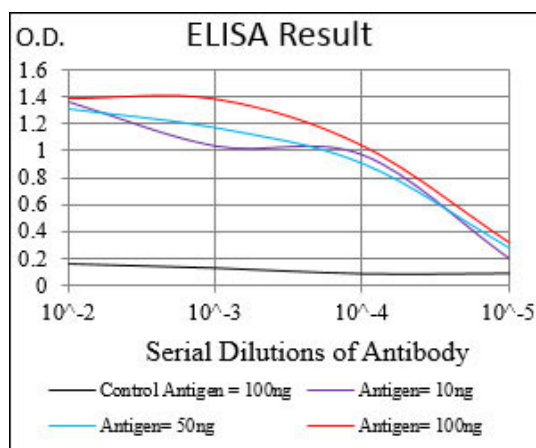


Figure 1: Western blot analysis using CD14 mAb against human CD14 (AA: 20-214) recombinant protein. (Expected MW is 46.8 kDa)

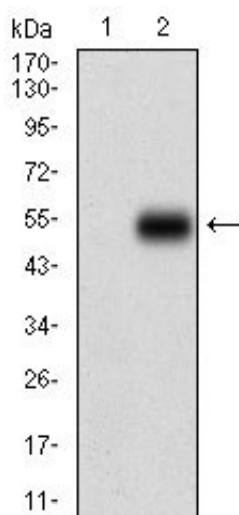


Figure 2: Western blot analysis using CD14 mAb against HEK293 (1) and CD14 (AA: 20-214)-hIgGFc transfected HEK293 (2) cell lysate.

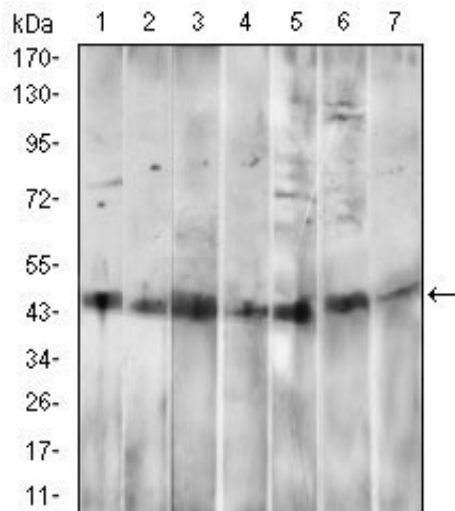


Figure 3: Western blot analysis using CD14 mouse mAb against HepG2 (1), A549 (2), HL60 (3), RAW264.7 (4), Hela (5), HEK293 (6) and NIH/3T3 (7) cell lysate.

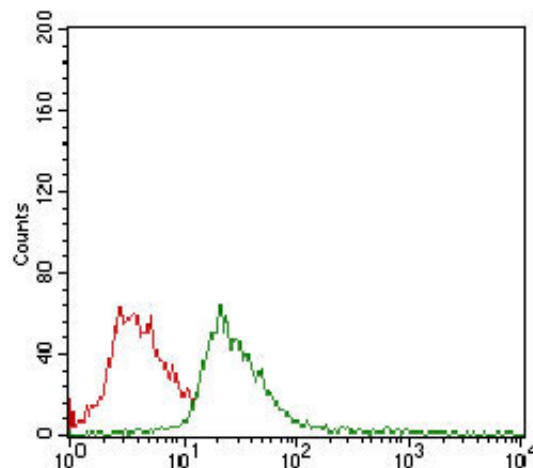


Figure 4: Flow cytometric analysis of Jurkat cells using CD14 mouse mAb (green) and negative control (red).

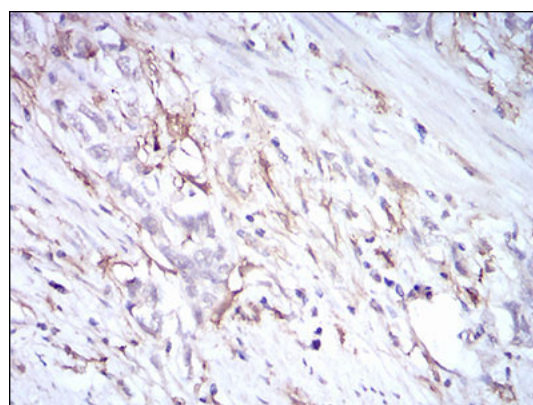


Figure 6: Immunohistochemical analysis of paraffin-embedded stomach cancer tissues using CD14 mouse mAb with DAB staining.

CD14 Antibody - Background

The protein encoded by this gene is the receptor for colony stimulating factor 1, a cytokine which controls the production, differentiation, and function of macrophages. This receptor mediates most if not all of the biological effects of this cytokine. Ligand binding activates the receptor kinase through

a process of oligomerization and transphosphorylation. The encoded protein is a tyrosine kinase transmembrane receptor and member of the CSF1/PDGF receptor family of tyrosine-protein kinases. Mutations in this gene have been associated with a predisposition to myeloid malignancy. The first intron of this gene contains a transcriptionally inactive ribosomal protein L7 processed pseudogene oriented in the opposite direction. ; ; ;

CD14 Antibody - References

1. J Immunol. 2012 Dec 15;189(12):5729-44.
2. Iran J Immunol. 2011 Jun;8(2):111-9.