

MSTN Antibody
Purified Mouse Monoclonal Antibody
Catalog # AO1925a**Specification****MSTN Antibody - Product Information**

Application	WB, IHC, FC, E
Primary Accession	O14793
Reactivity	Human
Host	Mouse
Clonality	Monoclonal
Isotype	IgG2b
Calculated MW	42.8kDa KDa

Description

The protein encoded by this gene is a member of the bone morphogenetic protein (BMP) family and the TGF-beta superfamily. This group of proteins is characterized by a polybasic proteolytic processing site which is cleaved to produce a mature protein containing seven conserved cysteine residues. The members of this family are regulators of cell growth and differentiation in both embryonic and adult tissues. This gene is thought to encode a secreted protein which negatively regulates skeletal muscle growth.

Immunogen

Purified recombinant fragment of human MSTN (AA:24-266) expressed in E. Coli.

Formulation

Purified antibody in PBS with 0.05% sodium azide.

MSTN Antibody - Additional Information

Gene ID 2660

Other Names

Growth/differentiation factor 8, GDF-8, Myostatin, MSTN, GDF8

Dilution

WB~~1/500 - 1/2000
IHC~~1/200 - 1/1000
FC~~1/200 - 1/400
E~~1/10000

Storage

Maintain refrigerated at 2-8°C for up to 6 months. For long term storage store at -20°C in small aliquots to prevent freeze-thaw cycles.

Precautions

MSTN Antibody is for research use only and not for use in diagnostic or therapeutic procedures.

MSTN Antibody - Protein Information

Name MSTN

Synonyms GDF8

Function

Acts specifically as a negative regulator of skeletal muscle growth.

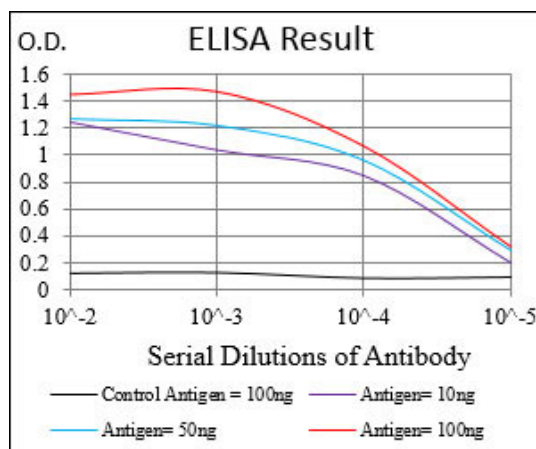
Cellular Location

Secreted {ECO:0000250|UniProtKB:O08689}.

MSTN Antibody - Protocols

Provided below are standard protocols that you may find useful for product applications.

- [Western Blot](#)
- [Blocking Peptides](#)
- [Dot Blot](#)
- [Immunohistochemistry](#)
- [Immunofluorescence](#)
- [Immunoprecipitation](#)
- [Flow Cytometry](#)
- [Cell Culture](#)



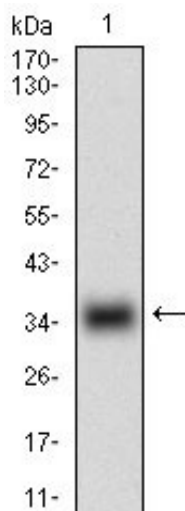


Figure 1: Western blot analysis using MSTN mAb against human MSTN (AA:24-266) recombinant protein. (Expected MW is 28.9 kDa)

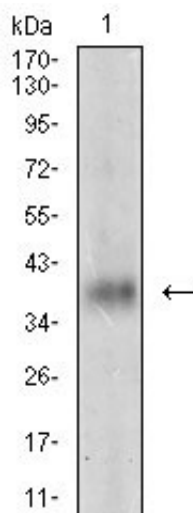


Figure 2: Western blot analysis using MSTN mouse mAb against LNCap cell lysate.

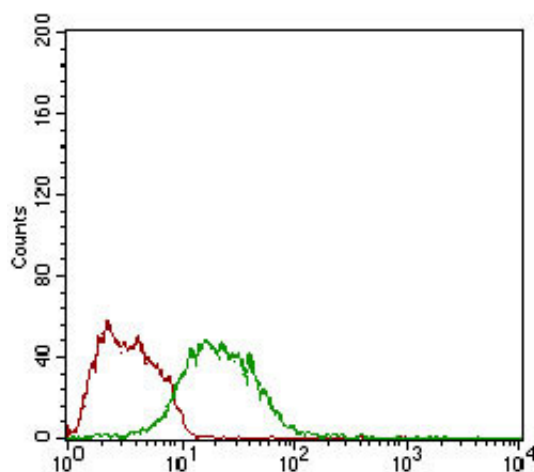


Figure 3: Flow cytometric analysis of LNCap cells using MSTN mouse mAb (green) and negative control (red).

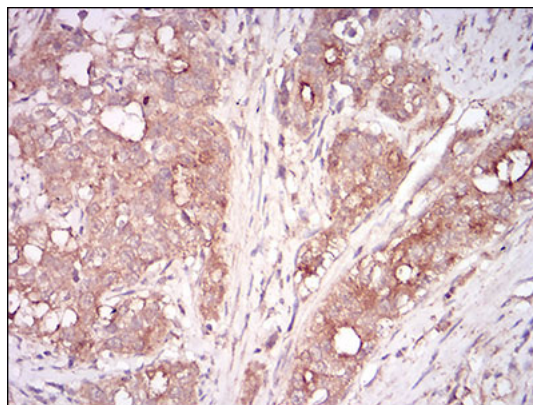


Figure 4: Immunohistochemical analysis of paraffin-embedded cervical cancer tissues using MSTN mouse mAb with DAB staining.

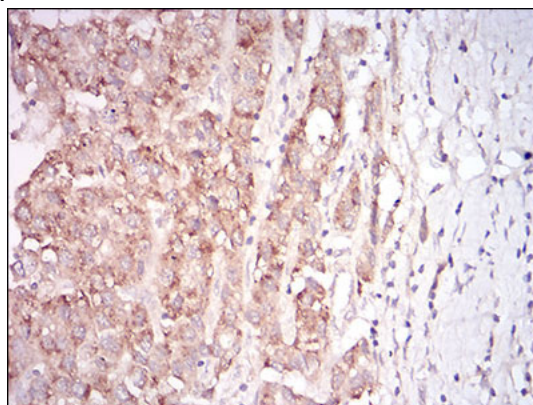


Figure 5: Immunohistochemical analysis of paraffin-embedded liver cancer tissues using MSTN mouse mAb with DAB staining.

MSTN Antibody - Background

This gene encodes a member of the NeuroD family of basic helix-loop-helix (bHLH) transcription factors. The protein forms heterodimers with other bHLH proteins and activates transcription of genes that contain a specific DNA sequence known as the E-box. It regulates expression of the insulin gene, and mutations in this gene result in type II diabetes mellitus. ; ; ;

MSTN Antibody - References

1. Eur J Endocrinol. 2012 Dec;167(6):873-80.
2. Biochem J. 2012 Aug 15;446(1):23-36.