

CNN1 Antibody
Purified Mouse Monoclonal Antibody
Catalog # AO1932a**Specification****CNN1 Antibody - Product Information**

Application	WB, IHC, E
Primary Accession	P51911
Reactivity	Human
Host	Mouse
Clonality	Monoclonal
Isotype	IgG1
Calculated MW	33.2kDa KDa

Description

Calponin h1 (CN) is a differentiation marker of smooth muscle cells that has been reported to be down-regulated in the blood vessels of several human tumors.

Immunogen

Purified recombinant fragment of human CNN1 (AA: 16-165) expressed in E. Coli.

Formulation

Purified antibody in PBS with 0.05% sodium azide.

CNN1 Antibody - Additional Information

Gene ID 1264

Other Names

Calponin-1, Basic calponin, Calponin H1, smooth muscle, CNN1

Dilution

WB~~1/500 - 1/2000

IHC~~1/200 - 1/1000

E~~1/10000

Storage

Maintain refrigerated at 2-8°C for up to 6 months. For long term storage store at -20°C in small aliquots to prevent freeze-thaw cycles.

Precautions

CNN1 Antibody is for research use only and not for use in diagnostic or therapeutic procedures.

CNN1 Antibody - Protein Information

Name CNN1

Function

Thin filament-associated protein that is implicated in the regulation and modulation of smooth muscle contraction. It is capable of binding to actin, calmodulin and tropomyosin. The interaction of calponin with actin inhibits the actomyosin Mg-ATPase activity (By similarity).

Tissue Location

Smooth muscle, and tissues containing significant amounts of smooth muscle

CNN1 Antibody - Protocols

Provided below are standard protocols that you may find useful for product applications.

- [Western Blot](#)
- [Blocking Peptides](#)
- [Dot Blot](#)
- [Immunohistochemistry](#)
- [Immunofluorescence](#)
- [Immunoprecipitation](#)
- [Flow Cytometry](#)
- [Cell Culture](#)

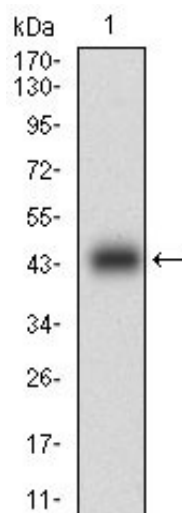
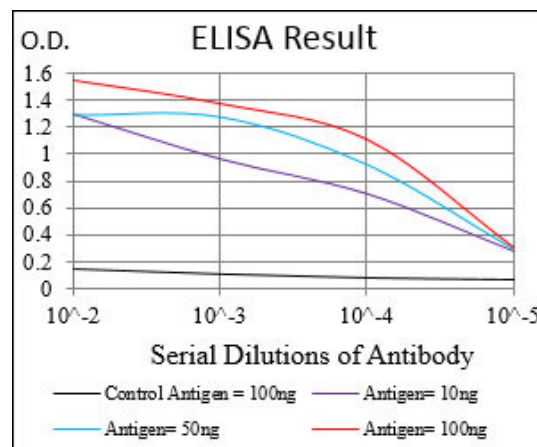


Figure 1: Western blot analysis using CNN1 mAb against human CNN1 (AA: 16-165) recombinant protein. (Expected MW is 43.1 kDa)

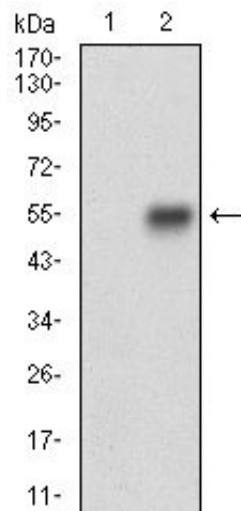


Figure 2: Western blot analysis using CNN1 mAb against HEK293 (1) and CNN1 (AA: 16-165)-hIgGFc transfected HEK293 (2) cell lysate.

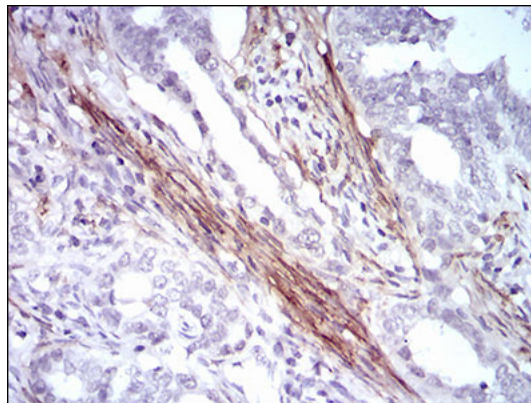


Figure 3: Immunohistochemical analysis of paraffin-embedded cervical cancer tissues using CNN1 mouse mAb with DAB staining.

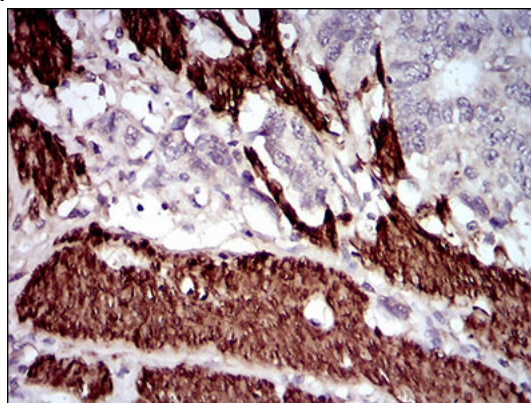


Figure 4: Immunohistochemical analysis of paraffin-embedded esophageal cancer tissues using CNN1 mouse mAb with DAB staining.

CNN1 Antibody - Background

Chromobox homolog 8 (CBX8), a Polycomb Group protein that interacts with MLL-AF9 and TIP60, plays an essential role in MLL-AF9 transcriptional regulation and leukemogenesis. CBX8, which is part of one of the PRC1 complexes, regulates proliferation of diploid human and mouse fibroblasts through direct binding to the INK4A-ARF locus. ; ;

CNN1 Antibody - References

1. Anticancer Res. 2010 Apr;30(4):1071-8.2. Eur J Surg Oncol. 2008 May;34(5):531-7.