

TUBE1 Antibody
Purified Mouse Monoclonal Antibody
Catalog # AO1940a**Specification****TUBE1 Antibody - Product Information**

| | |
|-------------------|------------------------|
| Application | E, WB, FC, IHC |
| Primary Accession | O9UJT0 |
| Reactivity | Human |
| Host | Mouse |
| Clonality | Monoclonal |
| Isotype | IgG1 |
| Calculated MW | 53kDa KDa |

Description

This gene encodes a member of the tubulin superfamily. This protein localizes to the centriolar sub-distal appendages that are associated with the older of the two centrioles after centrosome duplication. This protein plays a central role in organization of the microtubules during centriole duplication. A pseudogene of this gene is found on chromosome 5.

Immunogen

Purified recombinant fragment of human TUBE1 (AA: 314-472) expressed in E. Coli.

Formulation

Purified antibody in PBS with 0.05% sodium azide.

TUBE1 Antibody - Additional Information

Gene ID 51175

Other Names

Tubulin epsilon chain, Epsilon-tubulin, TUBE1, TUBE

Dilution

E~~1/10000
WB~~1/500 - 1/2000
FC~~1/200 - 1/400
IHC~~1/200 - 1/1000

Storage

Maintain refrigerated at 2-8°C for up to 6 months. For long term storage store at -20°C in small aliquots to prevent freeze-thaw cycles.

Precautions

TUBE1 Antibody is for research use only and not for use in diagnostic or therapeutic procedures.

TUBE1 Antibody - Protein Information

Name TUBE1

Synonyms TUBE

Cellular Location

Cytoplasm, cytoskeleton, microtubule organizing center, centrosome. Note=Associated with pericentriolar material.

TUBE1 Antibody - Protocols

Provided below are standard protocols that you may find useful for product applications.

- [Western Blot](#)
- [Blocking Peptides](#)
- [Dot Blot](#)
- [Immunohistochemistry](#)
- [Immunofluorescence](#)
- [Immunoprecipitation](#)
- [Flow Cytometry](#)
- [Cell Culture](#)

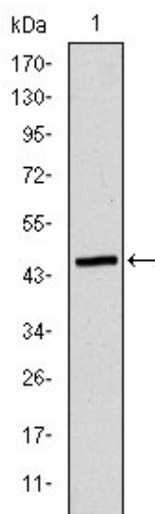
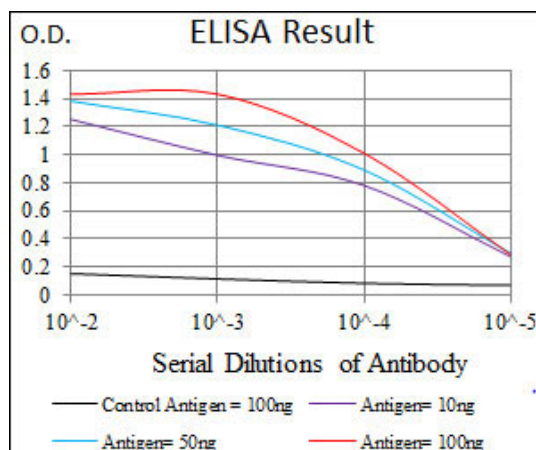


Figure 1: Western blot analysis using TUBE1 mAb against human TUBE1 (AA: 314-472) recombinant protein. (Expected MW is 44.3 kDa)

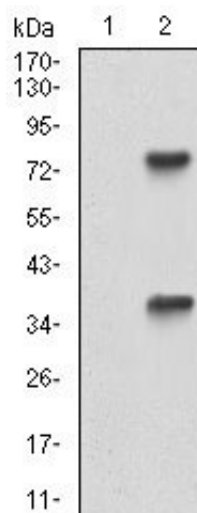


Figure 2: Western blot analysis using TUBE1 mAb against HEK293 (1) and TUBE1 (AA: 314-472)-hlgGfc transfected HEK293 (2) cell lysate.

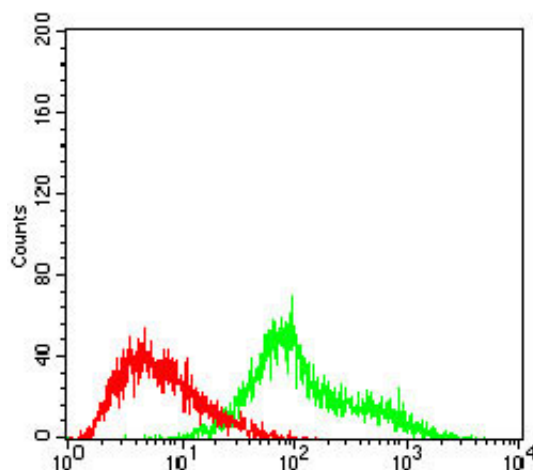


Figure 3: Flow cytometric analysis of Hela cells using TUBE1 mouse mAb (green) and negative control (red).

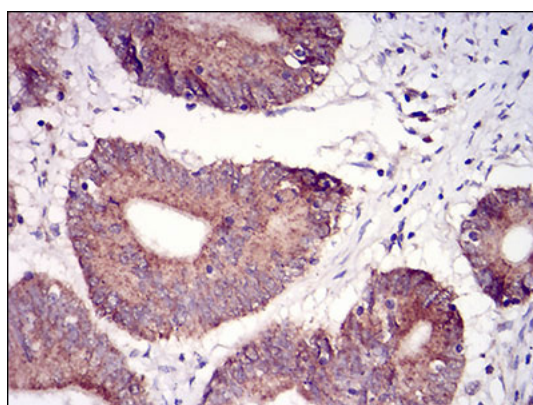


Figure 4: Immunohistochemical analysis of paraffin-embedded colon cancer tissues using TUBE1 mouse mAb with DAB staining.

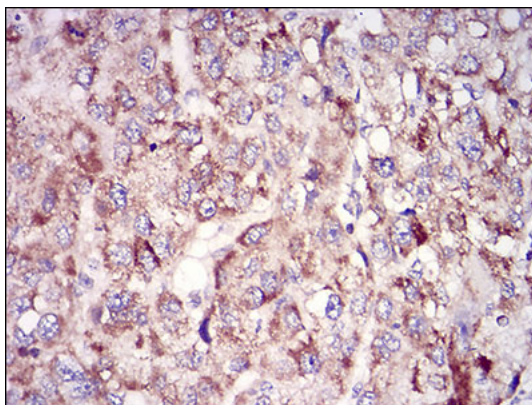


Figure 5: Immunohistochemical analysis of paraffin-embedded liver cancer tissues using TUBE1 mouse mAb with DAB staining.

TUBE1 Antibody - Background

The innate immune system confers host defense against viral and microbial infection, and TRAFD1 is a negative feedback regulator that controls excessive immune responses ; ;

TUBE1 Antibody - References

1. Nat Cell Biol. 2003 Jan;5(1):71-6.2. Nat Cell Biol. 2000 Jan;2(1):30-5.