

RHOF Antibody
Purified Mouse Monoclonal Antibody
Catalog # AO1955a**Specification****RHOF Antibody - Product Information**

Application	WB, FC, E
Primary Accession	Q9HBH0
Reactivity	Human
Host	Mouse
Clonality	Monoclonal
Isotype	IgG2a
Calculated MW	23.6kDa KDa

Description

RHOF is a protein-coding gene. Diseases associated with RHOF include mycosis fungoides, and lung cancer, and among its related super-pathways are Signaling by Rho GTPases and Signaling by GPCR. GO annotations related to this gene include GTP binding and GTPase activity. An important paralog of this gene is RHOB.

Immunogen

Purified recombinant fragment of human RHOF (AA: 1-84) expressed in E. Coli.

Formulation

Purified antibody in PBS with 0.05% sodium azide.

RHOF Antibody - Additional Information

Gene ID 54509

Other Names

Rho-related GTP-binding protein RhoF, Rho family GTPase Rif, Rho in filopodia, RHOF, ARHF, RIF

Dilution

WB~~1/500 - 1/2000

FC~~1/200 - 1/400

E~~1/10000

Storage

Maintain refrigerated at 2-8°C for up to 6 months. For long term storage store at -20°C in small aliquots to prevent freeze-thaw cycles.

Precautions

RHOF Antibody is for research use only and not for use in diagnostic or therapeutic procedures.

RHOF Antibody - Protein Information

Name RHOF

Synonyms ARHF, RIF**Function**

Plasma membrane-associated small GTPase which cycles between an active GTP-bound and an inactive GDP-bound state. Causes the formation of thin, actin-rich surface projections called filopodia. Functions cooperatively with CDC42 and Rac to generate additional structures, increasing the diversity of actin-based morphology.

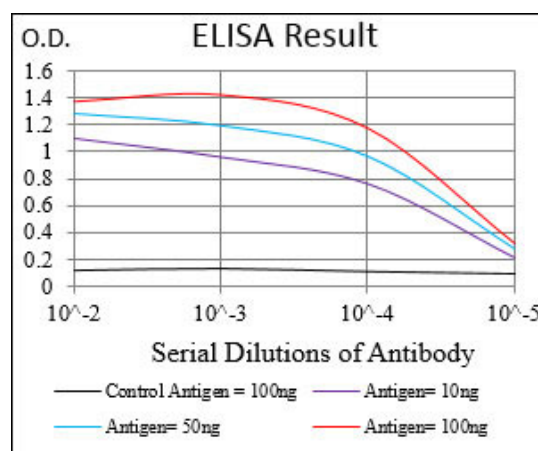
Cellular Location

Cell membrane; Lipid-anchor; Cytoplasmic side. Cytoplasm, cytoskeleton

RHOF Antibody - Protocols

Provided below are standard protocols that you may find useful for product applications.

- [Western Blot](#)
- [Blocking Peptides](#)
- [Dot Blot](#)
- [Immunohistochemistry](#)
- [Immunofluorescence](#)
- [Immunoprecipitation](#)
- [Flow Cytometry](#)
- [Cell Culture](#)



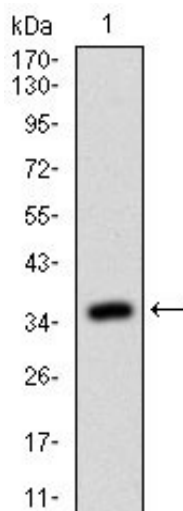


Figure 1: Western blot analysis using RHOA mAb against human RHOA (AA: 1-84) recombinant protein. (Expected MW is 34.9 kDa)

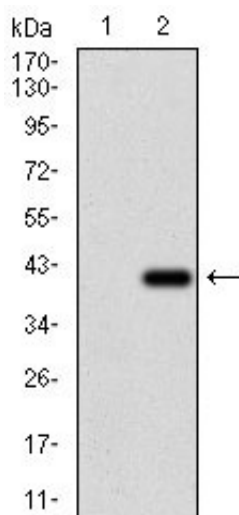


Figure 2: Western blot analysis using RHOA mAb against HEK293 (1) and RHOA (AA: 1-84)-hlgGfC transfected HEK293 (2) cell lysate.

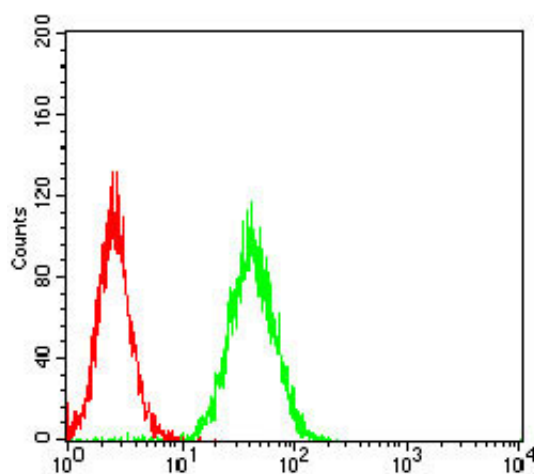


Figure 3: Flow cytometric analysis of HeLa cells using RHOA mouse mAb (green) and negative control (red).

RHOF Antibody - Background

Soluble guanylate cyclases are heterodimeric proteins that catalyze the conversion of GTP to 3',5'-cyclic GMP and pyrophosphate. The protein encoded by this gene is an alpha subunit of this complex and it interacts with a beta subunit to form the guanylate cyclase enzyme, which is activated by nitric oxide. Several transcript variants encoding a few different isoforms have been found for this gene. ; ;

RHOF Antibody - References

1. Curr Biol. 2000 Nov 2;10(21):1387-90.2. Biochem Soc Trans. 2012 Feb;40(1):268-72.