

SERPINA3 Antibody
Purified Mouse Monoclonal Antibody
Catalog # AO1978a**Specification****SERPINA3 Antibody - Product Information**

Application	WB, IHC, FC, E
Primary Accession	P01011
Reactivity	Human
Host	Mouse
Clonality	Monoclonal
Isotype	IgG1
Calculated MW	47.7kDa KDa

Description

The protein encoded by this gene is a plasma protease inhibitor and member of the serine protease inhibitor class. Polymorphisms in this protein appear to be tissue specific and influence protease targeting. Variations in this protein's sequence have been implicated in Alzheimer's disease, and deficiency of this protein has been associated with liver disease. Mutations have been identified in patients with Parkinson disease and chronic obstructive pulmonary disease.

Immunogen

Purified recombinant fragment of human SERPINA3 (AA: 279-432) expressed in E. Coli.

Formulation

Purified antibody in PBS with 0.05% sodium azide.

SERPINA3 Antibody - Additional Information**Gene ID 12****Other Names**

Alpha-1-antichymotrypsin, ACT, Cell growth-inhibiting gene 24/25 protein, Serpin A3, Alpha-1-antichymotrypsin His-Pro-less, SERPINA3, AACT

Dilution

WB~~1/500 - 1/2000
IHC~~1/200 - 1/1000
FC~~1/200 - 1/400
E~~1/10000

Storage

Maintain refrigerated at 2-8°C for up to 6 months. For long term storage store at -20°C in small aliquots to prevent freeze-thaw cycles.

Precautions

SERPINA3 Antibody is for research use only and not for use in diagnostic or therapeutic procedures.

SERPINA3 Antibody - Protein Information

Name SERPINA3

Synonyms AACT

Function

Although its physiological function is unclear, it can inhibit neutrophil cathepsin G and mast cell chymase, both of which can convert angiotensin-1 to the active angiotensin-2.

Cellular Location

Secreted.

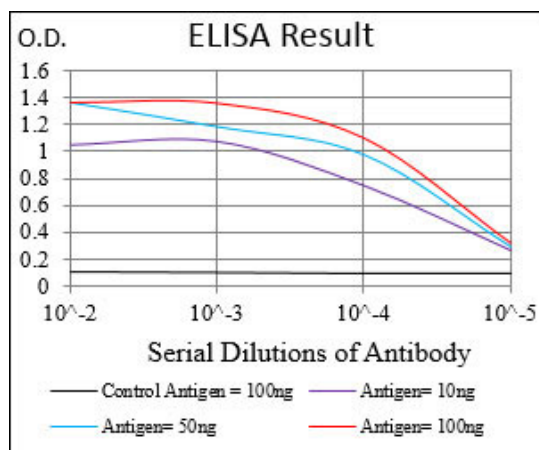
Tissue Location

Plasma. Synthesized in the liver. Like the related alpha-1-antitrypsin, its concentration increases in the acute phase of inflammation or infection. Found in the amyloid plaques from the hippocampus of Alzheimer disease brains.

SERPINA3 Antibody - Protocols

Provided below are standard protocols that you may find useful for product applications.

- [Western Blot](#)
- [Blocking Peptides](#)
- [Dot Blot](#)
- [Immunohistochemistry](#)
- [Immunofluorescence](#)
- [Immunoprecipitation](#)
- [Flow Cytometry](#)
- [Cell Culture](#)



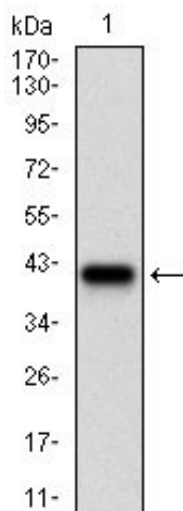


Figure 1: Western blot analysis using SERPINA3 mAb against human SERPINA3 (AA: 279-432) recombinant protein. (Expected MW is 42.3 kDa)

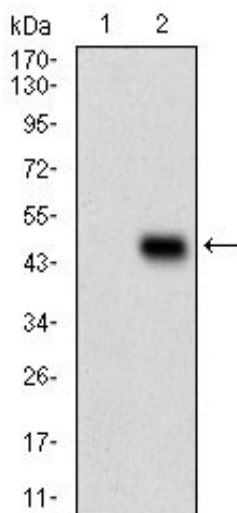


Figure 2: Western blot analysis using SERPINA3 mAb against HEK293 (1) and SERPINA3 (AA: 279-432)-hlgGFc transfected HEK293 (2) cell lysate.

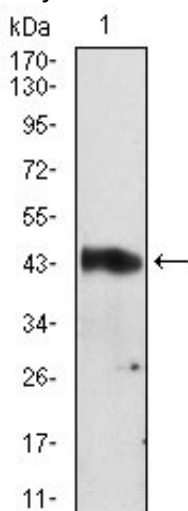


Figure 3: Western blot analysis using SERPINA3 mouse mAb against A549 cell lysate.

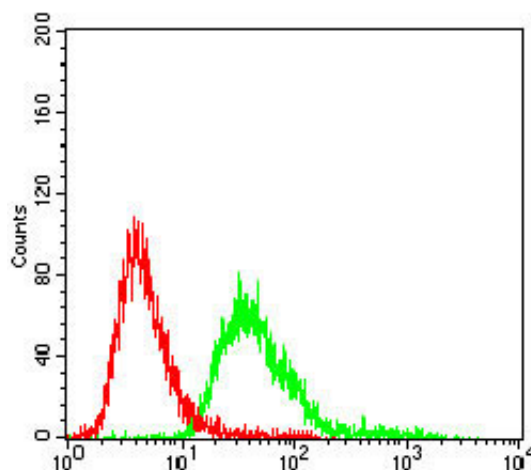


Figure 4: Flow cytometric analysis of A549 cells using SERPINA3 mouse mAb (green) and negative control (red).

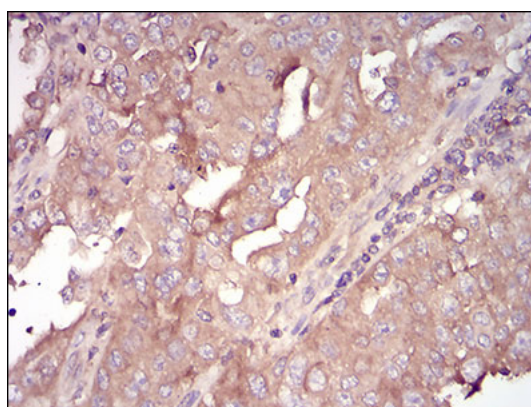


Figure 5: Immunohistochemical analysis of paraffin-embedded endometrial cancer tissues using SERPINA3 mouse mAb with DAB staining.

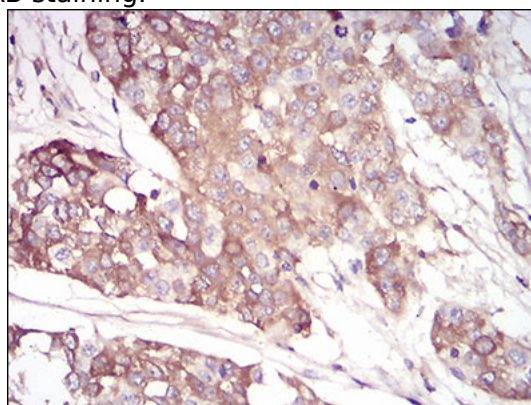


Figure 6: Immunohistochemical analysis of paraffin-embedded bladder cancer tissues using SERPINA3 mouse mAb with DAB staining.

SERPINA3 Antibody - Background

DNAL4 is a component of the dynein motor complex

SERPINA3 Antibody - References

1. Cerebrovasc Dis. 2010;29(1):68-72.
2. Cerebrovasc Dis. 2007;23(1):46-9.