

SLINGSHOT-1L Antibody
Purified Mouse Monoclonal Antibody
Catalog # AO2008a**Specification****SLINGSHOT-1L Antibody - Product Information**

Application	E, FC, IHC
Primary Accession	Q8WYL5
Reactivity	Human
Host	Mouse
Clonality	Monoclonal
Isotype	IgG1
Calculated MW	115.5kDa KDa

Description

The protein encoded by this gene belongs to the slingshot homolog (SSH) family of phosphatases, which regulate actin filament dynamics. The SSH proteins dephosphorylate and activate the actin binding/depolymerizing factor cofilin, which subsequently binds to actin filaments and stimulates their disassembly. Cofilin is inactivated by kinases such as LIM domain kinase-1 (LIMK1), which may also be dephosphorylated and inactivated by SSH proteins. The SSH family thus appears to play a role in actin dynamics by reactivating cofilin proteins. Alternatively spliced transcript variants encoding different isoforms have been described for this gene.

Immunogen

Synthesized peptide fragment of human SLINGSHOT-1L (AA: 1032-1044) expressed in E. Coli.

Formulation

Purified antibody in PBS with 0.05% sodium azide

SLINGSHOT-1L Antibody - Additional Information

Gene ID 54434

Other Names

Protein phosphatase Slingshot homolog 1, 3.1.3.16, 3.1.3.48, SSH-like protein 1, SSH-1L, hSSH-1L, SSH1, KIAA1298, SSH1L

Dilution

E~~1/10000

FC~~1/200 - 1/400

IHC~~1/500 - 1/2000

Storage

Maintain refrigerated at 2-8°C for up to 6 months. For long term storage store at -20°C in small aliquots to prevent freeze-thaw cycles.

Precautions

SLINGSHOT-1L Antibody is for research use only and not for use in diagnostic or therapeutic procedures.

SLINGSHOT-1L Antibody - Protein Information

Name SSH1 ([HGNC:30579](#))

Synonyms KIAA1298, SSH1L

Function

Protein phosphatase which regulates actin filament dynamics. Dephosphorylates and activates the actin binding/depolymerizing factor cofilin, which subsequently binds to actin filaments and stimulates their disassembly. Inhibitory phosphorylation of cofilin is mediated by LIMK1, which may also be dephosphorylated and inactivated by this protein.

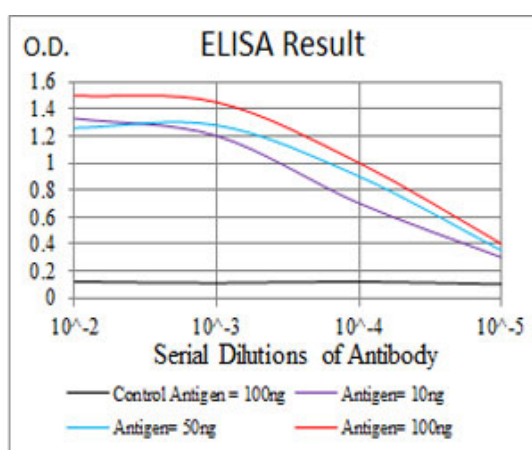
Cellular Location

Cytoplasm, cytoskeleton. Cell projection, lamellipodium. Cleavage furrow. Midbody. Note=Also recruited to actin rich membrane protrusions such as lamellipodia, which may allow local control of actin dynamics at sites of cell locomotion. Also localized to the cleavage furrow and the midbody during cytokinesis

SLINGSHOT-1L Antibody - Protocols

Provided below are standard protocols that you may find useful for product applications.

- [Western Blot](#)
- [Blocking Peptides](#)
- [Dot Blot](#)
- [Immunohistochemistry](#)
- [Immunofluorescence](#)
- [Immunoprecipitation](#)
- [Flow Cytometry](#)
- [Cell Culture](#)



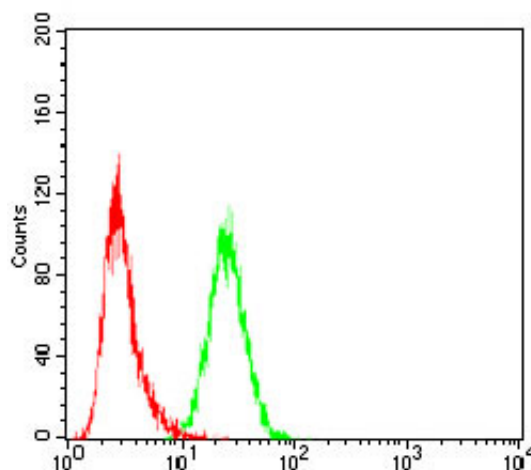


Figure 1: Flow cytometric analysis of HeLa cells using SLINGSHOT-1L mouse mAb (green) and negative control (red).

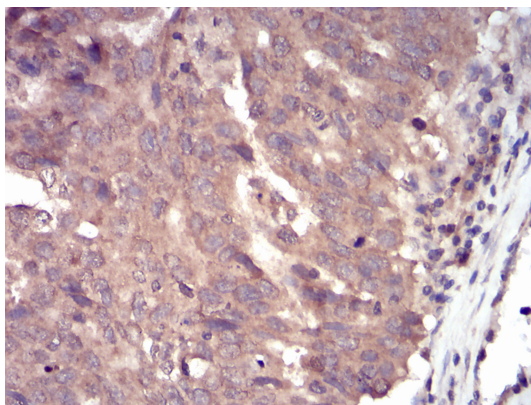


Figure 2: Immunohistochemical analysis of paraffin-embedded ovarian cancer tissues using SLINGSHOT-1L mouse mAb with DAB staining.

SLINGSHOT-1L Antibody - References

Molecules. 2012 Dec 17;17(12):14975-94. Nan Fang Yi Ke Da Xue Xue Bao. 2011 Jun;31(6):928-32.