

GUCY1A3 Antibody
Purified Mouse Monoclonal Antibody
Catalog # AO2286a**Specification****GUCY1A3 Antibody - Product Information**

Application	E, WB, IF, FC, IHC
Primary Accession	Q02108
Reactivity	Human
Host	Mouse
Clonality	Monoclonal
Isotype	IgG1
Calculated MW	77.5kDa KDa

Description

Soluble guanylate cyclases are heterodimeric proteins that catalyze the conversion of GTP to 3',5'-cyclic GMP and pyrophosphate. The protein encoded by this gene is an alpha subunit of this complex and it interacts with a beta subunit to form the guanylate cyclase enzyme, which is activated by nitric oxide. Several transcript variants encoding a few different isoforms have been found for this gene.

Immunogen

Purified recombinant fragment of human GUCY1A3 (AA: 22-214) expressed in E. Coli.

Formulation

Ascitic fluid containing 0.03% sodium azide.

GUCY1A3 Antibody - Additional Information

Gene ID 2982

Other Names

Guanylate cyclase soluble subunit alpha-3, GCS-alpha-3, 4.6.1.2, GCS-alpha-1, Soluble guanylate cyclase large subunit, GUCY1A3, GUC1A3, GUCSA3, GUCY1A1

Dilution

E~~1/10000
WB~~1/500 - 1/2000
IF~~1/200 - 1/1000
FC~~1/200 - 1/400
IHC~~1/200 - 1/1000

Storage

Maintain refrigerated at 2-8°C for up to 6 months. For long term storage store at -20°C in small aliquots to prevent freeze-thaw cycles.

Precautions

GUCY1A3 Antibody is for research use only and not for use in diagnostic or therapeutic procedures.

GU CY1A3 Antibody - Protein Information

Name GUCY1A1 ([HGNC:4685](#))

Cellular Location

Cytoplasm.

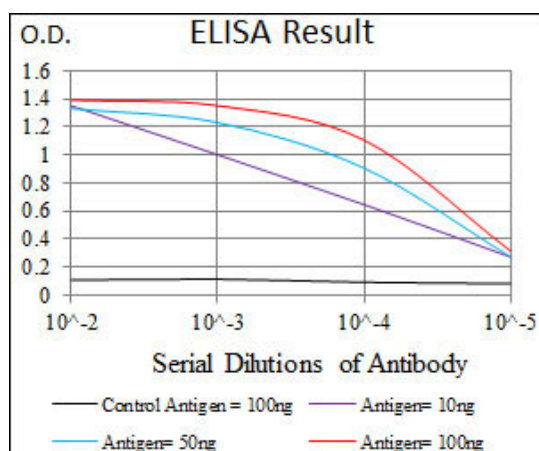
Tissue Location

Detected in brain cortex and lung (at protein level).

GU CY1A3 Antibody - Protocols

Provided below are standard protocols that you may find useful for product applications.

- [Western Blot](#)
- [Blocking Peptides](#)
- [Dot Blot](#)
- [Immunohistochemistry](#)
- [Immunofluorescence](#)
- [Immunoprecipitation](#)
- [Flow Cytometry](#)
- [Cell Culture](#)



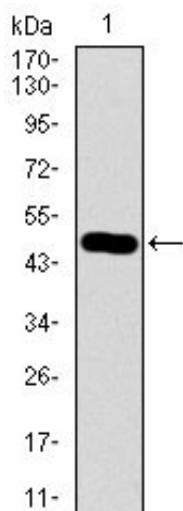


Figure 1: Western blot analysis using GUCY1A3 mAb against human GUCY1A3 recombinant protein. (Expected MW is 47.2 kDa)

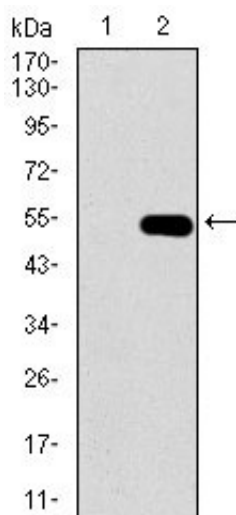


Figure 2: Western blot analysis using GUCY1A3 mAb against HEK293 (1) and GUCY1A3 (AA: 22-214)-hlgGfc transfected HEK293 (2) cell lysate.

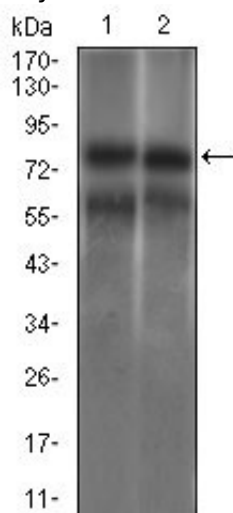


Figure 3: Western blot analysis using GUCY1A3 mouse mAb against HEK293 (1) and Jurkat (2) cell lysate.

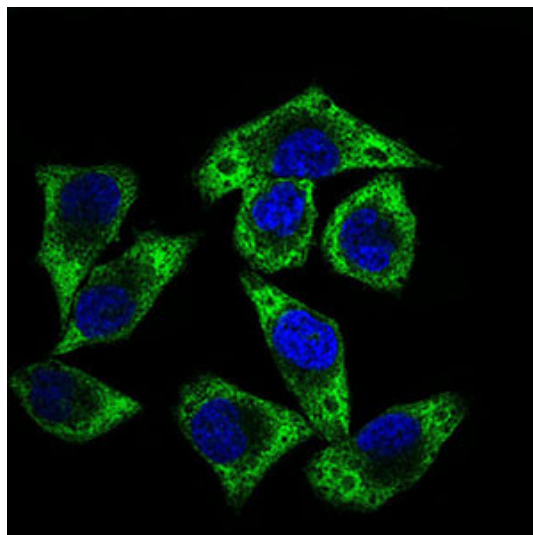


Figure 4: Immunofluorescence analysis of HepG2 cells using GUCY1A3 mouse mAb (green). Blue: DRAQ5 fluorescent DNA dye.

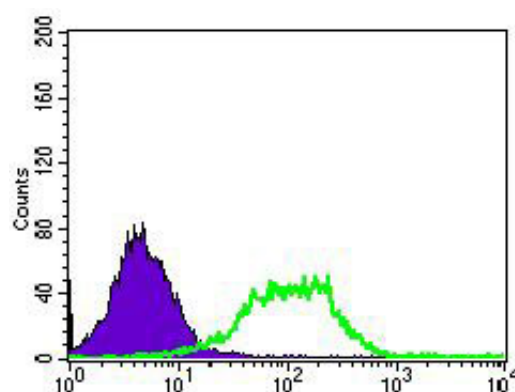


Figure 5: Flow cytometric analysis of HEK293 cells using GUCY1A3 mouse mAb (green) and negative control (purple).

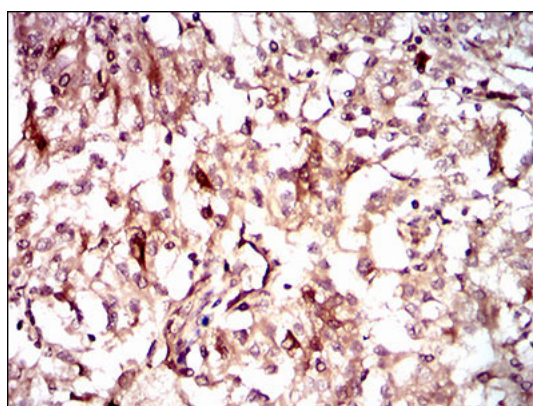


Figure 6: Immunohistochemical analysis of paraffin-embedded renal cancer tissues using GUCY1A3 mouse mAb with DAB staining.

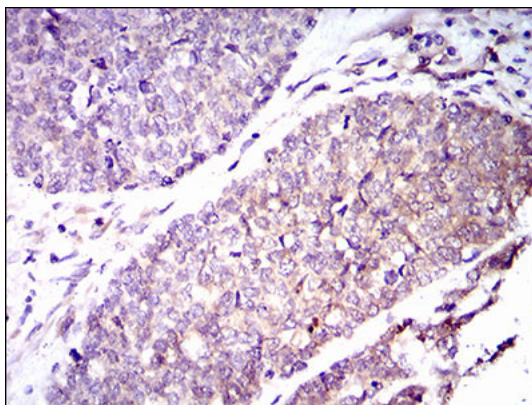


Figure 7: Immunohistochemical analysis of paraffin-embedded esophageal cancer tissues using GUCY1A3 mouse mAb with DAB staining.

GUCY1A3 Antibody - References

1. Mol Endocrinol. 2012 Feb;26(2):292-307. 2. J Biol Inorg Chem. 2011 Dec;16(8):1227-39.