

GUCY1A3 Antibody
Purified Mouse Monoclonal Antibody
Catalog # AO2287a**Specification****GUCY1A3 Antibody - Product Information**

Application	WB, IHC, FC, ICC, E
Primary Accession	Q02108
Reactivity	Human
Host	Mouse
Clonality	Monoclonal
Isotype	IgG1
Calculated MW	77.5kDa KDa

Description

Soluble guanylate cyclases are heterodimeric proteins that catalyze the conversion of GTP to 3',5'-cyclic GMP and pyrophosphate. The protein encoded by this gene is an alpha subunit of this complex and it interacts with a beta subunit to form the guanylate cyclase enzyme, which is activated by nitric oxide. Several transcript variants encoding a few different isoforms have been found for this gene.

Immunogen

Purified recombinant fragment of human GUCY1A3 (AA: 22-214) expressed in E. Coli.

Formulation

Purified antibody in PBS with 0.05% sodium azide

GUCY1A3 Antibody - Additional Information

Gene ID 2982

Other Names

Guanylate cyclase soluble subunit alpha-3, GCS-alpha-3, 4.6.1.2, GCS-alpha-1, Soluble guanylate cyclase large subunit, GUCY1A3, GUC1A3, GUCSA3, GUCY1A1

Dilution

WB~~1/500 - 1/2000
IHC~~1/200 - 1/1000
FC~~1/200 - 1/400
ICC~~N/A
E~~1/10000

Storage

Maintain refrigerated at 2-8°C for up to 6 months. For long term storage store at -20°C in small aliquots to prevent freeze-thaw cycles.

Precautions

GUCY1A3 Antibody is for research use only and not for use in diagnostic or therapeutic procedures.

GU CY1A3 Antibody - Protein Information

Name GUCY1A1 ([HGNC:4685](#))

Cellular Location

Cytoplasm.

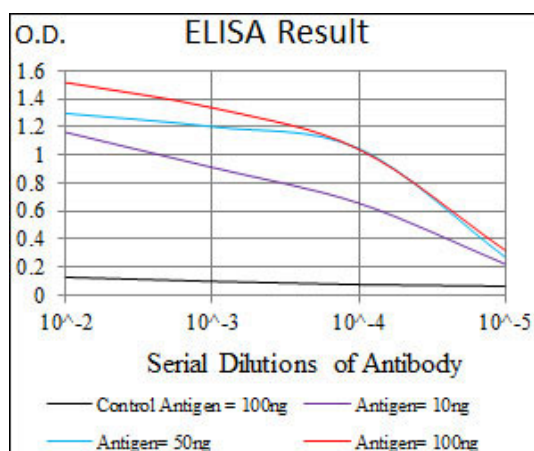
Tissue Location

Detected in brain cortex and lung (at protein level).

GU CY1A3 Antibody - Protocols

Provided below are standard protocols that you may find useful for product applications.

- [Western Blot](#)
- [Blocking Peptides](#)
- [Dot Blot](#)
- [Immunohistochemistry](#)
- [Immunofluorescence](#)
- [Immunoprecipitation](#)
- [Flow Cytometry](#)
- [Cell Culture](#)



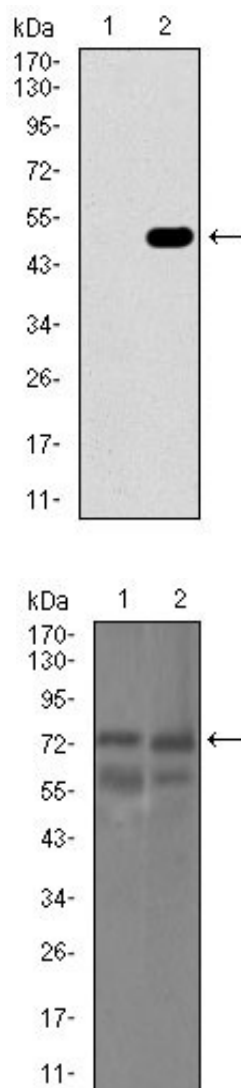


Figure 2: Western blot analysis using GUCY1A3 mAb against HEK293 (1) and GUCY1A3 (AA: 22-214)-hlgGfc transfected HEK293 (2) cell lysate.

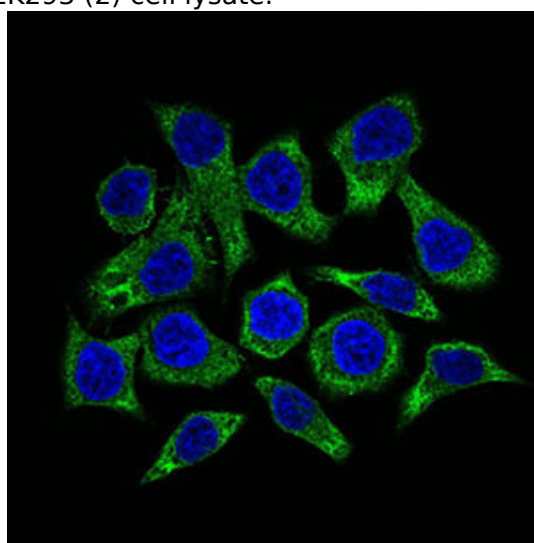


Figure 3: Western blot analysis using GUCY1A3 mouse mAb against HEK293 (1) and Raji (2) cell lysate.

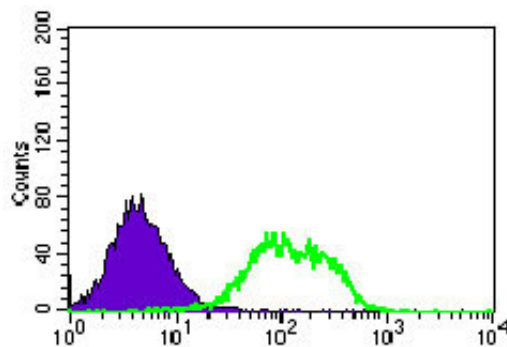


Figure 4: Immunofluorescence analysis of HepG2 cells using GUCY1A3 mouse mAb (green). Blue: DRAQ5 fluorescent DNA dye.

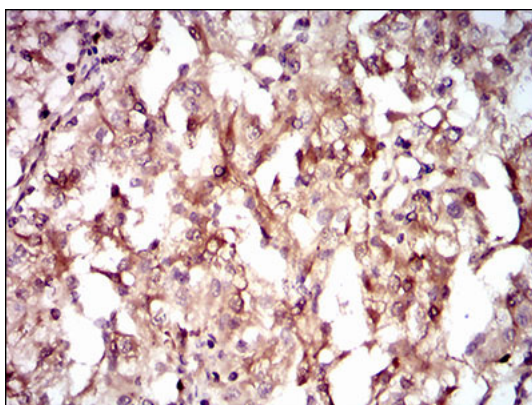


Figure 5: Flow cytometric analysis of HEK293 cells using GUCY1A3 mouse mAb (green) and negative control (purple).

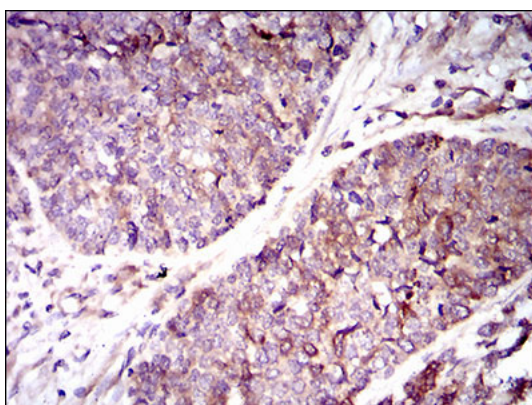


Figure 6: Immunohistochemical analysis of paraffin-embedded renal cancer tissues using GUCY1A3 mouse mAb with DAB staining.

GUCY1A3 Antibody - References

1. Mol Endocrinol. 2012 Feb;26(2):292-307. 2. J Biol Inorg Chem. 2011 Dec;16(8):1227-39.