

PIWIL4 Antibody
Purified Mouse Monoclonal Antibody
Catalog # AO2293a**Specification****PIWIL4 Antibody - Product Information**

Application	E, WB, FC, IHC
Primary Accession	Q7Z3Z4
Reactivity	Human
Host	Mouse
Clonality	Monoclonal
Isotype	IgG1
Calculated MW	96.6kDa KDa

Description

PIWIL4 belongs to the Argonaute family of proteins, which function in development and maintenance of germline stem cells

Immunogen

Purified recombinant fragment of human PIWIL4 (AA: 304-434) expressed in E. Coli.

Formulation

Purified antibody in PBS with 0.05% sodium azide

PIWIL4 Antibody - Additional Information

Gene ID 143689

Other Names

Piwi-like protein 4, PIWIL4, HIWI2, PIWI

Dilution

E~~1/10000
WB~~1/500 - 1/2000
FC~~1/200 - 1/400
IHC~~1/200 - 1/1000

Storage

Maintain refrigerated at 2-8°C for up to 6 months. For long term storage store at -20°C in small aliquots to prevent freeze-thaw cycles.

Precautions

PIWIL4 Antibody is for research use only and not for use in diagnostic or therapeutic procedures.

PIWIL4 Antibody - Protein Information

Name PIWIL4

Synonyms HIWI2, PIWI**Function**

Plays a central role during spermatogenesis by repressing transposable elements and preventing their mobilization, which is essential for the germline integrity (By similarity). Acts via the piRNA metabolic process, which mediates the repression of transposable elements during meiosis by forming complexes composed of piRNAs and Piwi proteins and governs the methylation and subsequent repression of transposons (By similarity). Directly binds piRNAs, a class of 24 to 30 nucleotide RNAs that are generated by a Dicer-independent mechanism and are primarily derived from transposons and other repeated sequence elements (By similarity). Associates with secondary piRNAs antisense and PIWIL2/MILI is required for such association (By similarity). The piRNA process acts upstream of known mediators of DNA methylation (By similarity). Does not show endonuclease activity (By similarity). Plays a key role in the piRNA amplification loop, also named ping-pong amplification cycle, by acting as a 'slicer-incompetent' component that loads cleaved piRNAs from the 'slicer-competent' component PIWIL2 and target them on genomic transposon loci in the nucleus (By similarity). May be involved in the chromatin-modifying pathway by inducing 'Lys-9' methylation of histone H3 at some loci (PubMed:17544373). In addition to its role in germline, PIWIL4 also plays a role in the regulation of somatic cells activities. Plays a role in pancreatic beta cell function and insulin secretion (By similarity). Involved in maintaining cell morphology and functional integrity of retinal epithelial through Akt/GSK3alpha/beta signaling pathway (PubMed:28025795). When overexpressed, acts as an oncogene by inhibition of apoptosis and promotion of cells proliferation in tumors (PubMed:22483988).

Cellular Location

Nucleus. Cytoplasm Note=Probable component of the meiotic nuage, also named P granule, a germ-cell-specific organelle required to repress transposon activity during meiosis. PIWIL2/MILI is required for nuclear localization (By similarity). {ECO:0000250|UniProtKB:Q8CGT6}

Tissue Location

Ubiquitously expressed (PubMed:25038252, PubMed:17544373, PubMed:28025795, PubMed:28711973, PubMed:22483988) Detected in retina, retinal pigment epithelia cells (RPE) (at protein level) (PubMed:28025795).

PIWIL4 Antibody - Protocols

Provided below are standard protocols that you may find useful for product applications.

- [Western Blot](#)
- [Blocking Peptides](#)
- [Dot Blot](#)
- [Immunohistochemistry](#)
- [Immunofluorescence](#)
- [Immunoprecipitation](#)
- [Flow Cytometry](#)
- [Cell Culture](#)

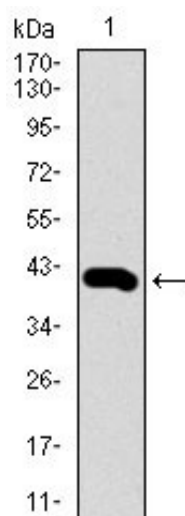
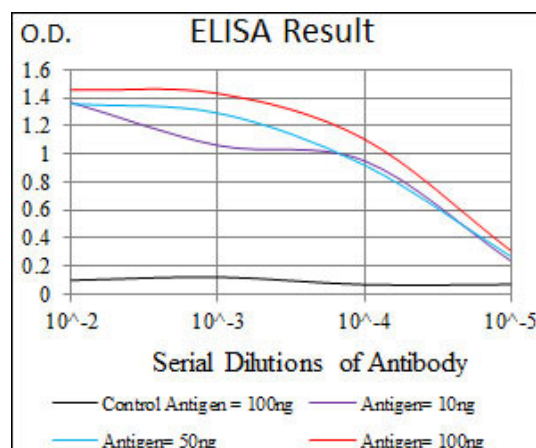


Figure 1: Western blot analysis using PIWIL4 mAb against human PIWIL4 recombinant protein. (Expected MW is 40.8 kDa)

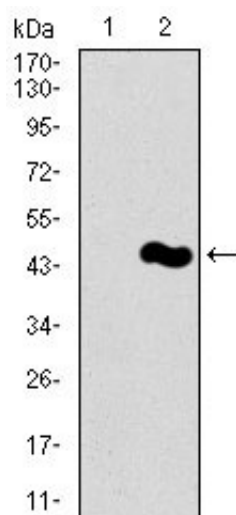


Figure 2: Western blot analysis using PIWIL4 mAb against HEK293 (1) and PIWIL4 (AA: 304-434)-hlgGfc transfected HEK293 (2) cell lysate.

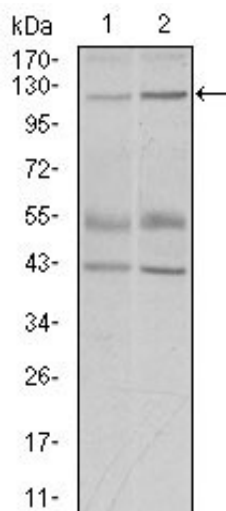


Figure 3: Western blot analysis using PIWIL4 mouse mAb against PC-3 (1) and PANC-1 (2) cell lysate.

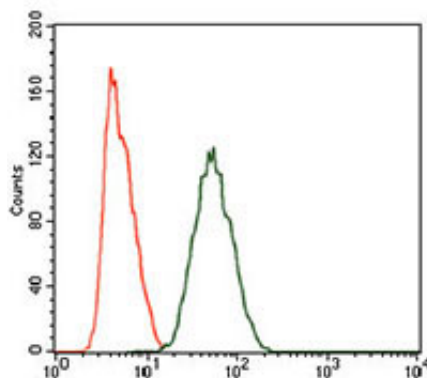


Figure 4: Flow cytometric analysis of HeLa cells using PIWIL4 mouse mAb (green) and negative control (purple).

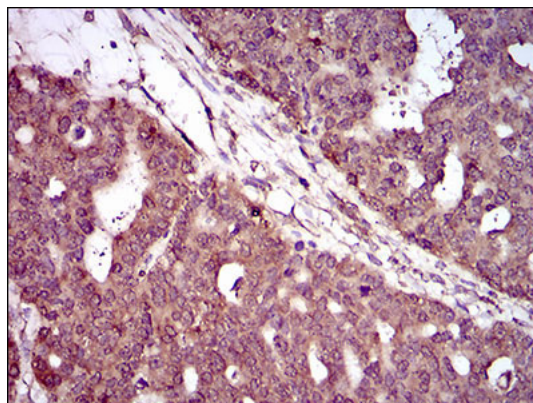


Figure 5: Immunohistochemical analysis of paraffin-embedded ovarian cancer tissues using PIWIL4 mouse mAb with DAB staining.

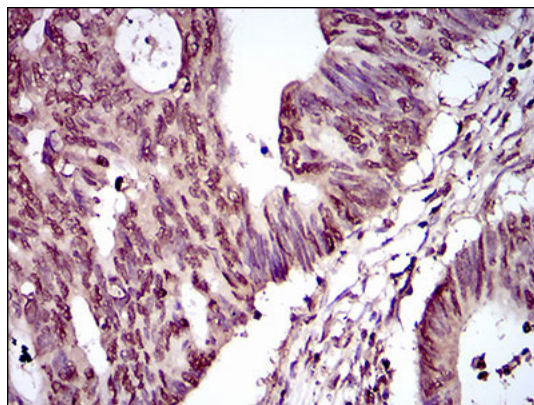


Figure 6: Immunohistochemical analysis of paraffin-embedded rectum cancer tissues using PIWIL4 mouse mAb with DAB staining.

PIWIL4 Antibody - References

1.FEBS Lett. 2012 May 7;586(9):1356-62. 2.Hum Reprod. 2010 Dec;25(12):2955-61.