

**ITGA2B Antibody**  
**Purified Mouse Monoclonal Antibody**  
**Catalog # AO2319a****Specification****ITGA2B Antibody - Product Information**

Application	WB, IHC, FC, E
Primary Accession	<a href="#">P08514</a>
Reactivity	Human
Host	Mouse
Clonality	Monoclonal
Isotype	IgG1
Calculated MW	113.4kDa KDa

**Description**

ITGA2B encodes integrin alpha chain 2b. Integrins are heterodimeric integral membrane proteins composed of an alpha chain and a beta chain. Alpha chain 2b undergoes post-translational cleavage to yield disulfide-linked light and heavy chains that join with beta 3 to form a fibronectin receptor expressed in platelets that plays a crucial role in coagulation. Mutations that interfere with this role result in thrombasthenia. In addition to adhesion, integrins are known to participate in cell-surface mediated signalling.

**Immunogen**

Purified recombinant fragment of human ITGA2B (AA: 45-149) expressed in E. Coli.

**Formulation**

Ascitic fluid containing 0.03% sodium azide.

**ITGA2B Antibody - Additional Information**

**Gene ID** 3674

**Other Names**

Integrin alpha-IIb, GPalpha IIb, GPIIb, Platelet membrane glycoprotein IIb, CD41, Integrin alpha-IIb heavy chain, Integrin alpha-IIb light chain, form 1, Integrin alpha-IIb light chain, form 2, ITGA2B, GP2B, ITGAB

**Dilution**

WB~~1/500 - 1/2000

IHC~~1/200 - 1/1000

FC~~1/200 - 1/400

E~~1/10000

**Storage**

Maintain refrigerated at 2-8°C for up to 6 months. For long term storage store at -20°C in small aliquots to prevent freeze-thaw cycles.

**Precautions**

ITGA2B Antibody is for research use only and not for use in diagnostic or therapeutic procedures.

## ITGA2B Antibody - Protein Information

**Name** ITGA2B

**Synonyms** GP2B, ITGAB

### Function

Integrin alpha-IIb/beta-3 is a receptor for fibronectin, fibrinogen, plasminogen, prothrombin, thrombospondin and vitronectin. It recognizes the sequence R-G-D in a wide array of ligands. It recognizes the sequence H-H-L-G-G-G-A-K-Q-A-G-D-V in fibrinogen gamma chain (By similarity). Following activation integrin alpha-IIb/beta-3 brings about platelet/platelet interaction through binding of soluble fibrinogen (PubMed:<a href="http://www.uniprot.org/citations/9111081" target="\_blank">9111081</a>). This step leads to rapid platelet aggregation which physically plugs ruptured endothelial cell surface (By similarity).

### Cellular Location

Membrane; Single-pass type I membrane protein.

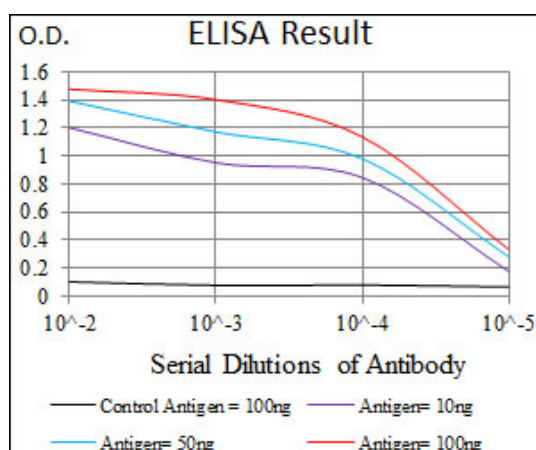
### Tissue Location

Isoform 1 and isoform 2 are expressed in platelets and megakaryocytes, but not in reticulocytes. Not detected in Jurkat, nor in U937 cell lines (PubMed:2351656). Isoform 3 is expressed in prostate adenocarcinoma, as well as in several erythroleukemia, prostate adenocarcinoma and melanoma cell lines, including PC-3, DU-145, HEL, WM983A, WM983B and WM35. Not detected in platelets, nor in normal prostate (at protein level) (PubMed:9809974)

## ITGA2B Antibody - Protocols

Provided below are standard protocols that you may find useful for product applications.

- [Western Blot](#)
- [Blocking Peptides](#)
- [Dot Blot](#)
- [Immunohistochemistry](#)
- [Immunofluorescence](#)
- [Immunoprecipitation](#)
- [Flow Cytometry](#)
- [Cell Culture](#)



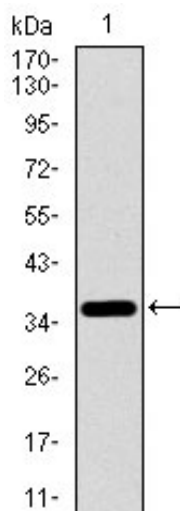


Figure 1: Western blot analysis using ITGA2B mAb against human ITGA2B recombinant protein. (Expected MW is 36.9 kDa)

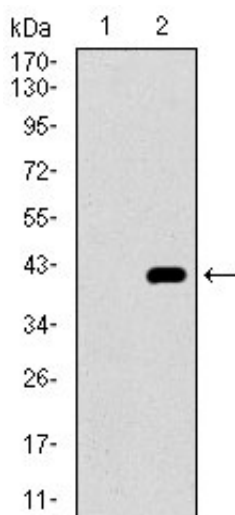


Figure 2: Western blot analysis using ITGA2B mAb against HEK293 (1) and ITGA2B (AA: 45-149)-hlgGfc transfected HEK293 (2) cell lysate.

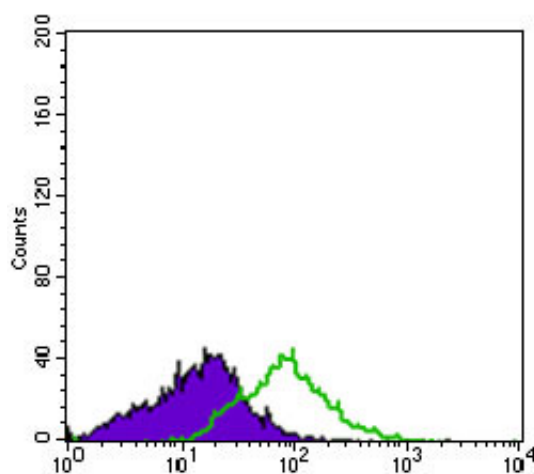


Figure 4: Flow cytometric analysis of HL60 cells using ITGA2B mouse mAb (green) and negative control (purple).

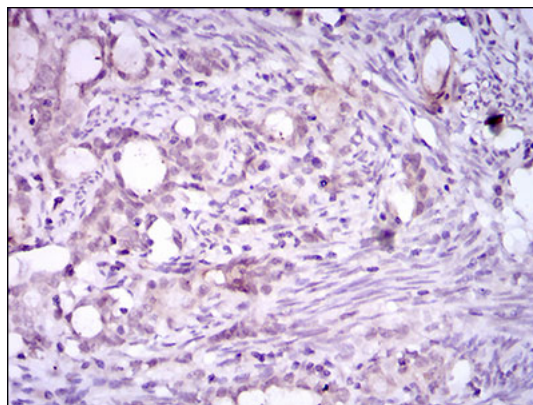


Figure 5: Immunohistochemical analysis of paraffin-embedded cervical cancer tissues using ITGA2B mouse mAb with DAB staining.

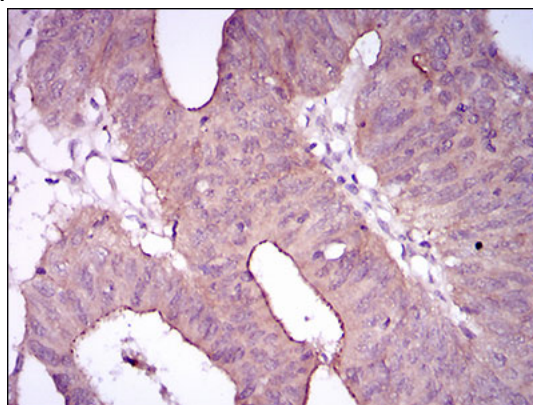


Figure 6: Immunohistochemical analysis of paraffin-embedded rectum cancer tissues using ITGA2B mouse mAb with DAB staining.

#### ITGA2B Antibody - References

1. Pediatr Blood Cancer. 2012 Aug;59(2):335-8.
2. Blood. 2011 Dec 1;118(23):5996-6005.