

Mouse Monoclonal Antibody to PLD2
Purified Mouse Monoclonal Antibody
Catalog # A02359a**Specification**

Mouse Monoclonal Antibody to PLD2 - Product Information

Application	WB, IHC, FC, ICC, E
Primary Accession	O14939
Reactivity	Human
Host	Mouse
Clonality	Monoclonal
Isotype	Mouse IgG1
Calculated MW	106kDa KDa

Description

The protein encoded by this gene catalyzes the hydrolysis of phosphatidylcholine to phosphatidic acid and choline. The activity of the encoded enzyme is enhanced by phosphatidylinositol 4,5-bisphosphate and ADP-ribosylation factor-1. This protein localizes to the peripheral membrane and may be involved in cytoskeletal organization, cell cycle control, transcriptional regulation, and/or regulated secretion. Two transcript variants encoding different isoforms have been found for this gene.

Immunogen

Purified recombinant fragment of human PLD2 (AA: 834-933) expressed in E. Coli.

Formulation

Purified antibody in PBS with 0.05% sodium azide

Application Note

ELISA: 1/10000; WB: 1/500 - 1/2000; IHC: 1/200 - 1/1000; ICC: 1/200 - 1/1000; FCM: 1/200 - 1/400

Mouse Monoclonal Antibody to PLD2 - Additional Information

Gene ID 5338

Dilution

WB~~1:1000
IHC~~1:100~500
FC~~1:10~50
ICC~~N/A
E~~N/A

Storage

Maintain refrigerated at 2-8°C for up to 6 months. For long term storage store at -20°C in small aliquots to prevent freeze-thaw cycles.

Precautions

Mouse Monoclonal Antibody to PLD2 is for research use only and not for use in diagnostic or therapeutic procedures.

Mouse Monoclonal Antibody to PLD2 - Protein Information

Name PLD2 ([HGNC:9068](#))

Function

Function as phospholipase selective for phosphatidylcholine (PubMed:9582313). May have a role in signal-induced cytoskeletal regulation and/or endocytosis (By similarity).

Cellular Location

Cell membrane {ECO:0000250|UniProtKB:P97813}; Lipid-anchor {ECO:0000250|UniProtKB:P97813}

Tissue Location

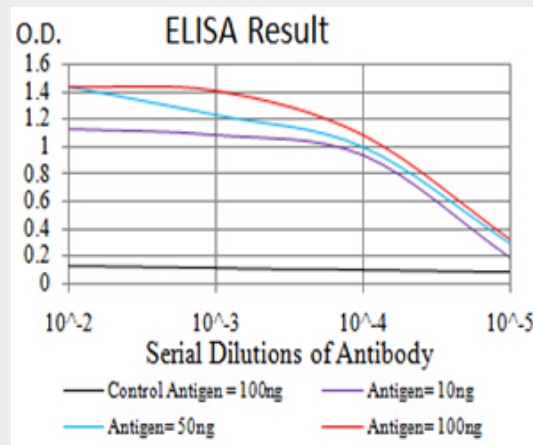
Ubiquitous..

Mouse Monoclonal Antibody to PLD2 - Protocols

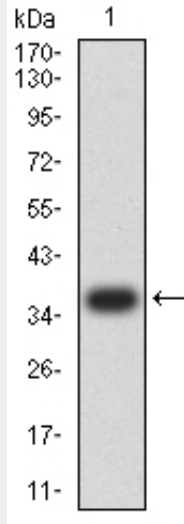
Provided below are standard protocols that you may find useful for product applications.

- [Western Blot](#)
- [Blocking Peptides](#)
- [Dot Blot](#)
- [Immunohistochemistry](#)
- [Immunofluorescence](#)
- [Immunoprecipitation](#)
- [Flow Cytometry](#)
- [Cell Culture](#)

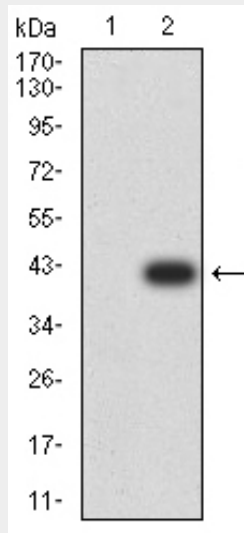
Mouse Monoclonal Antibody to PLD2 - Images



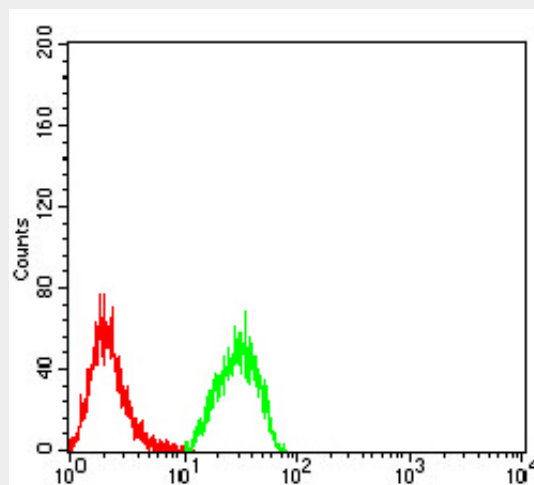
Black line: Control Antigen (100 ng);Purple line: Antigen (10ng); Blue line: Antigen (50 ng); Red line:Antigen (100 ng)



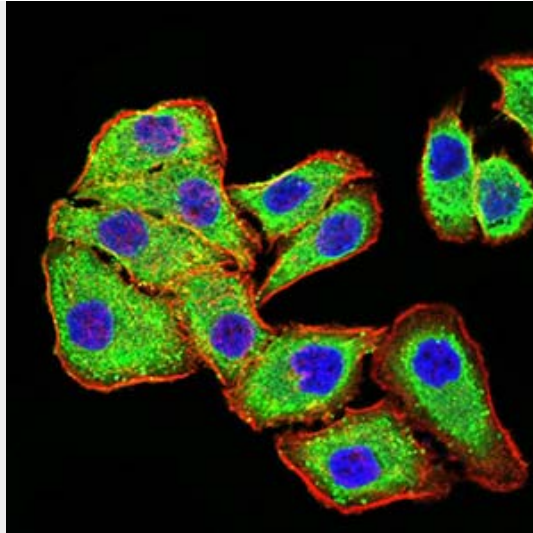
Western blot analysis using PLD2 mAb against human PLD2 (AA: 834-933) recombinant protein. (Expected MW is 37.4 kDa)



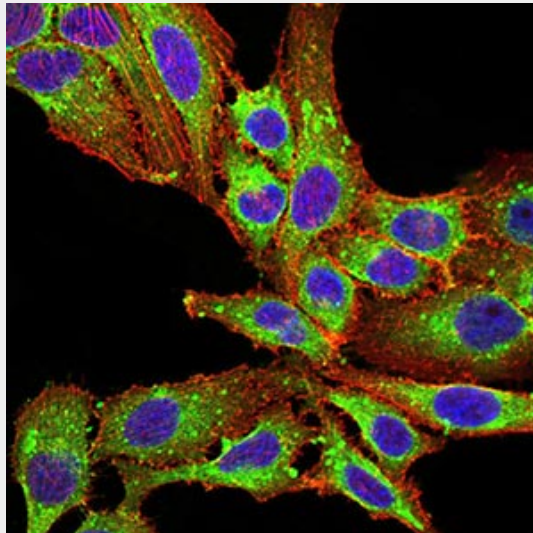
Western blot analysis using PLD2 mAb against HEK293 (1) and PLD2 (AA: 834-933)-hIgGFc transfected HEK293 (2) cell lysate.



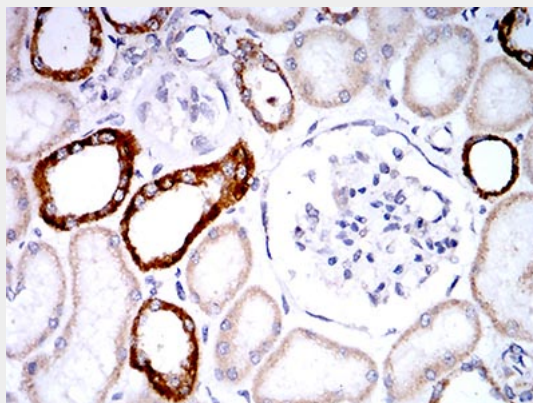
Flow cytometric analysis of HeLa cells using PLD2 mouse mAb (green) and negative control (red).



Immunofluorescence analysis of MCF-7 cells using PLD2 mouse mAb (green). Blue: DRAQ5 fluorescent DNA dye. Red: Actin filaments have been labeled with Alexa Fluor- 555 phalloidin. Secondary antibody from Fisher



Immunofluorescence analysis of SK-OV-3 cells using PLD2 mouse mAb (green). Blue: DRAQ5 fluorescent DNA dye. Red: Actin filaments have been labeled with Alexa Fluor- 555 phalloidin. Secondary antibody from Fisher



Immunohistochemical analysis of paraffin-embedded renal tissues using PLD2 mouse mAb with

DAB staining.

Mouse Monoclonal Antibody to PLD2 - References

1.Exp Mol Med. 2014 Dec 5;46:e124. ; 2.FEBS Lett. 2014 Aug 25;588(17):3251-8.;