

**Mouse Monoclonal Antibody to PLD2**  
**Purified Mouse Monoclonal Antibody**  
**Catalog # AO2360a****Specification**

---

**Mouse Monoclonal Antibody to PLD2 - Product Information**

Application	WB, FC, E
Primary Accession	<a href="#">O14939</a>
Reactivity	Human
Host	Mouse
Clonality	Monoclonal
Isotype	Mouse IgG1
Calculated MW	106kDa KDa

**Description**

The protein encoded by this gene catalyzes the hydrolysis of phosphatidylcholine to phosphatidic acid and choline. The activity of the encoded enzyme is enhanced by phosphatidylinositol 4,5-bisphosphate and ADP-ribosylation factor-1. This protein localizes to the peripheral membrane and may be involved in cytoskeletal organization, cell cycle control, transcriptional regulation, and/or regulated secretion. Two transcript variants encoding different isoforms have been found for this gene.;

**Immunogen**

Purified recombinant fragment of human PLD2 (AA: 834-933) expressed in E. Coli.

**Formulation**

Purified antibody in PBS with 0.05% sodium azide

**Application Note**

ELISA: 1/10000; WB: 1/500 - 1/2000; FCM: 1/200 - 1/400

**Mouse Monoclonal Antibody to PLD2 - Additional Information**

**Gene ID** 5338

**Dilution**

WB~~1:1000  
FC~~1:10~50  
E~~N/A

**Storage**

Maintain refrigerated at 2-8°C for up to 6 months. For long term storage store at -20°C in small aliquots to prevent freeze-thaw cycles.

**Precautions**

Mouse Monoclonal Antibody to PLD2 is for research use only and not for use in diagnostic or therapeutic procedures.

**Mouse Monoclonal Antibody to PLD2 - Protein Information**

Name PLD2 ([HGNC:9068](#))

### Function

Function as phospholipase selective for phosphatidylcholine (PubMed:<a href="http://www.uniprot.org/citations/9582313" target="\_blank">9582313</a>). May have a role in signal-induced cytoskeletal regulation and/or endocytosis (By similarity).

### Cellular Location

Cell membrane {ECO:0000250|UniProtKB:P97813}; Lipid-anchor {ECO:0000250|UniProtKB:P97813}

### Tissue Location

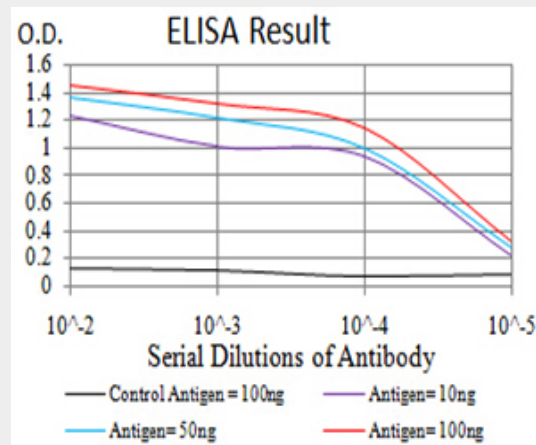
Ubiquitous..

## Mouse Monoclonal Antibody to PLD2 - Protocols

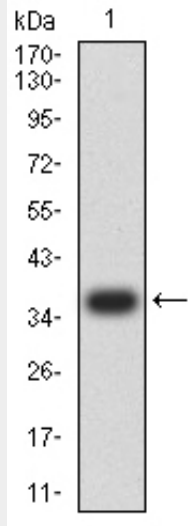
Provided below are standard protocols that you may find useful for product applications.

- [Western Blot](#)
- [Blocking Peptides](#)
- [Dot Blot](#)
- [Immunohistochemistry](#)
- [Immunofluorescence](#)
- [Immunoprecipitation](#)
- [Flow Cytometry](#)
- [Cell Culture](#)

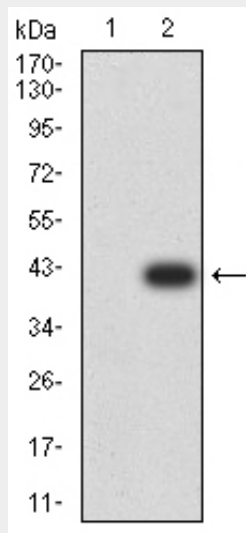
## Mouse Monoclonal Antibody to PLD2 - Images



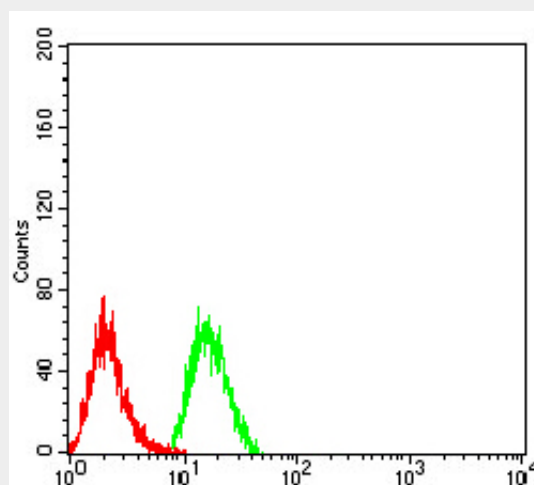
Black line: Control Antigen (100 ng);Purple line: Antigen (10ng); Blue line: Antigen (50 ng); Red line:Antigen (100 ng)



Western blot analysis using PLD2 mAb against human PLD2 (AA: 834-933) recombinant protein. (Expected MW is 37.4 kDa)



Western blot analysis using PLD2 mAb against HEK293 (1) and PLD2 (AA: 834-933)-hIgGFc transfected HEK293 (2) cell lysate.



Flow cytometric analysis of HeLa cells using PLD2 mouse mAb (green) and negative control (red).

**Mouse Monoclonal Antibody to PLD2 - References**

1. Exp Mol Med. 2014 Dec 5;46:e124. ; 2. FEBS Lett. 2014 Aug 25;588(17):3251-8.;