

Mouse Monoclonal Antibody to CD2
Purified Mouse Monoclonal Antibody
Catalog # AO2361a**Specification**

Mouse Monoclonal Antibody to CD2 - Product Information

Application	WB, IHC, FC, E
Primary Accession	P06729
Reactivity	Mouse
Host	Mouse
Clonality	Monoclonal
Isotype	Mouse IgG1
Calculated MW	39.4kDa KDa

Description

CD2 is a surface antigen of the human T-lymphocyte lineage that is expressed on all peripheral blood T cells (summarized by Sewell et al., 1986 [PubMed 3490670]). It is one of the earliest T-cell markers, being present on more than 95% of thymocytes; it is also found on some natural killer cells but not on B lymphocytes. Monoclonal antibodies directed against CD2 inhibit the formation of rosettes with sheep erythrocytes, indicating that CD2 is the erythrocyte receptor or is closely associated with it.;

Immunogen

Purified recombinant fragment of human CD2 (AA: 25-140) expressed in E. Coli.

Formulation

Purified antibody in PBS with 0.05% sodium azide

Application Note

ELISA: 1/10000; WB: 1/500 - 1/2000; IHC: 1/200 - 1/1000; FCM: 1/200 - 1/400

Mouse Monoclonal Antibody to CD2 - Additional Information

Gene ID 914

Other Names

T11; SRBC; LFA-2

Dilution

WB~~1:1000
IHC~~1:100~500
FC~~1:10~50
E~~N/A

Storage

Maintain refrigerated at 2-8°C for up to 6 months. For long term storage store at -20°C in small aliquots to prevent freeze-thaw cycles.

Precautions

Mouse Monoclonal Antibody to CD2 is for research use only and not for use in diagnostic or

therapeutic procedures.

Mouse Monoclonal Antibody to CD2 - Protein Information

Name CD2

Synonyms SRBC

Function

CD2 interacts with lymphocyte function-associated antigen CD58 (LFA-3) and CD48/BCM1 to mediate adhesion between T-cells and other cell types. CD2 is implicated in the triggering of T-cells, the cytoplasmic domain is implicated in the signaling function.

Cellular Location

Cell membrane; Single-pass type I membrane protein

Tissue Location

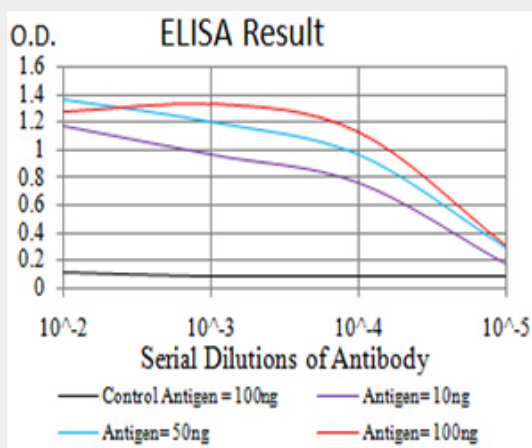
Expressed in natural killer cells (at protein level).

Mouse Monoclonal Antibody to CD2 - Protocols

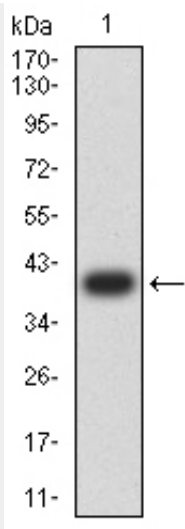
Provided below are standard protocols that you may find useful for product applications.

- [Western Blot](#)
- [Blocking Peptides](#)
- [Dot Blot](#)
- [Immunohistochemistry](#)
- [Immunofluorescence](#)
- [Immunoprecipitation](#)
- [Flow Cytometry](#)
- [Cell Culture](#)

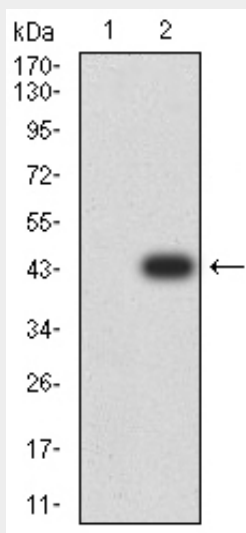
Mouse Monoclonal Antibody to CD2 - Images



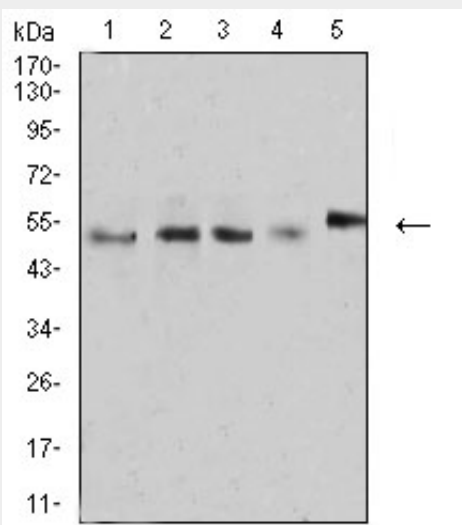
Black line: Control Antigen (100 ng); Purple line: Antigen (10ng); Blue line: Antigen (50 ng); Red line: Antigen (100 ng)



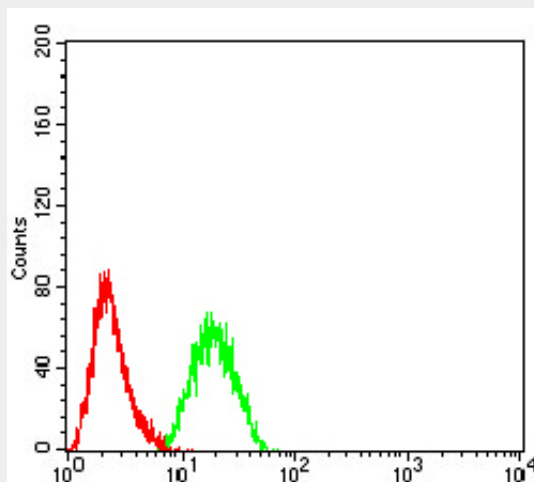
Western blot analysis using CD2 mAb against human CD2 (AA: 25-140) recombinant protein. (Expected MW is 39.2 kDa)



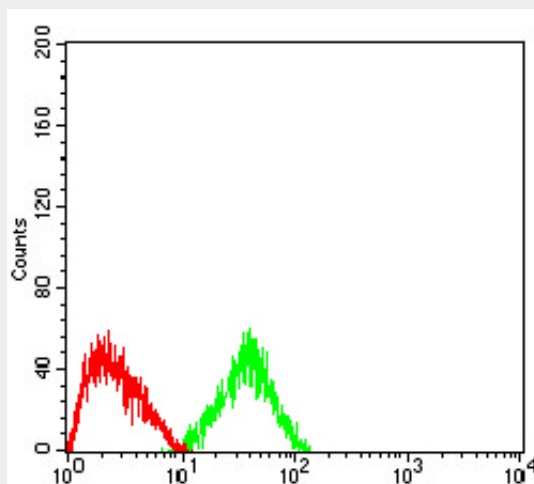
Western blot analysis using CD2 mAb against HEK293 (1) and CD2 (AA: 25-140)-hIgGFc transfected HEK293 (2) cell lysate.



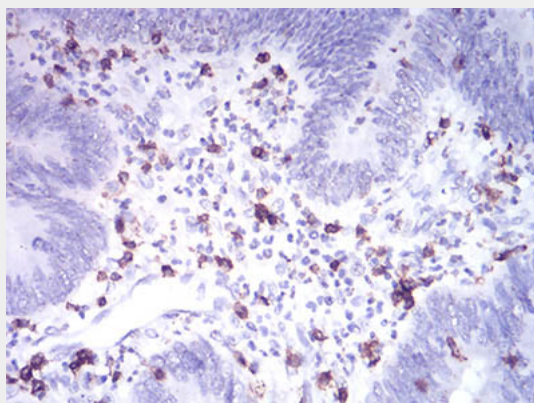
Western blot analysis using CD2 mouse mAb against MOLT4 (1), MCF-7 (2), L1210 (3), U937 (4), and NIH3T3 (5) cell lysate.



Flow cytometric analysis of Hela cells using CD2 mouse mAb (green) and negative control (red).



Flow cytometric analysis of HepG2 cells using CD2 mouse mAb (green) and negative control (red).



Immunohistochemical analysis of paraffin-embedded rectum cancer tissues using CD2 mouse mAb with DAB staining.

Mouse Monoclonal Antibody to CD2 - References

1. J Virol. 2013 Aug;87(16):9148-58. ; 2. PLoS One. 2012;7(10):e47664.;