

Mouse Monoclonal Antibody to DAPP1
Purified Mouse Monoclonal Antibody
Catalog # AO2369a**Specification**

Mouse Monoclonal Antibody to DAPP1 - Product Information

Application	WB, FC, E
Primary Accession	O9UN19
Reactivity	Human
Host	Mouse
Clonality	Monoclonal
Isotype	Mouse IgG1
Calculated MW	32.2kDa KDa

Description

DAPP1 (Dual Adaptor Of Phosphotyrosine And 3-Phosphoinositides) is a Protein Coding gene. Among its related pathways are Immune System and Downstream signaling events of B Cell Receptor (BCR). GO annotations related to this gene include phospholipid binding and phosphatidylinositol-3,4-bisphosphate binding.;

Immunogen

Purified recombinant fragment of human DAPP1 (AA: 127-276) expressed in E. Coli.

Formulation

Purified antibody in PBS with 0.05% sodium azide

Application Note

ELISA: 1/10000; WB: 1/500 - 1/2000; FCM: 1/200 - 1/400

Mouse Monoclonal Antibody to DAPP1 - Additional Information

Gene ID 27071

Other Names

BAM32

Dilution

WB~~1:1000
FC~~1:10~50
E~~N/A

Storage

Maintain refrigerated at 2-8°C for up to 6 months. For long term storage store at -20°C in small aliquots to prevent freeze-thaw cycles.

Precautions

Mouse Monoclonal Antibody to DAPP1 is for research use only and not for use in diagnostic or therapeutic procedures.

Mouse Monoclonal Antibody to DAPP1 - Protein Information

Name DAPP1

Synonyms BAM32

Function

May act as a B-cell-associated adapter that regulates B-cell antigen receptor (BCR)-signaling downstream of PI3K.

Cellular Location

Cytoplasm. Membrane; Peripheral membrane protein. Note=Membrane-associated after cell stimulation leading to its translocation

Tissue Location

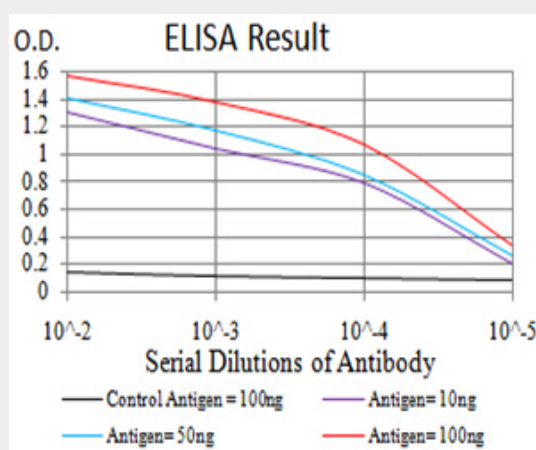
Highly expressed in placenta and lung, followed by brain, heart, kidney, liver, pancreas and skeletal muscle. Expressed by B-lymphocytes, but not T-lymphocytes or nonhematopoietic cells

Mouse Monoclonal Antibody to DAPP1 - Protocols

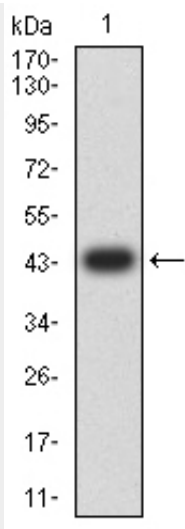
Provided below are standard protocols that you may find useful for product applications.

- [Western Blot](#)
- [Blocking Peptides](#)
- [Dot Blot](#)
- [Immunohistochemistry](#)
- [Immunofluorescence](#)
- [Immunoprecipitation](#)
- [Flow Cytometry](#)
- [Cell Culture](#)

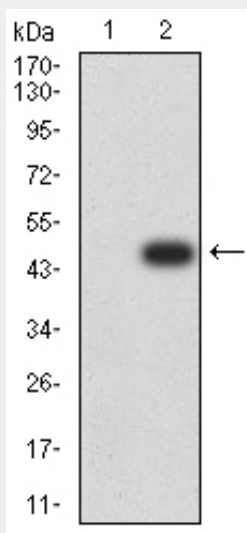
Mouse Monoclonal Antibody to DAPP1 - Images



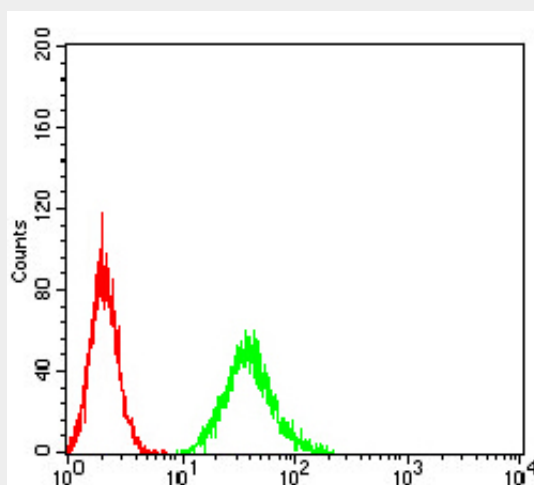
Black line: Control Antigen (100 ng);Purple line: Antigen (10ng); Blue line: Antigen (50 ng); Red line:Antigen (100 ng)



Western blot analysis using DAPP1 mAb against human DAPP1 (AA: 127-276) recombinant protein. (Expected MW is 43.5 kDa)



Western blot analysis using DAPP1 mAb against HEK293 (1) and DAPP1 (AA: 127-276)-hIgGfC transfected HEK293 (2) cell lysate.



Flow cytometric analysis of A549 cells using DAPP1 mouse mAb (green) and negative control

(red).

Mouse Monoclonal Antibody to DAPP1 - References

1.J Immunol. 2011 Oct 15;187(8):3972-8. ; 2.J Immunol. 2004 Nov 1;173(9):5601-9.;