

Mouse Monoclonal Antibody to PSMC3
Purified Mouse Monoclonal Antibody
Catalog # AO2374a**Specification**

Mouse Monoclonal Antibody to PSMC3 - Product Information

Application	WB, IHC, FC, ICC, E
Primary Accession	P17980
Reactivity	Human, Rat, Monkey
Host	Mouse
Clonality	Monoclonal
Isotype	Mouse IgG1
Calculated MW	49kDa KDa

Description

The 26S proteasome is a multicatalytic proteinase complex with a highly ordered structure composed of 2 complexes, a 20S core and a 19S regulator. The 20S core is composed of 4 rings of 28 non-identical subunits; 2 rings are composed of 7 alpha subunits and 2 rings are composed of 7 beta subunits. The 19S regulator is composed of a base, which contains 6 ATPase subunits and 2 non-ATPase subunits, and a lid, which contains up to 10 non-ATPase subunits. Proteasomes are distributed throughout eukaryotic cells at a high concentration and cleave peptides in an ATP/ubiquitin-dependent process in a non-lysosomal pathway. An essential function of a modified proteasome, the immunoproteasome, is the processing of class I MHC peptides. This gene encodes one of the ATPase subunits, a member of the triple-A family of ATPases that have chaperone-like activity. This subunit may compete with PSMC2 for binding to the HIV tat protein to regulate the interaction between the viral protein and the transcription complex. A pseudogene has been identified on chromosome 9.;

Immunogen

Purified recombinant fragment of human PSMC3 (AA: 53-152) expressed in E. Coli.

Formulation

Purified antibody in PBS with 0.05% sodium azide

Application Note

ELISA: 1/10000; WB: 1/500 - 1/2000; IHC: 1/200 - 1/1000; ICC: 1/200 - 1/1000; FCM: 1/200 - 1/400

Mouse Monoclonal Antibody to PSMC3 - Additional Information

Gene ID 5702

Other Names

TBP1

Dilution

WB~~1:1000
IHC~~1:100~500
FC~~1:10~50
ICC~~N/A
E~~N/A

Storage

Maintain refrigerated at 2-8°C for up to 6 months. For long term storage store at -20°C in small aliquots to prevent freeze-thaw cycles.

Precautions

Mouse Monoclonal Antibody to PSMC3 is for research use only and not for use in diagnostic or therapeutic procedures.

Mouse Monoclonal Antibody to PSMC3 - Protein Information

Name PSMC3

Synonyms TBP1

Function

Component of the 26S proteasome, a multiprotein complex involved in the ATP-dependent degradation of ubiquitinated proteins. This complex plays a key role in the maintenance of protein homeostasis by removing misfolded or damaged proteins, which could impair cellular functions, and by removing proteins whose functions are no longer required. Therefore, the proteasome participates in numerous cellular processes, including cell cycle progression, apoptosis, or DNA damage repair. PSMC3 belongs to the heterohexameric ring of AAA (ATPases associated with diverse cellular activities) proteins that unfolds ubiquitinated target proteins that are concurrently translocated into a proteolytic chamber and degraded into peptides.

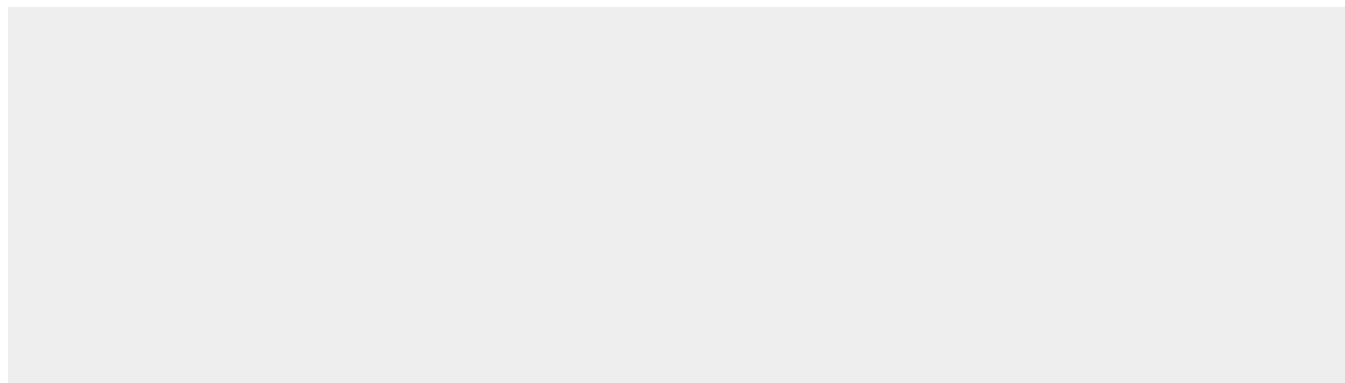
Cellular Location

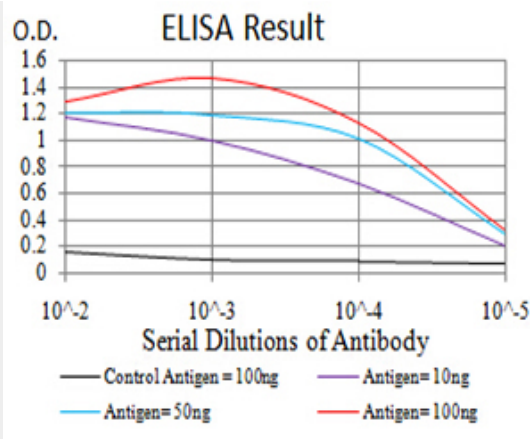
Cytoplasm. Nucleus. Note=Colocalizes with TRIM5 in the cytoplasmic bodies
{ECO:0000250|UniProtKB:O88685}

Mouse Monoclonal Antibody to PSMC3 - Protocols

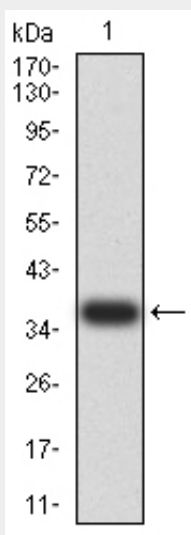
Provided below are standard protocols that you may find useful for product applications.

- [Western Blot](#)
- [Blocking Peptides](#)
- [Dot Blot](#)
- [Immunohistochemistry](#)
- [Immunofluorescence](#)
- [Immunoprecipitation](#)
- [Flow Cytometry](#)
- [Cell Culture](#)

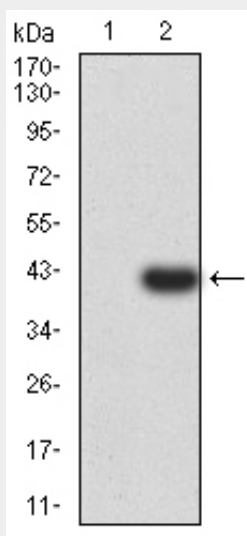
Mouse Monoclonal Antibody to PSMC3 - Images



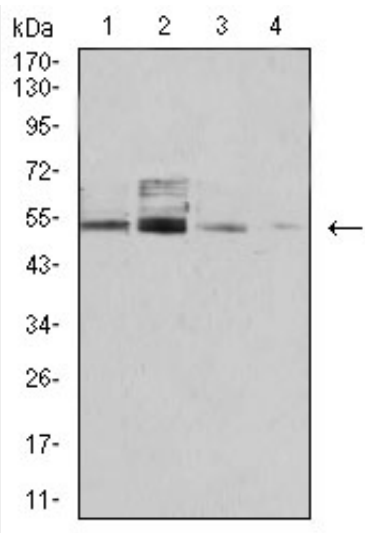
Black line: Control Antigen (100 ng); Purple line: Antigen (10ng); Blue line: Antigen (50 ng); Red line: Antigen (100 ng)



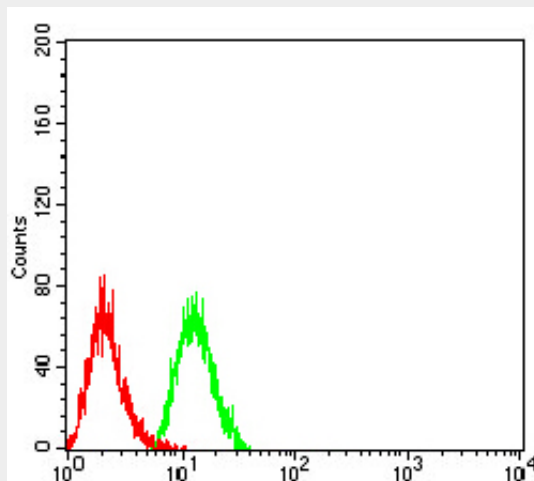
Western blot analysis using PSMC3 mAb against human PSMC3 (AA: 53-152) recombinant protein. (Expected MW is 37.2 kDa)



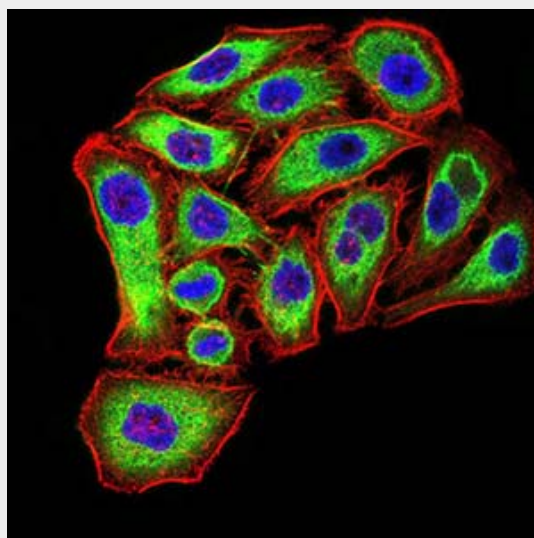
Western blot analysis using PSMC3 mAb against HEK293 (1) and PSMC3 (AA: 53-152)-hIgGFc transfected HEK293 (2) cell lysate.



Western blot analysis using PSMC3 mouse mAb against COS7 (1), C6 (2), Hela (3), and A431 (4) cell lysate.

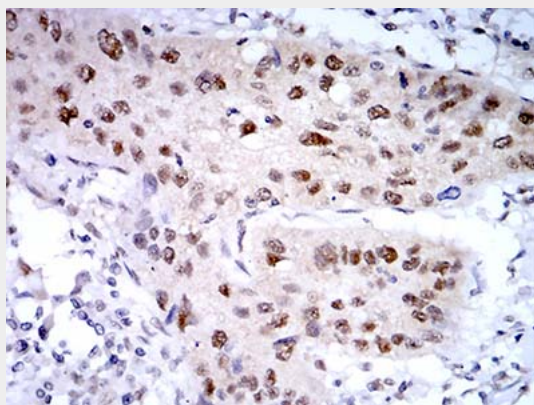


Flow cytometric analysis of Hela cells using PSMC3 mouse mAb (green) and negative control (red).



Immunofluorescence analysis of MCF-7 cells using PSMC3 mouse mAb (green). Blue: DRAQ5

fluorescent DNA dye. Red: Actin filaments have been labeled with Alexa Fluor- 555 phalloidin. Secondary antibody from Fisher



Immunohistochemical analysis of paraffin-embedded lung cancer tissues using PSMC3 mouse mAb with DAB staining.

Mouse Monoclonal Antibody to PSMC3 - References

1.Oncogene. 2012 Apr 5;31(14):1817-24. ; 2.PLoS One. 2011;6(10):e22800.;