

Mouse Monoclonal Antibody to C3C
Purified Mouse Monoclonal Antibody
Catalog # AO2389a**Specification**

Mouse Monoclonal Antibody to C3C - Product Information

Application	WB, IHC, FC, ICC, E
Primary Accession	P01024
Reactivity	Human
Host	Mouse
Clonality	Monoclonal
Isotype	Mouse IgG1
Calculated MW	187.1kDa KDa

Description

Complement component C3 plays a central role in the activation of complement system. Its activation is required for both classical and alternative complement activation pathways. The encoded preproprotein is proteolytically processed to generate alpha and beta subunits that form the mature protein, which is then further processed to generate numerous peptide products. The C3a peptide, also known as the C3a anaphylatoxin, modulates inflammation and possesses antimicrobial activity. Mutations in this gene are associated with atypical hemolytic uremic syndrome and age-related macular degeneration in human patients.;

Immunogen

Purified recombinant fragment of human C3C (AA: 1521-1649) expressed in E. Coli.

Formulation

Purified antibody in PBS with 0.05% sodium azide

Application Note

ELISA: 1/10000; WB: 1/500 - 1/2000; IHC: 1/200 - 1/1000; ICC: 1/200 - 1/1000; FCM: 1/200 - 1/400

Mouse Monoclonal Antibody to C3C - Additional Information

Gene ID 718

Other Names

ASP; C3a; C3b; AHUS5; ARMD9; CPAMD1; HEL-S-62p

Dilution

WB~~1:1000
IHC~~1:100~500
FC~~1:10~50
ICC~~N/A
E~~N/A

Storage

Maintain refrigerated at 2-8°C for up to 6 months. For long term storage store at -20°C in small aliquots to prevent freeze-thaw cycles.

Precautions

Mouse Monoclonal Antibody to C3C is for research use only and not for use in diagnostic or therapeutic procedures.

Mouse Monoclonal Antibody to C3C - Protein Information

Name C3

Synonyms CPAMD1

Function

C3 plays a central role in the activation of the complement system. Its processing by C3 convertase is the central reaction in both classical and alternative complement pathways. After activation C3b can bind covalently, via its reactive thioester, to cell surface carbohydrates or immune aggregates. [C3-beta-c]: Acts as a chemoattractant for neutrophils in chronic inflammation.

Cellular Location

Secreted.

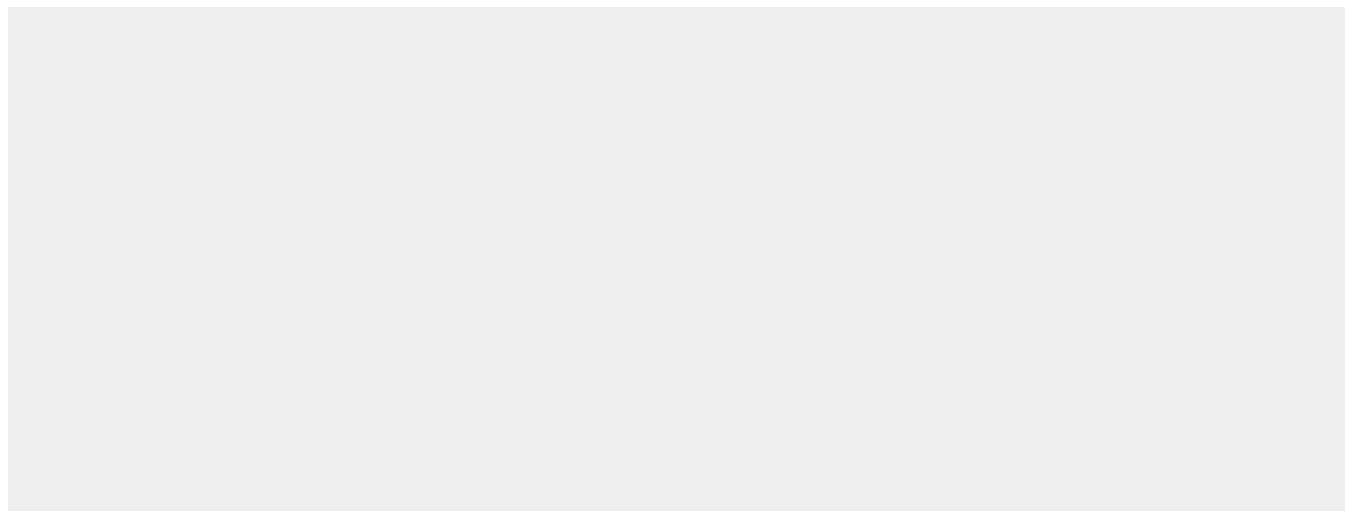
Tissue Location

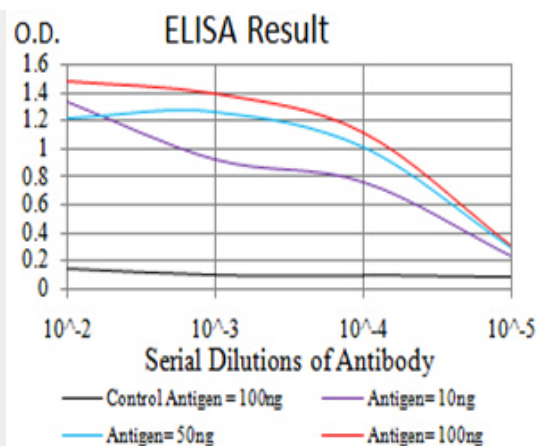
Plasma. The acylation stimulating protein (ASP) is expressed in adipocytes and released into the plasma during both the fasting and postprandial periods.

Mouse Monoclonal Antibody to C3C - Protocols

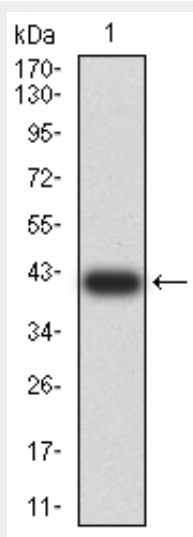
Provided below are standard protocols that you may find useful for product applications.

- [Western Blot](#)
- [Blocking Peptides](#)
- [Dot Blot](#)
- [Immunohistochemistry](#)
- [Immunofluorescence](#)
- [Immunoprecipitation](#)
- [Flow Cytometry](#)
- [Cell Culture](#)

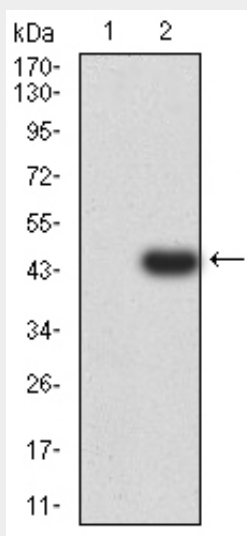
Mouse Monoclonal Antibody to C3C - Images



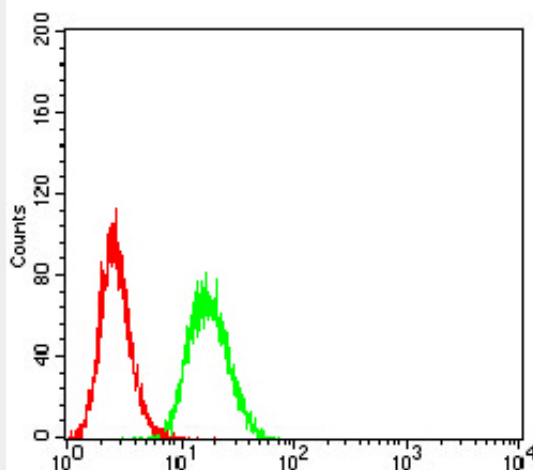
Black line: Control Antigen (100 ng); Purple line: Antigen (10ng); Blue line: Antigen (50 ng); Red line: Antigen (100 ng)



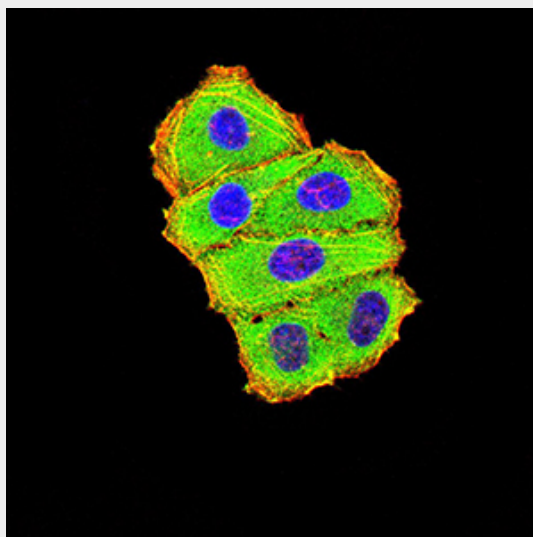
Western blot analysis using C3C mAb against human C3C (AA: 1521-1649) recombinant protein. (Expected MW is 40.7 kDa)



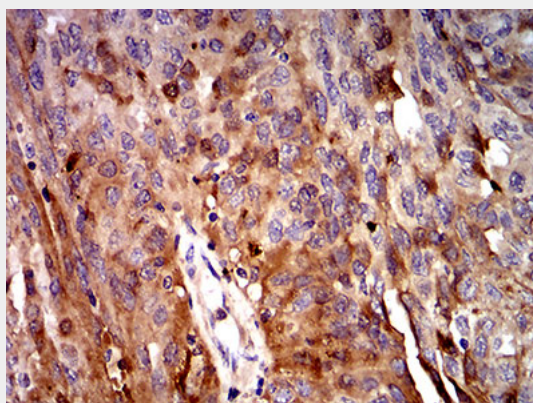
Western blot analysis using C3C mAb against HEK293 (1) and C3C (AA: 1521-1649)-hlgGfC transfected HEK293 (2) cell lysate.



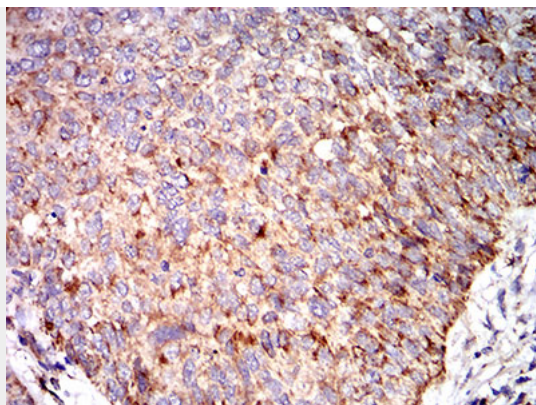
Flow cytometric analysis of Hela cells using C3C mouse mAb (green) and negative control (red).



Immunofluorescence analysis of Hela cells using C3C mouse mAb (green). Blue: DRAQ5 fluorescent DNA dye. Red: Actin filaments have been labeled with Alexa Fluor-555 phalloidin. Secondary antibody from Fisher



Immunohistochemical analysis of paraffin-embedded ovarian cancer tissues using C3C mouse mAb with DAB staining.



Immunohistochemical analysis of paraffin-embedded bladder cancer tissues using C3C mouse mAb with DAB staining.

Mouse Monoclonal Antibody to C3C - References

1.Blood. 2015 Apr 9;125(15):2359-69. ; 2.Mediators Inflamm. 2013;2013:716902.;