

**Mouse Monoclonal Antibody to CD2**  
**Purified Mouse Monoclonal Antibody**  
**Catalog # AO2392a****Specification**

---

**Mouse Monoclonal Antibody to CD2 - Product Information**

Application	WB, IHC, FC, E
Primary Accession	<a href="#">P06729</a>
Reactivity	Human, Mouse
Host	Mouse
Clonality	Monoclonal
Isotype	Mouse IgG1
Calculated MW	39.4kDa KDa

**Description**

CD2 is a surface antigen of the human T-lymphocyte lineage that is expressed on all peripheral blood T cells (summarized by Sewell et al., 1986 [PubMed 3490670]). It is one of the earliest T-cell markers, being present on more than 95% of thymocytes; it is also found on some natural killer cells but not on B lymphocytes. Monoclonal antibodies directed against CD2 inhibit the formation of rosettes with sheep erythrocytes, indicating that CD2 is the erythrocyte receptor or is closely associated with it.;

**Immunogen**

Purified recombinant fragment of human CD2 (AA: 25-140) expressed in E. Coli.

**Formulation**

Purified antibody in PBS with 0.05% sodium azide

**Application Note**

ELISA: 1/10000; WB: 1/500 - 1/2000; IHC: 1/200 - 1/1000; FCM: 1/200 - 1/400

**Mouse Monoclonal Antibody to CD2 - Additional Information**

**Gene ID** 914

**Other Names**

T11; SRBC; LFA-2

**Dilution**

WB~~1:1000  
IHC~~1:100~500  
FC~~1:10~50  
E~~N/A

**Storage**

Maintain refrigerated at 2-8°C for up to 6 months. For long term storage store at -20°C in small aliquots to prevent freeze-thaw cycles.

**Precautions**

Mouse Monoclonal Antibody to CD2 is for research use only and not for use in diagnostic or

therapeutic procedures.

## Mouse Monoclonal Antibody to CD2 - Protein Information

**Name** CD2

**Synonyms** SRBC

### Function

CD2 interacts with lymphocyte function-associated antigen CD58 (LFA-3) and CD48/BCM1 to mediate adhesion between T-cells and other cell types. CD2 is implicated in the triggering of T-cells, the cytoplasmic domain is implicated in the signaling function.

### Cellular Location

Cell membrane; Single-pass type I membrane protein

### Tissue Location

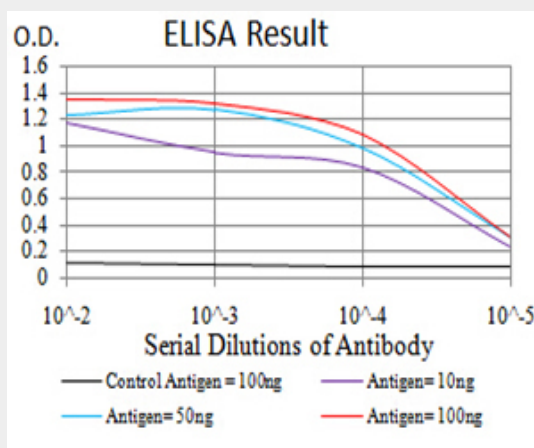
Expressed in natural killer cells (at protein level).

## Mouse Monoclonal Antibody to CD2 - Protocols

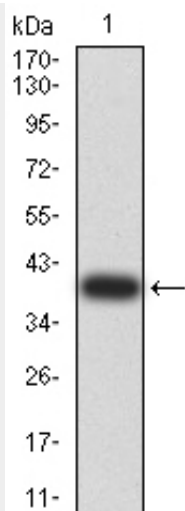
Provided below are standard protocols that you may find useful for product applications.

- [Western Blot](#)
- [Blocking Peptides](#)
- [Dot Blot](#)
- [Immunohistochemistry](#)
- [Immunofluorescence](#)
- [Immunoprecipitation](#)
- [Flow Cytometry](#)
- [Cell Culture](#)

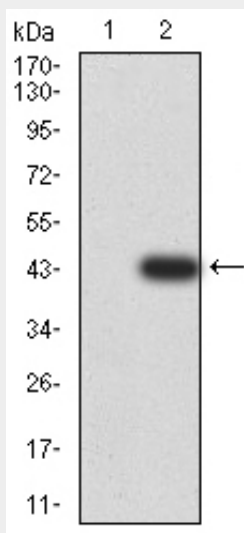
## Mouse Monoclonal Antibody to CD2 - Images



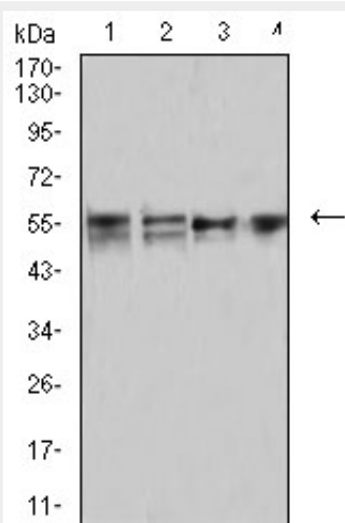
Black line: Control Antigen (100 ng); Purple line: Antigen (10ng); Blue line: Antigen (50 ng); Red line: Antigen (100 ng)



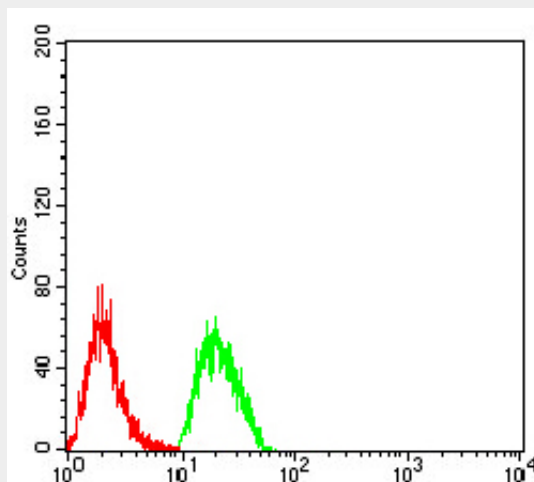
Western blot analysis using CD2 mAb against human CD2 (AA: 25-140) recombinant protein. (Expected MW is 39.2 kDa)



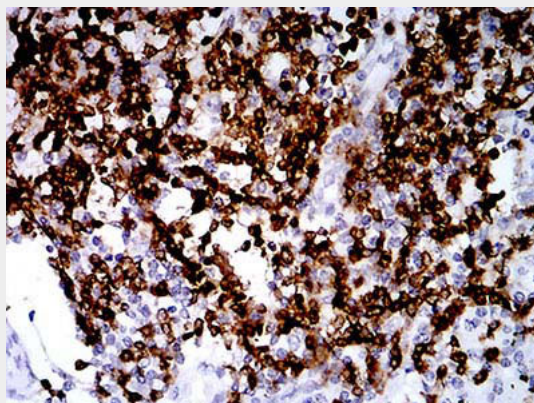
Western blot analysis using CD2 mAb against HEK293 (1) and CD2 (AA: 25-140)-hIgGFc transfected HEK293 (2) cell lysate.



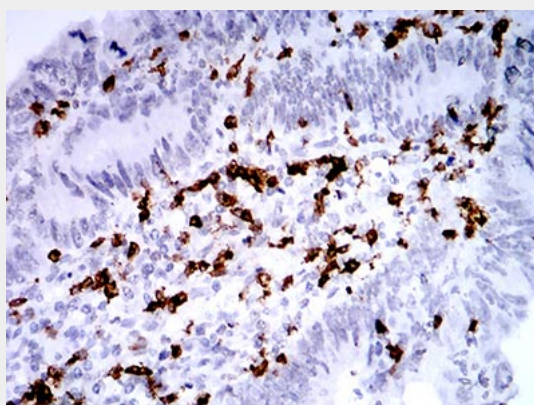
Western blot analysis using CD2 mouse mAb against MOLT4 (1), MCF-7 (2), Hela (3), and L1210 (4) cell lysate.



Flow cytometric analysis of Hela cells using CD2 mouse mAb (green) and negative control (red).



Immunohistochemical analysis of paraffin-embedded lung cancer tissues using CD2 mouse mAb with DAB staining.



Immunohistochemical analysis of paraffin-embedded rectum cancer tissues using CD2 mouse mAb with DAB staining.

#### Mouse Monoclonal Antibody to CD2 - References

1.J Cell Mol Med. 2014 Apr;18(4):600-9. ; 2.J Virol. 2013 Aug;87(16):9148-58. ;