

Mouse Monoclonal Antibody to CDCP1
Purified Mouse Monoclonal Antibody
Catalog # AO2415a**Specification**

Mouse Monoclonal Antibody to CDCP1 - Product Information

Application	E, WB, ICC
Primary Accession	Q9H5V8
Reactivity	Human
Host	Mouse
Clonality	Monoclonal
Isotype	Mouse IgG1
Calculated MW	93kDa KDa

Description

This gene encodes a transmembrane protein which contains three extracellular CUB domains and acts as a substrate for Src family kinases. The protein plays a role in the tyrosine phosphorylation-dependent regulation of cellular events that are involved in tumor invasion and metastasis. Alternative splicing results in multiple transcript variants of this gene. ;

Immunogen

Purified recombinant fragment of human CDCP1 (AA: 692-836) expressed in E. Coli.

Formulation

Purified antibody in PBS with 0.05% sodium azide

Application Note

ELISA: 1/10000; WB: 1/500 - 1/2000; IHC: 1/200 - 1/1000;

Mouse Monoclonal Antibody to CDCP1 - Additional Information

Gene ID 64866

Other Names

CD318; TRASK; SIMA135

Storage

Maintain refrigerated at 2-8°C for up to 6 months. For long term storage store at -20°C in small aliquots to prevent freeze-thaw cycles.

Precautions

Mouse Monoclonal Antibody to CDCP1 is for research use only and not for use in diagnostic or therapeutic procedures.

Mouse Monoclonal Antibody to CDCP1 - Protein Information

Name CDCP1

Synonyms TRASK

Function

May be involved in cell adhesion and cell matrix association. May play a role in the regulation of anchorage versus migration or proliferation versus differentiation via its phosphorylation. May be a novel marker for leukemia diagnosis and for immature hematopoietic stem cell subsets. Belongs to the tetraspanin web involved in tumor progression and metastasis.

Cellular Location

[Isoform 1]: Cell membrane; Single- pass membrane protein. Note=Shedding may also lead to a soluble peptide

Tissue Location

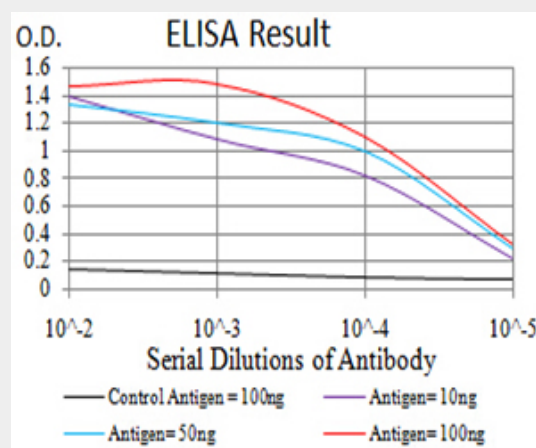
Highly expressed in mitotic cells with low expression during interphase. Detected at highest levels in skeletal muscle and colon with lower levels in kidney, small intestine, placenta and lung. Up-regulated in a number of human tumor cell lines, as well as in colorectal cancer, breast carcinoma and lung cancer. Also expressed in cells with phenotypes reminiscent of mesenchymal stem cells and neural stem cells.

Mouse Monoclonal Antibody to CDCP1 - Protocols

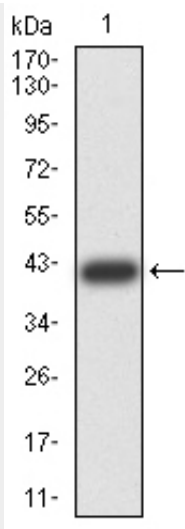
Provided below are standard protocols that you may find useful for product applications.

- [Western Blot](#)
- [Blocking Peptides](#)
- [Dot Blot](#)
- [Immunohistochemistry](#)
- [Immunofluorescence](#)
- [Immunoprecipitation](#)
- [Flow Cytometry](#)
- [Cell Culture](#)

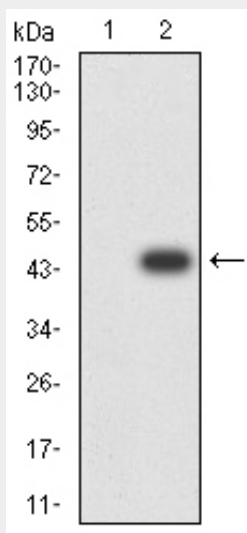
Mouse Monoclonal Antibody to CDCP1 - Images



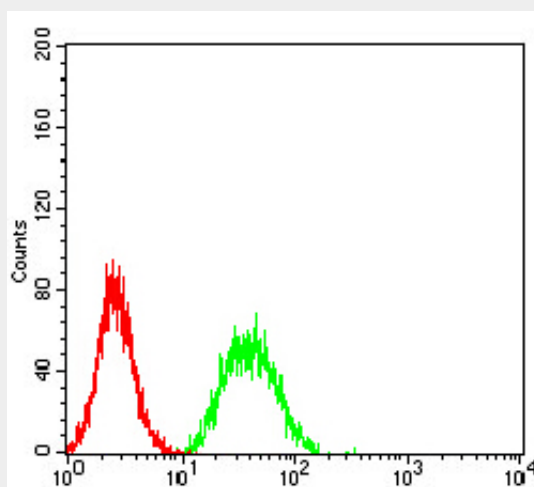
Black line: Control Antigen (100 ng);Purple line: Antigen (10ng); Blue line: Antigen (50 ng); Red line:Antigen (100 ng)



Western blot analysis using CDCP1 mAb against human CDCP1 (AA: 692-836) recombinant protein. (Expected MW is 42 kDa)



Western blot analysis using CDCP1 mAb against HEK293 (1) and CDCP1 (AA: 692-836)-hlgGfC transfected HEK293 (2) cell lysate.



Immunohistochemical analysis of paraffin-embedded Hela tissues using CDCP1 mouse mAb with

DAB staining.

Mouse Monoclonal Antibody to CDCP1 - References

1.Cell Rep. 2015 Apr 28;11(4):564-76. ; 2.BMC Cancer. 2014 Oct 9;14:754. ;