

**Mouse Monoclonal Antibody to ESRRA**  
**Purified Mouse Monoclonal Antibody**  
**Catalog # AO2422a****Specification**

---

**Mouse Monoclonal Antibody to ESRRA - Product Information**

|                   |                        |
|-------------------|------------------------|
| Application       | <b>WB, FC, E</b>       |
| Primary Accession | <a href="#">P11474</a> |
| Reactivity        | <b>Human</b>           |
| Host              | <b>Mouse</b>           |
| Clonality         | <b>Monoclonal</b>      |
| Isotype           | <b>Mouse IgG1</b>      |
| Calculated MW     | <b>45.5kDa KDa</b>     |

**Description**

The protein encoded by this gene is a nuclear receptor that is closely related to the estrogen receptor. This protein acts as a site-specific transcription regulator and has been also shown to interact with estrogen and the transcription factor TFIIB by direct protein-protein contact. The binding and regulatory activities of this protein have been demonstrated in the regulation of a variety of genes including lactoferrin, osteopontin, medium-chain acyl coenzyme A dehydrogenase (MCAD) and thyroid hormone receptor genes. A processed pseudogene of ESRRA is located on chromosome 13q12.1. Alternatively spliced transcript variants have been found for this gene.;

**Immunogen**

Purified recombinant fragment of human ESRRA (AA: 198-376) expressed in E. Coli.

**Formulation**

Purified antibody in PBS with 0.05% sodium azide

**Application Note**

ELISA: 1/10000; WB: 1/500 - 1/2000; FCM: 1/200 - 1/400

**Mouse Monoclonal Antibody to ESRRA - Additional Information**

**Gene ID** 2101

**Other Names**

ERR1; ERRa; ESRL1; NR3B1; ERRalpha

**Dilution**

WB~~1:1000  
FC~~1:10~50  
E~~N/A

**Storage**

Maintain refrigerated at 2-8°C for up to 6 months. For long term storage store at -20°C in small aliquots to prevent freeze-thaw cycles.

**Precautions**

Mouse Monoclonal Antibody to ESRRA is for research use only and not for use in diagnostic or

therapeutic procedures.

## Mouse Monoclonal Antibody to ESRRA - Protein Information

**Name** ESRRA

**Synonyms** ERR1, ESRL1, NR3B1

### Function

Binds to an ERR-alpha response element (ERRE) containing a single consensus half-site, 5'-TNAAGGTCA-3'. Can bind to the medium- chain acyl coenzyme A dehydrogenase (MCAD) response element NRRE-1 and may act as an important regulator of MCAD promoter. Binds to the C1 region of the lactoferrin gene promoter. Requires dimerization and the coactivator, PGC-1A, for full activity. The ERRalpha/PGC1alpha complex is a regulator of energy metabolism. Induces the expression of PERM1 in the skeletal muscle.

### Cellular Location

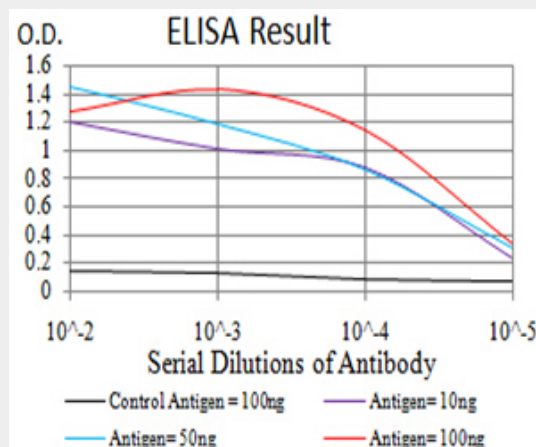
Nucleus {ECO:0000255|PROSITE-ProRule:PRU00407, ECO:0000269|PubMed:18063693, ECO:0000269|PubMed:21190936}. Cytoplasm. Note=Co-localizes to the cytoplasm only in presence of MAPK15.

## Mouse Monoclonal Antibody to ESRRA - Protocols

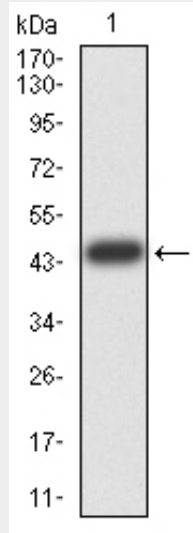
Provided below are standard protocols that you may find useful for product applications.

- [Western Blot](#)
- [Blocking Peptides](#)
- [Dot Blot](#)
- [Immunohistochemistry](#)
- [Immunofluorescence](#)
- [Immunoprecipitation](#)
- [Flow Cytometry](#)
- [Cell Culture](#)

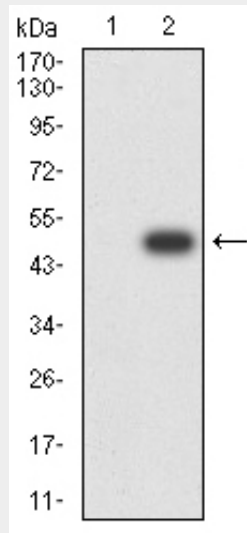
## Mouse Monoclonal Antibody to ESRRA - Images



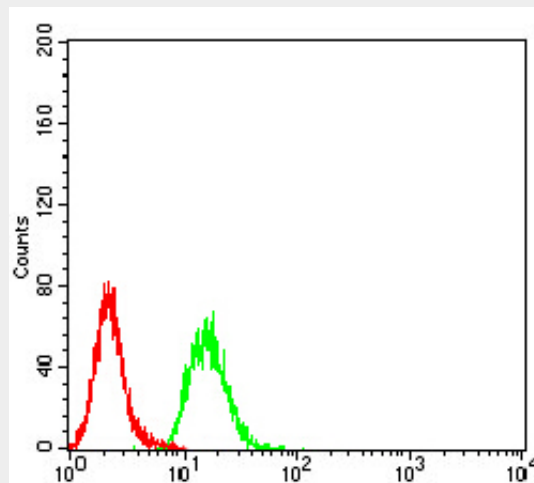
Black line: Control Antigen (100 ng); Purple line: Antigen (10ng); Blue line: Antigen (50 ng); Red line: Antigen (100 ng)



Western blot analysis using ESRRA mAb against human ESRRA (AA: 198-376) recombinant protein. (Expected MW is 45.3 kDa)



Western blot analysis using ESRRA mAb against HEK293 (1) and ESRRA (AA: 198-376)-hIgGFc transfected HEK293 (2) cell lysate.



Flow cytometric analysis of HeLa cells using ESRRA mouse mAb (green) and negative control

(red).

### **Mouse Monoclonal Antibody to ESRRRA - References**

1. J Huazhong Univ Sci Technolog Med Sci. 2014 Dec;34(6):875-81. ; 2. Mol Ther. 2014 Apr;22(4):743-51. ;