

**Mouse Monoclonal Antibody to SOD2**  
**Purified Mouse Monoclonal Antibody**  
**Catalog # AO2424a****Specification**

---

**Mouse Monoclonal Antibody to SOD2 - Product Information**

Application	WB, IHC, FC, E
Primary Accession	<a href="#">P04179</a>
Reactivity	Human
Host	Mouse
Clonality	Monoclonal
Isotype	Mouse IgG1
Calculated MW	24.7kDa KDa

**Description**

This gene is a member of the iron/manganese superoxide dismutase family. It encodes a mitochondrial protein that forms a homotetramer and binds one manganese ion per subunit. This protein binds to the superoxide byproducts of oxidative phosphorylation and converts them to hydrogen peroxide and diatomic oxygen. Mutations in this gene have been associated with idiopathic cardiomyopathy (IDC), premature aging, sporadic motor neuron disease, and cancer. Alternative splicing of this gene results in multiple transcript variants. A related pseudogene has been identified on chromosome 1.;

**Immunogen**

Purified recombinant fragment of human SOD2 (AA: 1-222) expressed in E. Coli.

**Formulation**

Purified antibody in PBS with 0.05% sodium azide

**Application Note**

ELISA: 1/10000; WB: 1/500 - 1/2000; IHC: 1/200 - 1/1000; FCM: 1/200 - 1/400

**Mouse Monoclonal Antibody to SOD2 - Additional Information**

**Gene ID** 6648

**Other Names**

IPOB; IPO-B; MNSOD; MVCD6; Mn-SOD

**Dilution**

WB~~1:1000  
IHC~~1:100~500  
FC~~1:10~50  
E~~N/A

**Storage**

Maintain refrigerated at 2-8°C for up to 6 months. For long term storage store at -20°C in small aliquots to prevent freeze-thaw cycles.

**Precautions**

Mouse Monoclonal Antibody to SOD2 is for research use only and not for use in diagnostic or therapeutic procedures.

## Mouse Monoclonal Antibody to SOD2 - Protein Information

**Name** SOD2

### Function

Destroys superoxide anion radicals which are normally produced within the cells and which are toxic to biological systems.

### Cellular Location

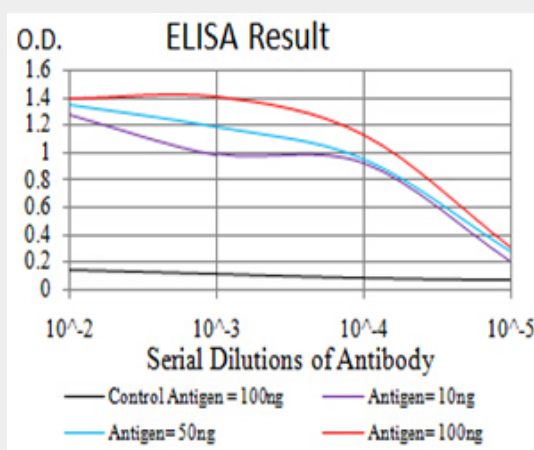
Mitochondrion matrix.

## Mouse Monoclonal Antibody to SOD2 - Protocols

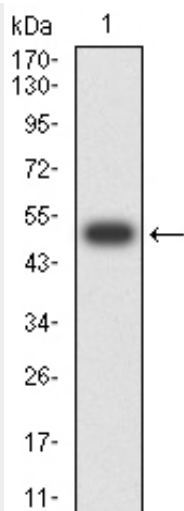
Provided below are standard protocols that you may find useful for product applications.

- [Western Blot](#)
- [Blocking Peptides](#)
- [Dot Blot](#)
- [Immunohistochemistry](#)
- [Immunofluorescence](#)
- [Immunoprecipitation](#)
- [Flow Cytometry](#)
- [Cell Culture](#)

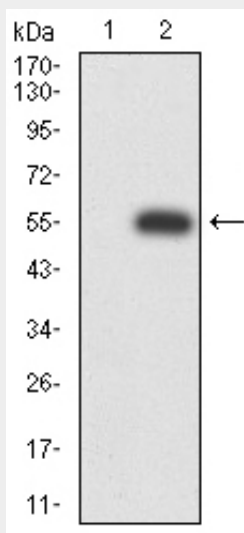
## Mouse Monoclonal Antibody to SOD2 - Images



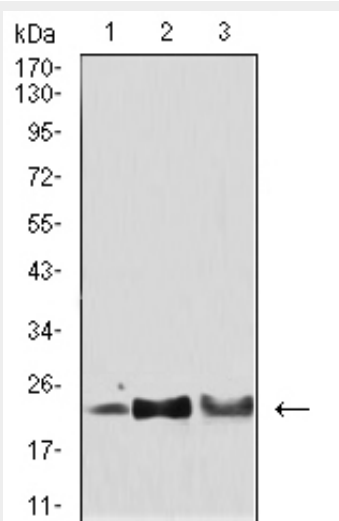
Black line: Control Antigen (100 ng); Purple line: Antigen (10ng); Blue line: Antigen (50 ng); Red line: Antigen (100 ng)



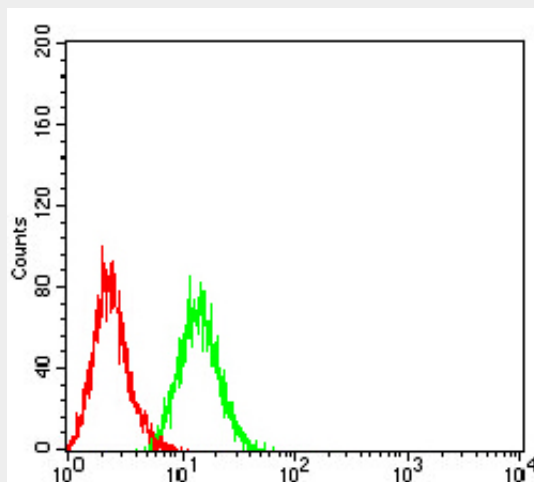
Western blot analysis using SOD2 mAb against human SOD2 (AA: 1-222) recombinant protein. (Expected MW is 50.7 kDa)



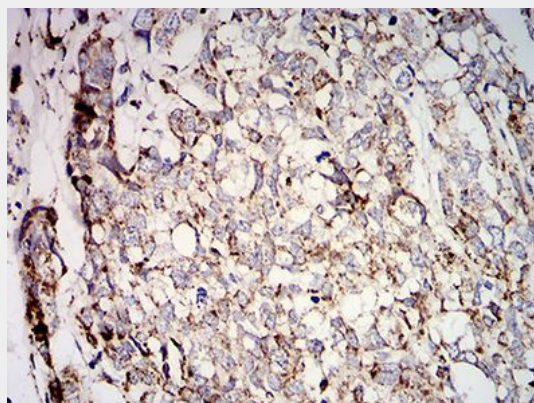
Western blot analysis using SOD2 mAb against HEK293 (1) and SOD2 (AA: 1-222)-hlgGFc transfected HEK293 (2) cell lysate.



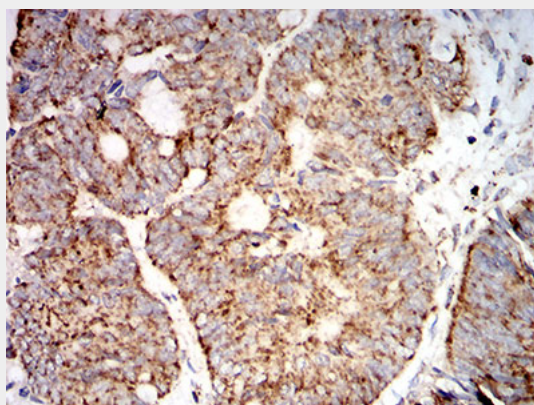
Western blot analysis using SOD2 mouse mAb against Hela (1), HepG2 (2), and SH-SY5Y (3) cell lysate.



Flow cytometric analysis of MCF-7 cells using SOD2 mouse mAb (green) and negative control (red).



Immunohistochemical analysis of paraffin-embedded breast cancer tissues using SOD2 mouse mAb with DAB staining.



Immunohistochemical analysis of paraffin-embedded rectum cancer tissues using SOD2 mouse mAb with DAB staining.

#### Mouse Monoclonal Antibody to SOD2 - References

1.Dis Markers. 2015;2015:746329. ; 2.Free Radic Biol Med. 2015 Dec;89:379-86.;