

Mouse Monoclonal Antibody to MMP2
Purified Mouse Monoclonal Antibody
Catalog # AO2455a**Specification**

Mouse Monoclonal Antibody to MMP2 - Product Information

Application	WB, FC, E
Primary Accession	P08253
Reactivity	Human, Mouse
Host	Mouse
Clonality	Monoclonal
Isotype	Mouse IgG1
Calculated MW	73.8kDa KDa

Description

This gene is a member of the matrix metalloproteinase (MMP) gene family, that are zinc-dependent enzymes capable of cleaving components of the extracellular matrix and molecules involved in signal transduction. The protein encoded by this gene is a gelatinase A, type IV collagenase, that contains three fibronectin type II repeats in its catalytic site that allow binding of denatured type IV and V collagen and elastin. Unlike most MMP family members, activation of this protein can occur on the cell membrane. This enzyme can be activated extracellularly by proteases, or, intracellularly by its S-glutathiolation with no requirement for proteolytical removal of the pro-domain. This protein is thought to be involved in multiple pathways including roles in the nervous system, endometrial menstrual breakdown, regulation of vascularization, and metastasis. Mutations in this gene have been associated with Winchester syndrome and Nodulosis-Arthropathy-Osteolysis (NAO) syndrome. Alternative splicing results in multiple transcript variants encoding different isoforms. ;

Immunogen

Purified recombinant fragment of human MMP2 (AA: 9-140) expressed in E. Coli.

Formulation

Purified antibody in PBS with 0.05% sodium azide

Application Note

ELISA: 1/10000; WB: 1/500 - 1/2000; FCM: 1/200 - 1/400

Mouse Monoclonal Antibody to MMP2 - Additional Information

Gene ID 4313

Other Names

CLG4; MONA; CLG4A; MMP-2; TBE-1; MMP-II

Dilution

WB~~1:1000
FC~~1:10~50
E~~N/A

Storage

Maintain refrigerated at 2-8°C for up to 6 months. For long term storage store at -20°C in small aliquots to prevent freeze-thaw cycles.

Precautions

Mouse Monoclonal Antibody to MMP2 is for research use only and not for use in diagnostic or therapeutic procedures.

Mouse Monoclonal Antibody to MMP2 - Protein Information

Name MMP2

Synonyms CLG4A

Function

Ubiquitous metalloproteinase that is involved in diverse functions such as remodeling of the vasculature, angiogenesis, tissue repair, tumor invasion, inflammation, and atherosclerotic plaque rupture. As well as degrading extracellular matrix proteins, can also act on several nonmatrix proteins such as big endothelial 1 and beta- type CGRP promoting vasoconstriction. Also cleaves KISS at a Gly-|-Leu bond. Appears to have a role in myocardial cell death pathways. Contributes to myocardial oxidative stress by regulating the activity of GSK3beta. Cleaves GSK3beta in vitro. Involved in the formation of the fibrovascular tissues in association with MMP14. [Isoform 2]: Mediates the proteolysis of CHUK/IKKA and initiates a primary innate immune response by inducing mitochondrial- nuclear stress signaling with activation of the pro-inflammatory NF-kappaB, NFAT and IRF transcriptional pathways.

Cellular Location

[Isoform 1]: Secreted, extracellular space, extracellular matrix. Membrane. Nucleus
Note=Colocalizes with integrin alphaV/beta3 at the membrane surface in angiogenic blood vessels and melanomas. Found in mitochondria, along microfibrils, and in nuclei of cardiomyocytes

Tissue Location

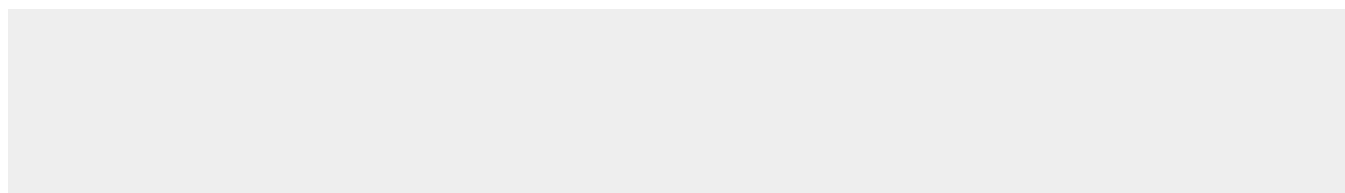
Produced by normal skin fibroblasts. PEX is expressed in a number of tumors including gliomas, breast and prostate

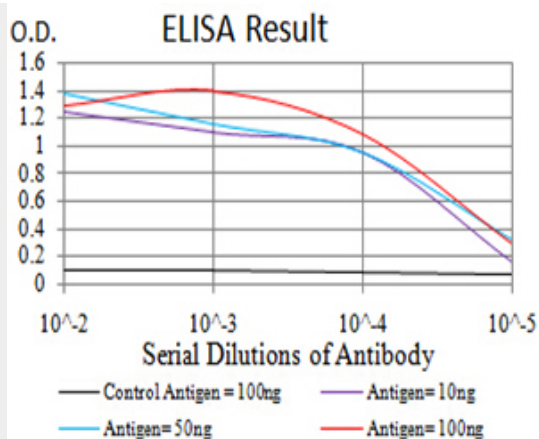
Mouse Monoclonal Antibody to MMP2 - Protocols

Provided below are standard protocols that you may find useful for product applications.

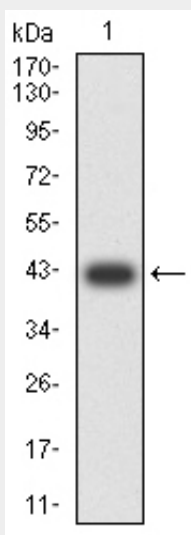
- [Western Blot](#)
- [Blocking Peptides](#)
- [Dot Blot](#)
- [Immunohistochemistry](#)
- [Immunofluorescence](#)
- [Immunoprecipitation](#)
- [Flow Cytometry](#)
- [Cell Culture](#)

Mouse Monoclonal Antibody to MMP2 - Images

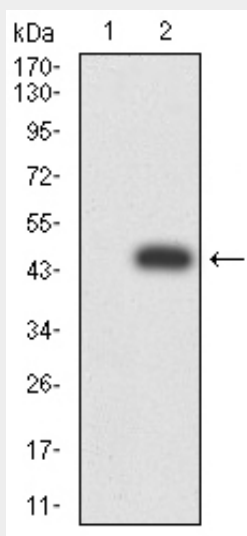




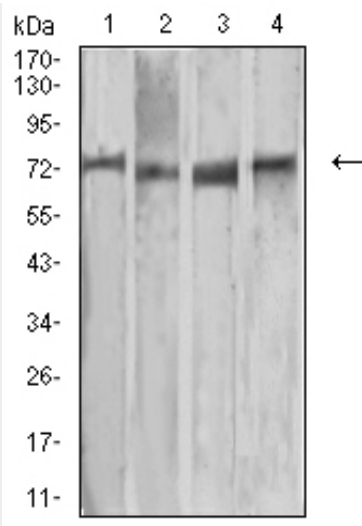
Black line: Control Antigen (100 ng); Purple line: Antigen (10ng); Blue line: Antigen (50 ng); Red line: Antigen (100 ng)



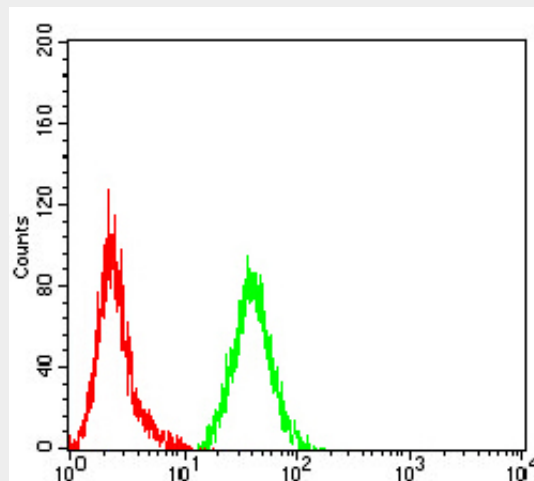
Western blot analysis using MMP2 mAb against human MMP2 (AA: 9-140) recombinant protein. (Expected MW is 42.2 kDa)



Western blot analysis using MMP2 mAb against HEK293 (1) and MMP2 (AA: 9-140)-hlgGfC transfected HEK293 (2) cell lysate.



Western blot analysis using MMP2 mouse mAb against MCF-7 (1), Raw264.7 (2), HUVEC (3), and T47D (4) cell lysate.



Flow cytometric analysis of Hela cells using MMP2 mouse mAb (green) and negative control (red).

Mouse Monoclonal Antibody to MMP2 - References

1.Reprod Biol Endocrinol. 2015 Sep 4;13:102. ; 2.PLoS One. 2015 Mar 27;10(3):e0121404. ;