

Mouse Monoclonal Antibody to CIRBP
Purified Mouse Monoclonal Antibody
Catalog # AO2476a**Specification**

Mouse Monoclonal Antibody to CIRBP - Product Information

Application	WB, IHC, E
Primary Accession	Q14011
Reactivity	Human
Host	Mouse
Clonality	Monoclonal
Isotype	Mouse IgG1
Calculated MW	18.6kDa KDa

Description

Cold-inducible mRNA binding protein that plays a protective role in the genotoxic stress response by stabilizing transcripts of genes involved in cell survival. Acts as a translational activator. Seems to play an essential role in cold-induced suppression of cell proliferation. Binds specifically to the 3-untranslated regions (3-UTRs) of stress-responsive transcripts RPA2 and TXN. Acts as a translational repressor (By similarity). Promotes assembly of stress granules (SGs), when overexpressed.;

Immunogen

Purified recombinant fragment of human CIRBP (AA: 1-90) expressed in E. Coli.

Formulation

Purified antibody in PBS with 0.05% sodium azide

Application Note

ELISA: 1/10000; WB: 1/500 - 1/2000; IHC: 1/200 - 1/1000;

Mouse Monoclonal Antibody to CIRBP - Additional Information

Gene ID 1153

Other Names

CIRP

Dilution

WB~~1:1000
IHC~~1:100~500
E~~N/A

Storage

Maintain refrigerated at 2-8°C for up to 6 months. For long term storage store at -20°C in small aliquots to prevent freeze-thaw cycles.

Precautions

Mouse Monoclonal Antibody to CIRBP is for research use only and not for use in diagnostic or therapeutic procedures.

Mouse Monoclonal Antibody to CIRBP - Protein Information

Name CIRBP

Synonyms A18HNRNP, CIRP

Function

Cold-inducible mRNA binding protein that plays a protective role in the genotoxic stress response by stabilizing transcripts of genes involved in cell survival. Acts as a translational activator. Seems to play an essential role in cold-induced suppression of cell proliferation. Binds specifically to the 3'-untranslated regions (3'-UTRs) of stress-responsive transcripts RPA2 and TXN. Acts as a translational repressor (By similarity). Promotes assembly of stress granules (SGs), when overexpressed.

Cellular Location

Nucleus, nucleoplasm. Cytoplasm Note=Translocates from the nucleus to the cytoplasm after exposure to UV radiation. Translocates from the nucleus to the cytoplasm into stress granules upon various cytoplasmic stresses, such as osmotic and heat shocks. Its recruitment into stress granules occurs in the absence of TIAR proteins (By similarity).

Tissue Location

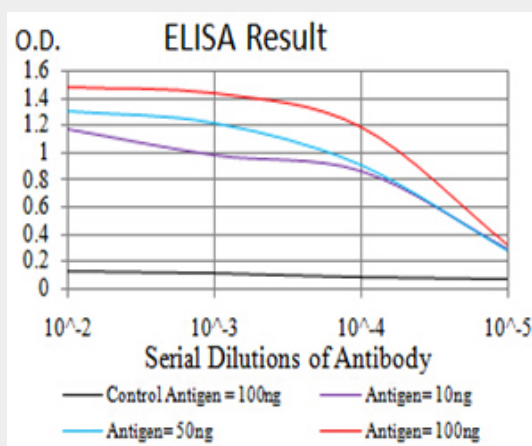
Ubiquitous.

Mouse Monoclonal Antibody to CIRBP - Protocols

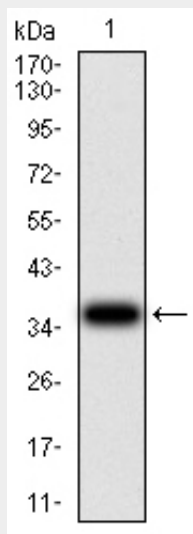
Provided below are standard protocols that you may find useful for product applications.

- [Western Blot](#)
- [Blocking Peptides](#)
- [Dot Blot](#)
- [Immunohistochemistry](#)
- [Immunofluorescence](#)
- [Immunoprecipitation](#)
- [Flow Cytometry](#)
- [Cell Culture](#)

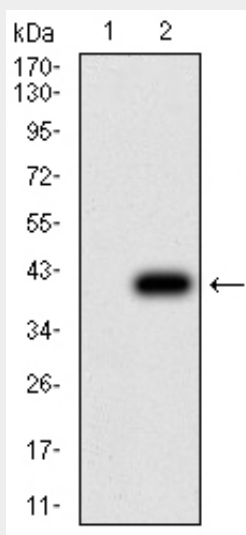
Mouse Monoclonal Antibody to CIRBP - Images



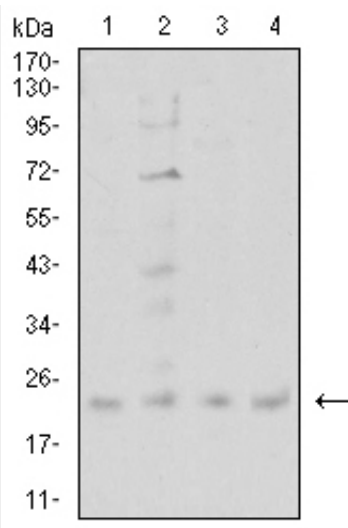
Black line: Control Antigen (100 ng);Purple line: Antigen (10ng); Blue line: Antigen (50 ng); Red line:Antigen (100 ng)



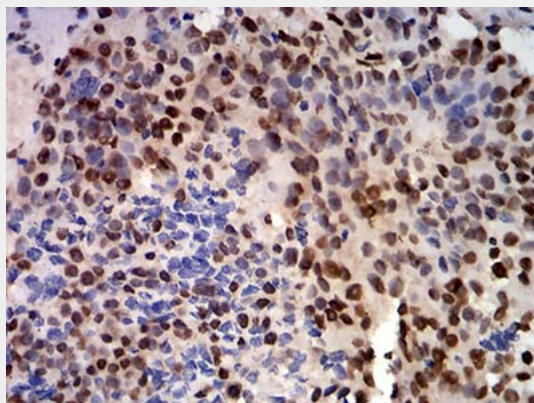
Western blot analysis using CIRBP mAb against human CIRBP (AA: 1-90) recombinant protein. (Expected MW is 35.9 kDa)



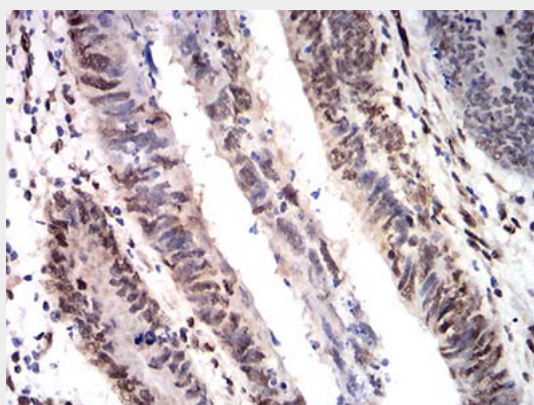
Western blot analysis using CIRBP mAb against HEK293 (1) and CIRBP (AA: 1-90)-hlgGFc transfected HEK293 (2) cell lysate.



Western blot analysis using CIRBP mouse mAb against SW480 (1), PC-3 (2), A431 (3), and U251 (4) cell lysate.



Immunohistochemical analysis of paraffin-embedded bladder cancer tissues using CIRBP mouse mAb with DAB staining.



Immunohistochemical analysis of paraffin-embedded rectum cancer tissues using CIRBP mouse mAb with DAB staining.

Mouse Monoclonal Antibody to CIRBP - References

1. Med Sci Monit. 2015 May 2;21:1256-60. ; 2. Int J Gynecol Pathol. 2003 Jul;22(3):240-7.;