

Mouse Monoclonal Antibody to CDC37
Purified Mouse Monoclonal Antibody
Catalog # AO2488a**Specification**

Mouse Monoclonal Antibody to CDC37 - Product Information

Application	WB, E
Primary Accession	Q16543
Reactivity	Human
Host	Mouse
Clonality	Monoclonal
Isotype	Mouse IgG2a
Calculated MW	44.5kDa KDa

Description

The protein encoded by this gene is highly similar to Cdc 37, a cell division cycle control protein of *Saccharomyces cerevisiae*. This protein is a molecular chaperone with specific function in cell signal transduction. It has been shown to form complex with Hsp90 and a variety of protein kinases including CDK4, CDK6, SRC, RAF-1, MOK, as well as eIF2 alpha kinases. It is thought to play a critical role in directing Hsp90 to its target kinases.;

Immunogen

Purified recombinant fragment of human CDC37 (AA: 241-378) expressed in E. Coli.

Formulation

Purified antibody in PBS with 0.05% sodium azide

Application Note

ELISA: 1/10000; WB: 1/500 - 1/2000;

Mouse Monoclonal Antibody to CDC37 - Additional Information

Gene ID 11140

Other Names

P50CDC37

Dilution

WB~~1:1000

E~~N/A

Storage

Maintain refrigerated at 2-8°C for up to 6 months. For long term storage store at -20°C in small aliquots to prevent freeze-thaw cycles.

Precautions

Mouse Monoclonal Antibody to CDC37 is for research use only and not for use in diagnostic or therapeutic procedures.

Mouse Monoclonal Antibody to CDC37 - Protein Information

Name CDC37

Synonyms CDC37A

Function

Co-chaperone that binds to numerous kinases and promotes their interaction with the Hsp90 complex, resulting in stabilization and promotion of their activity (PubMed:8666233). Inhibits HSP90AA1 ATPase activity (PubMed:23569206).

Cellular Location

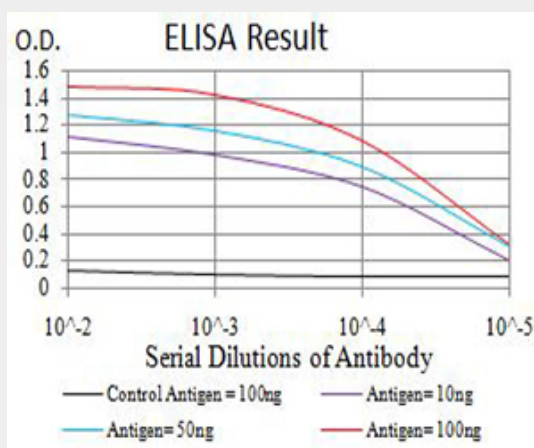
Cytoplasm.

Mouse Monoclonal Antibody to CDC37 - Protocols

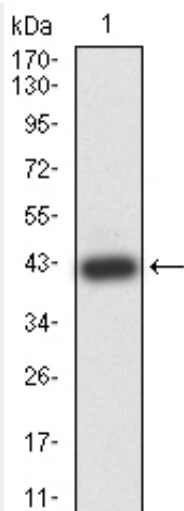
Provided below are standard protocols that you may find useful for product applications.

- [Western Blot](#)
- [Blocking Peptides](#)
- [Dot Blot](#)
- [Immunohistochemistry](#)
- [Immunofluorescence](#)
- [Immunoprecipitation](#)
- [Flow Cytometry](#)
- [Cell Culture](#)

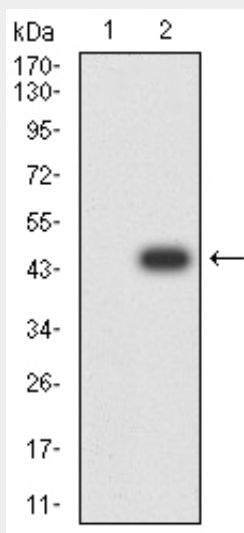
Mouse Monoclonal Antibody to CDC37 - Images



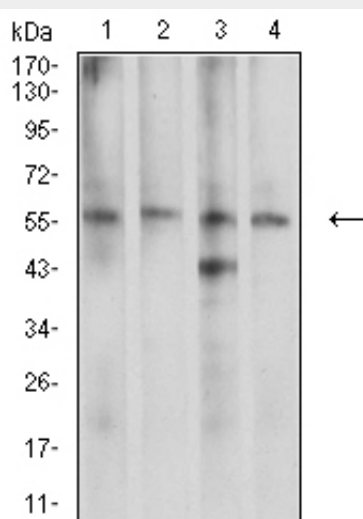
Black line: Control Antigen (100 ng);Purple line: Antigen (10ng); Blue line: Antigen (50 ng); Red line:Antigen (100 ng)



Western blot analysis using CDC37 mAb against human CDC37 (AA: 241-378) recombinant protein. (Expected MW is 41.6 kDa)



Western blot analysis using CDC37 mAb against HEK293 (1) and CDC37 (AA: 241-378)-hlgGfC transfected HEK293 (2) cell lysate.



Western blot analysis using CDC37 mouse mAb against K562 (1), LNcap (2), A431 (3), and HEK293 (4) cell lysate.

Mouse Monoclonal Antibody to CDC37 - References

1.Liver Int. 2015 Apr;35(4):1403-15. ; 2.Oncogene. 2009 Jan 15;28(2):157-69. ;