

Mouse Monoclonal Antibody to CBX7
Purified Mouse Monoclonal Antibody
Catalog # AO2490a**Specification**

Mouse Monoclonal Antibody to CBX7 - Product Information

Application	WB, ICC, E
Primary Accession	O95931
Reactivity	Human
Host	Mouse
Clonality	Monoclonal
Isotype	Mouse IgG1
Calculated MW	28.3kDa KDa

Description

CBX7 (Chromobox 7) is a Protein Coding gene. GO annotations related to this gene include chromatin binding and single-stranded RNA binding. An important paralog of this gene is CBX4.;

Immunogen

Purified recombinant fragment of human CBX7 (AA: 15-147) expressed in E. Coli.

Formulation

Purified antibody in PBS with 0.05% sodium azide

Application Note

ELISA: 1/10000; WB: 1/500 - 1/2000; ICC: 1/50 - 1/200;

Mouse Monoclonal Antibody to CBX7 - Additional Information

Gene ID 23492

Dilution

WB~~1:1000

ICC~~N/A

E~~N/A

Storage

Maintain refrigerated at 2-8°C for up to 6 months. For long term storage store at -20°C in small aliquots to prevent freeze-thaw cycles.

Precautions

Mouse Monoclonal Antibody to CBX7 is for research use only and not for use in diagnostic or therapeutic procedures.

Mouse Monoclonal Antibody to CBX7 - Protein Information

Name CBX7

Function

Component of a Polycomb group (PcG) multiprotein PRC1-like complex, a complex class required to maintain the transcriptionally repressive state of many genes, including Hox genes, throughout development. PcG PRC1 complex acts via chromatin remodeling and modification of histones; it mediates monoubiquitination of histone H2A 'Lys-119', rendering chromatin heritably changed in its expressibility. Promotes histone H3 trimethylation at 'Lys-9' (H3K9me3). Binds to trimethylated lysine residues in histones, and possibly also other proteins. Regulator of cellular lifespan by maintaining the repression of CDKN2A, but not by inducing telomerase activity.

Cellular Location

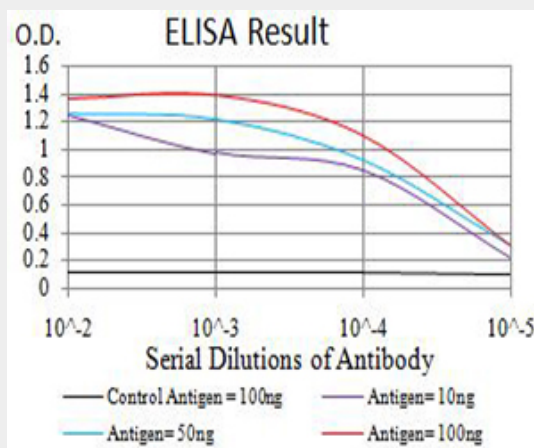
Nucleus

Mouse Monoclonal Antibody to CBX7 - Protocols

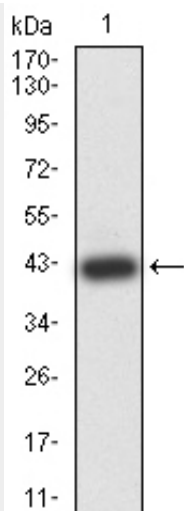
Provided below are standard protocols that you may find useful for product applications.

- [Western Blot](#)
- [Blocking Peptides](#)
- [Dot Blot](#)
- [Immunohistochemistry](#)
- [Immunofluorescence](#)
- [Immunoprecipitation](#)
- [Flow Cytometry](#)
- [Cell Culture](#)

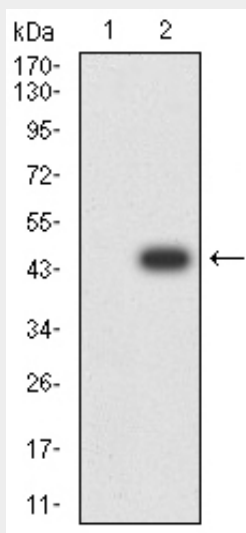
Mouse Monoclonal Antibody to CBX7 - Images



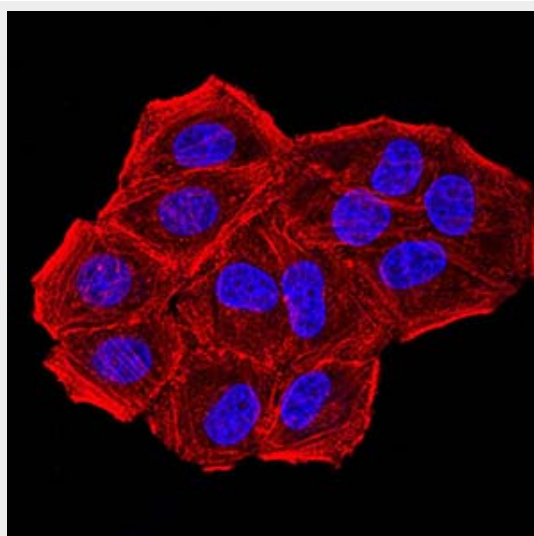
Black line: Control Antigen (100 ng); Purple line: Antigen (10ng); Blue line: Antigen (50 ng); Red line: Antigen (100 ng)



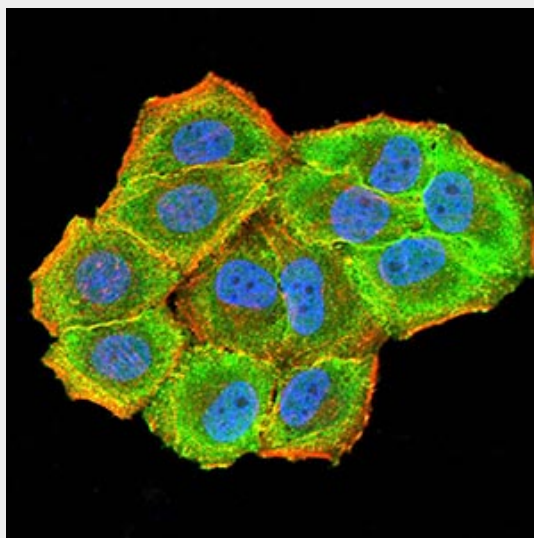
Western blot analysis using CBX7 mAb against human CBX7 (AA: 15-147) recombinant protein. (Expected MW is 41.3 kDa)



Western blot analysis using CBX7 mAb against HEK293 (1) and CBX7 (AA: 15-147)-hIgGFc transfected HEK293 (2) cell lysate.



Immunofluorescence analysis of Hela cells using CBX7 mouse mAb. Blue: DRAQ5 fluorescent DNA dye. Red: Actin filaments have been labeled with Alexa Fluor- 555 phalloidin.



Immunofluorescence analysis of Hela cells using CBX7 mouse mAb (green). Blue: DRAQ5 fluorescent DNA dye. Red: Actin filaments have been labeled with Alexa Fluor- 555 phalloidin. Secondary antibody from Fisher,

Mouse Monoclonal Antibody to CBX7 - References

1.PLoS One. 2014 May 27;9(5):e98295. ; 2.Eur J Cancer. 2010 Aug;46(12):2304-13.;