

**BCL2L10**  
**Purified Mouse Monoclonal Antibody**  
**Catalog # AO2542a****Specification**

---

**BCL2L10 - Product Information**

Application	WB, IHC, ICC, E
Primary Accession	<a href="#">Q9HD36</a>
Reactivity	Human
Host	Mouse
Clonality	Monoclonal
Isotype	Mouse IgG1
Calculated MW	22kDa KDa
<b>Immunogen</b>	

Purified recombinant fragment of human BCL2L10 (AA: 31-186) expressed in E. Coli.

**Formulation**

Purified antibody in PBS with 0.05% sodium azide

**BCL2L10 - Additional Information**

**Gene ID** 10017

**Other Names**

Boo; Diva; BCL-B; bcl2-L-10

**Dilution**

WB~~ 1/500 - 1/2000

IHC~~ 1/200 - 1/1000

ICC~~ 1/200 - 1/1000

E~~ 1/10000

**Storage**

Maintain refrigerated at 2-8°C for up to 6 months. For long term storage store at -20°C in small aliquots to prevent freeze-thaw cycles.

**Precautions**

BCL2L10 is for research use only and not for use in diagnostic or therapeutic procedures.

**BCL2L10 - Protein Information**

**Name** BCL2L10 {ECO:0000303|PubMed:17532299}

**Function**

Promotes cell survival by suppressing apoptosis induced by BAX but not BAK (PubMed:<a href="http://www.uniprot.org/citations/11278245" target="\_blank">11278245</a>, PubMed:<a href="http://www.uniprot.org/citations/11689480" target="\_blank">11689480</a>). Increases

binding of AHCYL1/IRBIT to ITPR1 (PubMed:<a href="http://www.uniprot.org/citations/27995898" target="\_blank">27995898</a>). Reduces ITPR1-mediated calcium release from the endoplasmic reticulum cooperatively with AHCYL1/IRBIT under normal cellular conditions (PubMed:<a href="http://www.uniprot.org/citations/27995898" target="\_blank">27995898</a>). Under apoptotic stress conditions, dissociates from ITPR1 and is displaced from mitochondria-associated endoplasmic reticulum membranes, leading to increased  $\text{Ca}^{2+}$  transfer to mitochondria which promotes apoptosis (PubMed:<a href="http://www.uniprot.org/citations/27995898" target="\_blank">27995898</a>). Required for the correct formation of the microtubule organizing center during oocyte cell division, potentially via regulation of protein abundance and localization of other microtubule organizing center components such as AURKA and TPX2 (By similarity).

### Cellular Location

Mitochondrion. Nucleus membrane. Endoplasmic reticulum. Cytoplasm, cytoskeleton, spindle {ECO:0000250|UniProtKB:Q9Z0F3}. Note=Localizes to mitochondria-associated endoplasmic reticulum membranes (MAMs) (PubMed:27995898). Localization to MAMs is greatly reduced under apoptotic stress conditions (PubMed:27995898)

### Tissue Location

Widely expressed in adult tissues. Preferentially expressed in lung, liver and kidney.

## BCL2L10 - Protocols

Provided below are standard protocols that you may find useful for product applications.

- [Western Blot](#)
- [Blocking Peptides](#)
- [Dot Blot](#)
- [Immunohistochemistry](#)
- [Immunofluorescence](#)
- [Immunoprecipitation](#)
- [Flow Cytometry](#)
- [Cell Culture](#)

## BCL2L10 - Images

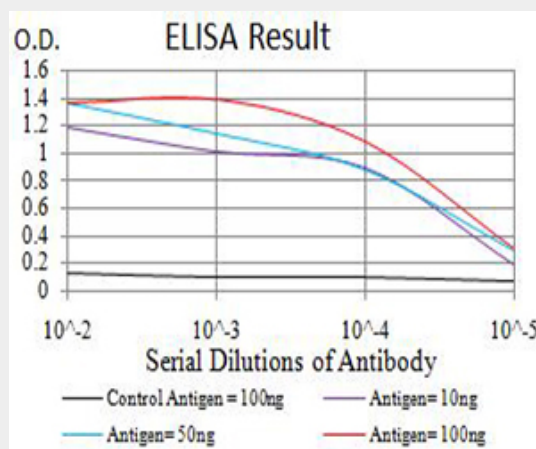


Figure 1: Black line: Control Antigen (100 ng); Purple line: Antigen (10ng); Blue line: Antigen (50 ng); Red line: Antigen (100 ng)

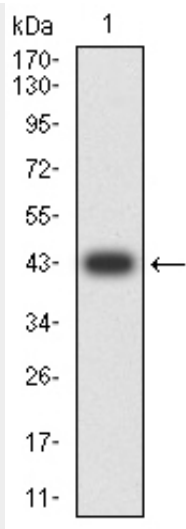


Figure 2: Western blot analysis using BCL2L10 mAb against human BCL2L10 (AA: 31-186) recombinant protein. (Expected MW is 43.1 kDa)

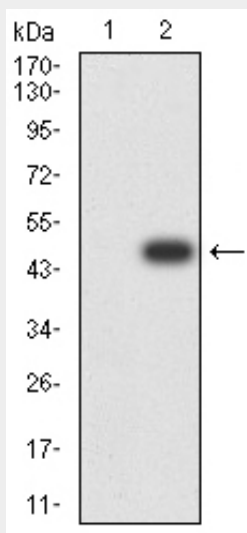


Figure 3: Western blot analysis using BCL2L10 mAb against HEK293 (1) and BCL2L10 (AA: 31-186)-hlgGfc transfected HEK293 (2) cell lysate.

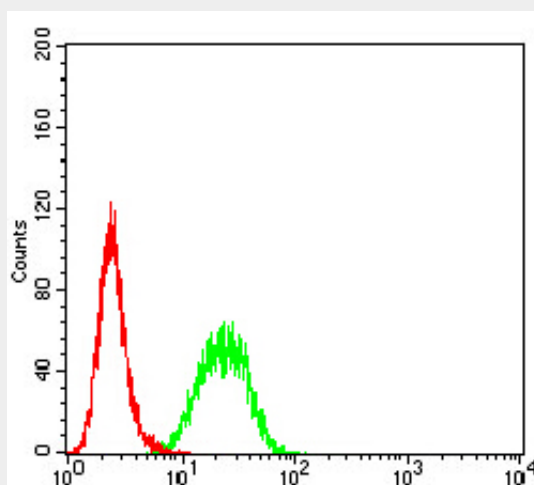


Figure 5: Flow cytometric analysis of Hela cells using BCL2L10 mouse mAb (green) and negative

control (red).

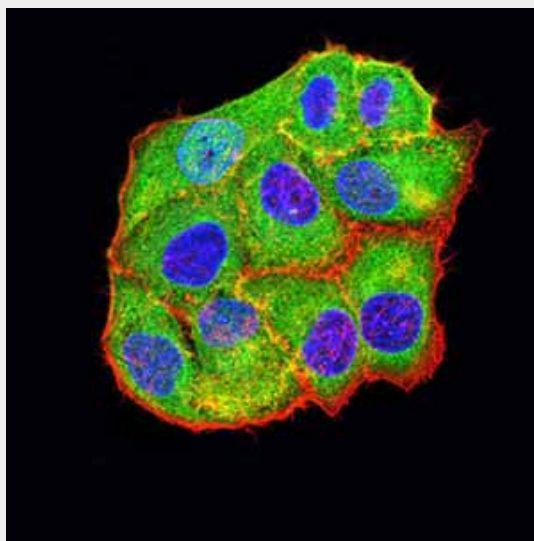


Figure 4: Immunofluorescence analysis of Hela cells using BCL2L10 mouse mAb (green). Blue: DRAQ5 fluorescent DNA dye. Red: Actin filaments have been labeled with Alexa Fluor-555 phalloidin. Secondary antibody from Fisher (Cat#: 35503)

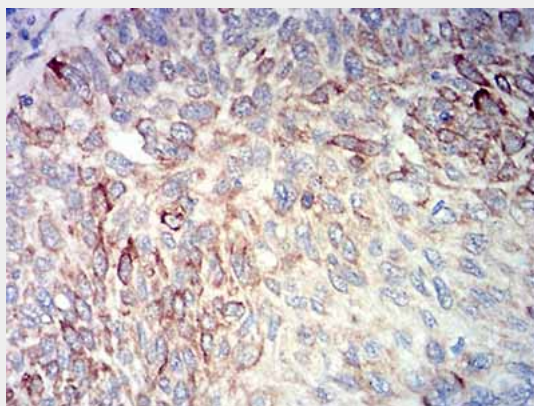


Figure 6: Immunohistochemical analysis of paraffin-embedded lung cancer tissues using BCL2L10 mouse mAb with DAB staining.

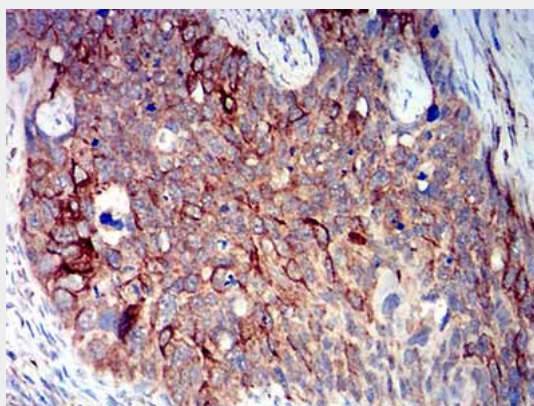


Figure 7: Immunohistochemical analysis of paraffin-embedded cervical cancer tissues using BCL2L10 mouse mAb with DAB staining.

#### **BCL2L10 - References**

1.Hum Reprod. 2013 Mar;28(3):729-39. 2.Oncotarget. 2012 Apr;3(4):490-501.