

BCL11B
Purified Mouse Monoclonal Antibody
Catalog # AO2547a**Specification**

BCL11B - Product Information

Application	WB, IHC, ICC, E
Primary Accession	O9C0K0
Reactivity	Human
Host	Mouse
Clonality	Monoclonal
Isotype	Mouse IgG1
Calculated MW	95.5kDa KDa

Immunogen

Purified recombinant fragment of human BCL11B (AA: 1-150) expressed in E. Coli.

Formulation

Purified antibody in PBS with 0.05% sodium azide

BCL11B - Additional Information

Gene ID 64919

Other Names

ATL1; RIT1; CTIP2; IMD49; CTIP-2; ZNF856B; ATL1-beta; ATL1-alpha; ATL1-delta; ATL1-gamma; hRIT1-alpha

Dilution

WB~~ 1/500 - 1/2000
IHC~~1:100~500
ICC~~N/A
E~~ 1/10000

Storage

Maintain refrigerated at 2-8°C for up to 6 months. For long term storage store at -20°C in small aliquots to prevent freeze-thaw cycles.

Precautions

BCL11B is for research use only and not for use in diagnostic or therapeutic procedures.

BCL11B - Protein Information

Name BCL11B

Synonyms CTIP2, RIT1

Function

Key regulator of both differentiation and survival of T- lymphocytes during thymocyte development in mammals. Essential in controlling the responsiveness of hematopoietic stem cells to chemotactic signals by modulating the expression of the receptors CCR7 and CCR9, which direct the movement of progenitor cells from the bone marrow to the thymus (PubMed:27959755). Is a regulator of IL2 promoter and enhances IL2 expression in activated CD4(+) T-lymphocytes (PubMed:16809611). Tumor-suppressor that represses transcription through direct, TFCOUP2-independent binding to a GC-rich response element (By similarity). May also function in the P53-signaling pathway (By similarity).

Cellular Location

Nucleus.

Tissue Location

Highly expressed in brain and in malignant T-cell lines derived from patients with adult T-cell leukemia/lymphoma

BCL11B - Protocols

Provided below are standard protocols that you may find useful for product applications.

- [Western Blot](#)
- [Blocking Peptides](#)
- [Dot Blot](#)
- [Immunohistochemistry](#)
- [Immunofluorescence](#)
- [Immunoprecipitation](#)
- [Flow Cytometry](#)
- [Cell Culture](#)

BCL11B - Images

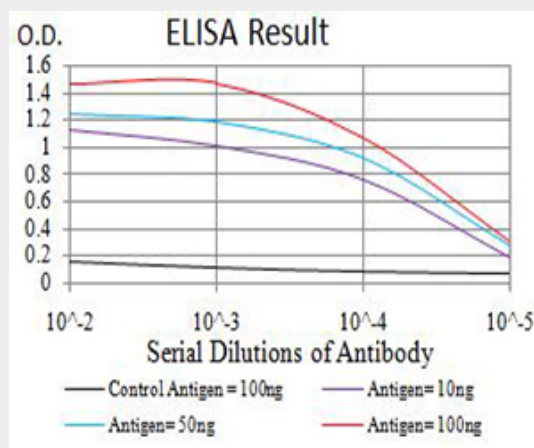


Figure 1:Black line: Control Antigen (100 ng);Purple line: Antigen (10ng); Blue line: Antigen (50 ng); Red line:Antigen (100 ng)

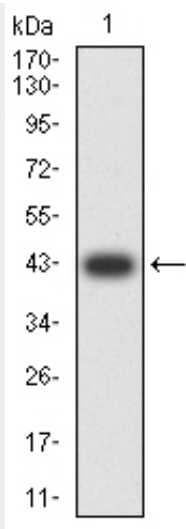


Figure 2: Western blot analysis using BCL11B mAb against human BCL11B (AA: 1-150) recombinant protein. (Expected MW is 42.3 kDa)

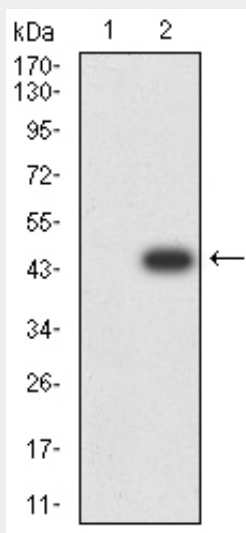


Figure 3: Western blot analysis using BCL11B mAb against HEK293 (1) and BCL11B (AA: 1-150)-hlgGfC transfected HEK293 (2) cell lysate.

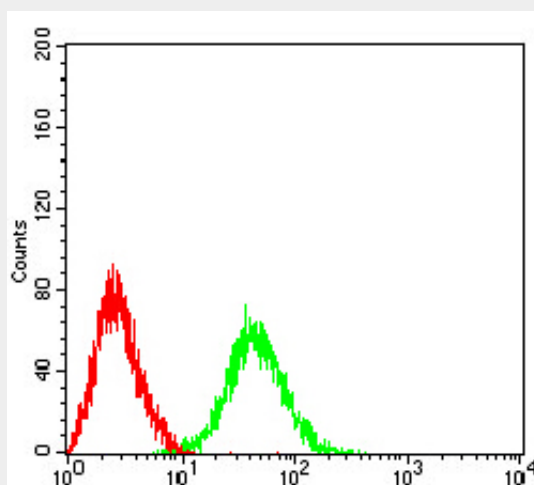


Figure 4: Flow cytometric analysis of BCL11B cells using HeLa mouse mAb (green) and negative

control (red).

BCL11B - References

1.J Immunol. 2014 Sep 1;193(5):2059-65. 2.PLoS One. 2013;8(1):e55147.