

**BCL2L2**  
**Purified Mouse Monoclonal Antibody**  
**Catalog # AO2612a****Specification**

---

**BCL2L2 - Product Information**

Application	WB, IHC, ICC, E
Primary Accession	<a href="#">Q92843</a>
Reactivity	Human
Host	Mouse
Clonality	Monoclonal
Isotype	Mouse IgG2a
Calculated MW	20.7kDa KDa

**Immunogen**

Purified recombinant fragment of human BCL2L2 (AA: 6-118) expressed in E. Coli.

**Formulation**

Purified antibody in PBS with 0.05% sodium azide

**BCL2L2 - Additional Information**

**Gene ID** 599

**Other Names**

BCLW; BCL-W; PPP1R51; BCL2-L-2

**Dilution**

WB~~ 1/500 - 1/2000

IHC~~ 1/200 - 1/1000

ICC~~N/A

E~~ 1/10000

**Storage**

Maintain refrigerated at 2-8°C for up to 6 months. For long term storage store at -20°C in small aliquots to prevent freeze-thaw cycles.

**Precautions**

BCL2L2 is for research use only and not for use in diagnostic or therapeutic procedures.

**BCL2L2 - Protein Information**

**Name** BCL2L2

**Synonyms** BCLW, KIAA0271

**Function**

Promotes cell survival. Blocks dexamethasone-induced apoptosis. Mediates survival of postmitotic

Sertoli cells by suppressing death-promoting activity of BAX.

#### Cellular Location

Mitochondrion membrane; Peripheral membrane protein. Note=Loosely associated with the mitochondrial membrane in healthy cells. During apoptosis, tightly bound to the membrane

#### Tissue Location

Expressed (at protein level) in a wide range of tissues with highest levels in brain, spinal cord, testis, pancreas, heart, spleen and mammary glands. Moderate levels found in thymus, ovary and small intestine. Not detected in salivary gland, muscle or liver. Also expressed in cell lines of myeloid, fibroblast and epithelial origin. Not detected in most lymphoid cell lines

### BCL2L2 - Protocols

Provided below are standard protocols that you may find useful for product applications.

- [Western Blot](#)
- [Blocking Peptides](#)
- [Dot Blot](#)
- [Immunohistochemistry](#)
- [Immunofluorescence](#)
- [Immunoprecipitation](#)
- [Flow Cytometry](#)
- [Cell Culture](#)

### BCL2L2 - Images

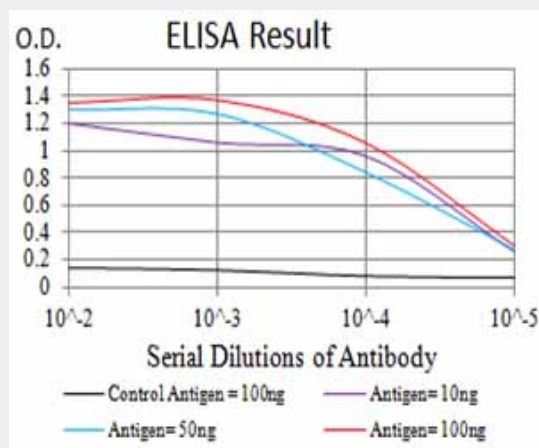


Figure 1: Black line: Control Antigen (100 ng); Purple line: Antigen (10ng); Blue line: Antigen (50 ng); Red line: Antigen (100 ng)

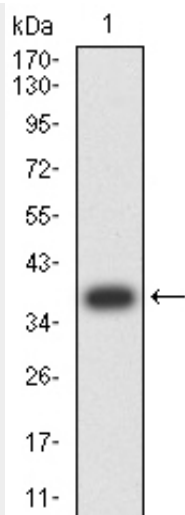


Figure 2: Western blot analysis using BCL2L2 mAb against human BCL2L2 (AA: 6-118) recombinant protein. (Expected MW is 38.2 kDa)

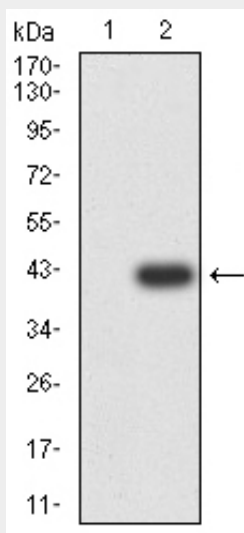


Figure 3: Western blot analysis using BCL2L2 mAb against HEK293 (1) and BCL2L2 (AA: 6-118)-hlgGfC transfected HEK293 (2) cell lysate.

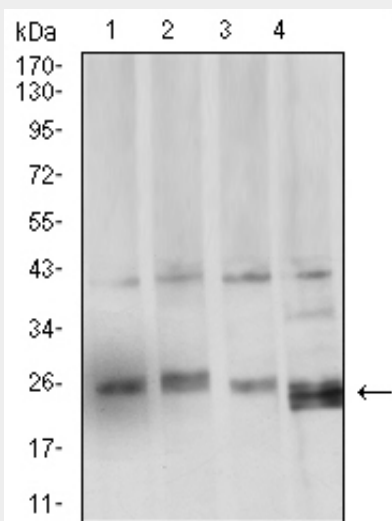


Figure 4: Western blot analysis using BCL2L2 mouse mAb against HCT116 (1), LOVO (2), SW480 (3), and HL-60 (4) cell lysate.

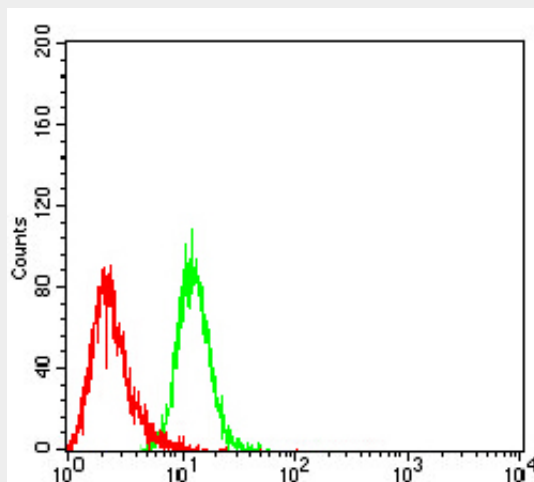


Figure 6: Flow cytometric analysis of Hela cells using BCL2L2 mouse mAb (green) and negative control (red).

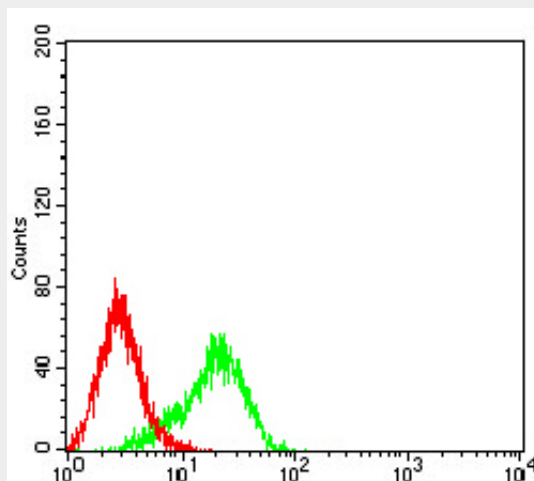


Figure 7: Flow cytometric analysis of K562 cells using BCL2L2 mouse mAb (green) and negative control (red).

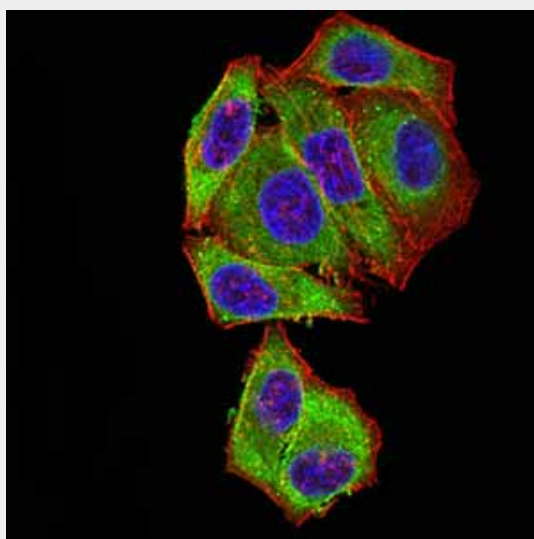


Figure 5:Immunofluorescence analysis of Hela cells using BCL2L2 mouse mAb (green). Blue: DRAQ5 fluorescent DNA dye. Red: Actin filaments have been labeled with Alexa Fluor- 555 phalloidin. Secondary antibody from Fisher (Cat#: 35503)

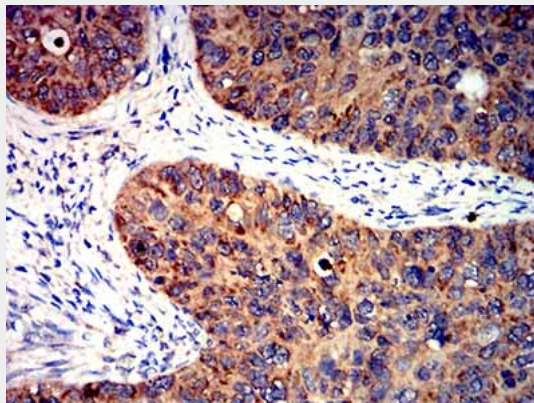


Figure 8:Immunohistochemical analysis of paraffin-embedded cervical cancer tissues using BCL2L2 mouse mAb with DAB staining.

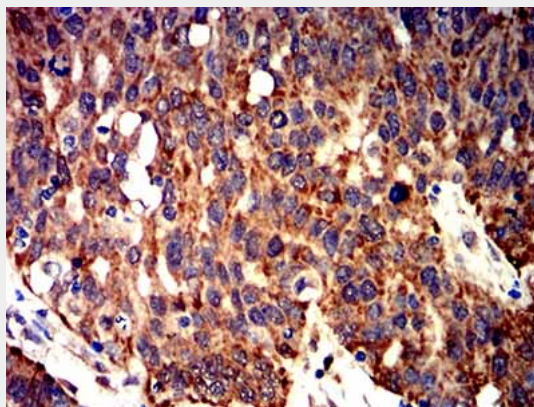


Figure 9:Immunohistochemical analysis of paraffin-embedded ovarian cancer tissues using BCL2L2 mouse mAb with DAB staining.

#### **BCL2L2 - References**

- 1.Med Sci Monit. 2016 Nov 1;22:4139-4145.
- 2.Food Chem Toxicol. 2010 Aug-Sep;48(8-9):2259-64.