

CHRNA10
Purified Mouse Monoclonal Antibody
Catalog # AO2619a**Specification**

CHRNA10 - Product Information

Application	E, WB, FCM
Primary Accession	O9GZZ6
Reactivity	Human
Host	Mouse
Clonality	Monoclonal
Isotype	Mouse IgG1
Calculated MW	49.7kDa KDa

Immunogen

Purified recombinant fragment of human CHRNA10 (AA: extra 25-237) expressed in E. Coli.

Formulation

Purified antibody in PBS with 0.05% sodium azide

CHRNA10 - Additional Information

Gene ID 57053

Dilution

E~~ 1/10000
WB~~ 1/500 - 1/2000
FCM~~1/200 - 1/400

Storage

Maintain refrigerated at 2-8°C for up to 6 months. For long term storage store at -20°C in small aliquots to prevent freeze-thaw cycles.

Precautions

CHRNA10 is for research use only and not for use in diagnostic or therapeutic procedures.

CHRNA10 - Protein Information

Name CHRNA10

Synonyms NACHRA10

Function

Ionotropic receptor with a probable role in the modulation of auditory stimuli. Agonist binding may induce an extensive change in conformation that affects all subunits and leads to opening of an ion- conducting channel across the plasma membrane. The channel is permeable to a range of divalent cations including calcium, the influx of which may activate a potassium current which hyperpolarizes the cell membrane. In the ear, this may lead to a reduction in basilar membrane

motion, altering the activity of auditory nerve fibers and reducing the range of dynamic hearing. This may protect against acoustic trauma.

Cellular Location

Postsynaptic cell membrane; Multi-pass membrane protein. Cell membrane; Multi-pass membrane protein

Tissue Location

Expressed in inner-ear tissue, tonsil, immortalized B-cells, cultured T-cells and peripheral blood lymphocytes

CHRNA10 - Protocols

Provided below are standard protocols that you may find useful for product applications.

- [Western Blot](#)
- [Blocking Peptides](#)
- [Dot Blot](#)
- [Immunohistochemistry](#)
- [Immunofluorescence](#)
- [Immunoprecipitation](#)
- [Flow Cytometry](#)
- [Cell Culture](#)

CHRNA10 - Images

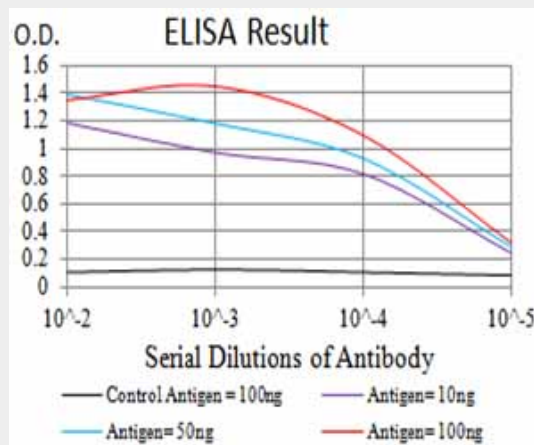


Figure 1: Black line: Control Antigen (100 ng); Purple line: Antigen (10ng); Blue line: Antigen (50 ng); Red line: Antigen (100 ng)

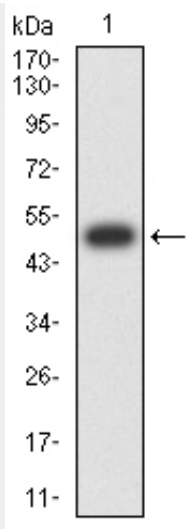


Figure 2: Western blot analysis using CHRNA10 mAb against human CHRNA10 (AA: extra 25-237) recombinant protein. (Expected MW is 50 kDa)

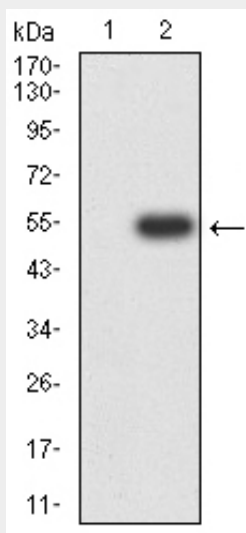


Figure 3: Western blot analysis using CHRNA10 mAb against HEK293 (1) and CHRNA10 (AA: extra 25-237)-hlgGfc transfected HEK293 (2) cell lysate.

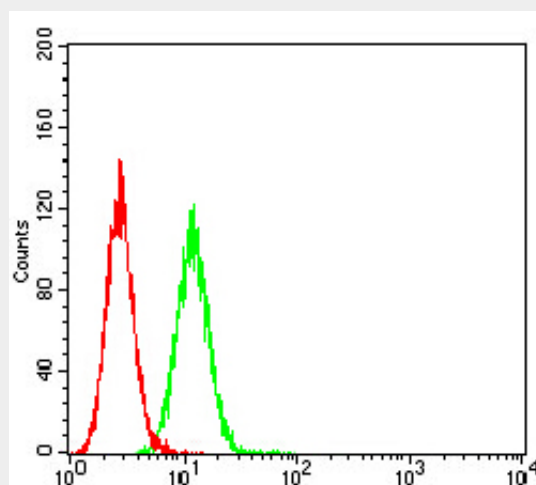


Figure 4: Flow cytometric analysis of HeLa cells using CHRNA10 mouse mAb (green) and negative

control (red).

CHRNA10 - References

1.J Neurochem. 2012 Sep;122(6):1137-44.2.Genes Brain Behav. 2010 Oct;9(7):741-50.