

ASF1A
Purified Mouse Monoclonal Antibody
Catalog # AO2630a

Specification

ASF1A - Product Information

Application	WB, IHC, ICC, E
Primary Accession	O9Y294
Reactivity	Human
Host	Mouse
Clonality	Monoclonal
Isotype	Mouse IgG1
Calculated MW	23kDa KDa

Immunogen

Purified recombinant fragment of human ASF1A (AA: 1-204) expressed in E. Coli.

Formulation

Purified antibody in PBS with 0.05% sodium azide

ASF1A - Additional Information

Gene ID 25842

Other Names

CIA; CGI-98; HSPC146

Dilution

WB~~ 1/500 - 1/2000

IHC~~1:100~500

ICC~~N/A

E~~ 1/10000

Storage

Maintain refrigerated at 2-8°C for up to 6 months. For long term storage store at -20°C in small aliquots to prevent freeze-thaw cycles.

Precautions

ASF1A is for research use only and not for use in diagnostic or therapeutic procedures.

ASF1A - Protein Information

Name ASF1A {ECO:0000303|PubMed:10759893, ECO:0000312|HGNC:HGNC:20995}

Function

Histone chaperone that facilitates histone deposition and histone exchange and removal during nucleosome assembly and disassembly (PubMed:10759893, PubMed:10759893)

<http://www.uniprot.org/citations/11897662> target="_blank">11897662, PubMed:12842904, PubMed:14718166, PubMed:15664198, PubMed:16151251, PubMed:21454524). Cooperates with chromatin assembly factor 1 (CAF-1) to promote replication-dependent chromatin assembly and with HIRA to promote replication-independent chromatin assembly (PubMed:11897662, PubMed:14718166, PubMed:15664198). Promotes homologous recombination-mediated repair of double-strand breaks (DSBs) at stalled or collapsed replication forks: acts by mediating histone replacement at DSBs, leading to recruitment of the MMS22L-TONSL complex and subsequent loading of RAD51 (PubMed:29478807). Also involved in the nuclear import of the histone H3-H4 dimer together with importin-4 (IPO4): specifically recognizes and binds newly synthesized histones with the monomethylation of H3 'Lys-9' and acetylation at 'Lys-14' (H3K9me1K14ac) marks, and diacetylation at 'Lys-5' and 'Lys-12' of H4 (H4K5K12ac) marks in the cytosol (PubMed:21454524, PubMed:29408485). Required for the formation of senescence-associated heterochromatin foci (SAHF) and efficient senescence-associated cell cycle exit (PubMed:15621527).

Cellular Location

Nucleus. Chromosome

Tissue Location

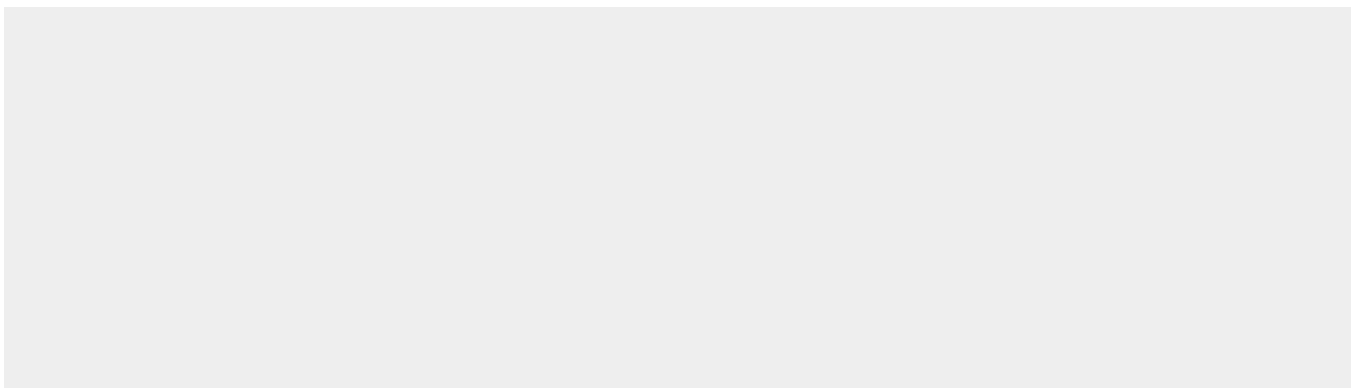
Ubiquitously expressed.

ASF1A - Protocols

Provided below are standard protocols that you may find useful for product applications.

- [Western Blot](#)
- [Blocking Peptides](#)
- [Dot Blot](#)
- [Immunohistochemistry](#)
- [Immunofluorescence](#)
- [Immunoprecipitation](#)
- [Flow Cytometry](#)
- [Cell Culture](#)

ASF1A - Images



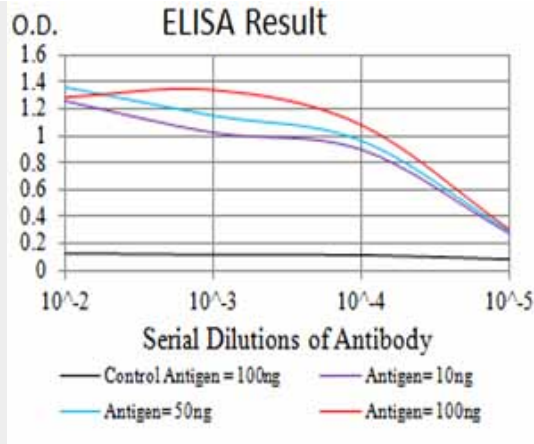


Figure 1: Black line: Control Antigen (100 ng); Purple line: Antigen (10ng); Blue line: Antigen (50 ng); Red line: Antigen (100 ng)

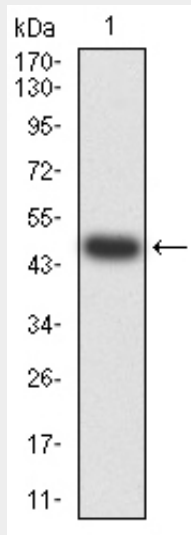


Figure 2: Western blot analysis using ASF1A mAb against human ASF1A (AA: 1-204) recombinant protein. (Expected MW is 48.9 kDa)

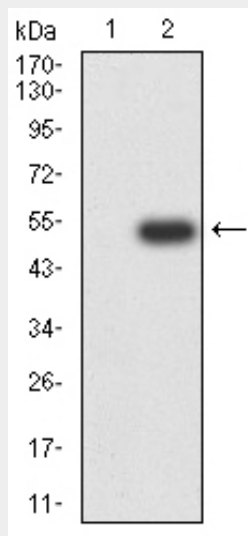


Figure 3: Western blot analysis using ASF1A mAb against HEK293 (1) and ASF1A (AA: 1-204)-hlgGfc transfected HEK293 (2) cell lysate.

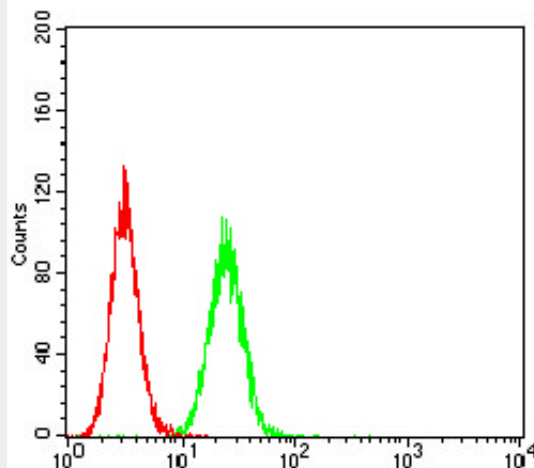


Figure 4:Flow cytometric analysis of Hela cells using ASF1A mouse mAb (green) and negative control (red).

ASF1A - References

1.Science. 2014 Aug 15;345(6198):822-5. 2.PLoS One. 2012;7(1):e27759.