

ADAP1
Purified Mouse Monoclonal Antibody
Catalog # AO2631a**Specification**

ADAP1 - Product Information

Application	WB, IHC, ICC, E
Primary Accession	O75689
Reactivity	Human, Rat
Host	Mouse
Clonality	Monoclonal
Isotype	Mouse IgG1
Calculated MW	43.4kDa KDa

Immunogen

Purified recombinant fragment of human ADAP1 (AA: 240-370) expressed in E. Coli.

Formulation

Purified antibody in PBS with 0.05% sodium azide

ADAP1 - Additional Information

Gene ID 11033

Other Names

GCS1L; CENTA1; P42ip4

Dilution

WB~~ 1/500 - 1/2000

IHC~~1:100~500

ICC~~N/A

E~~ 1/10000

Storage

Maintain refrigerated at 2-8°C for up to 6 months. For long term storage store at -20°C in small aliquots to prevent freeze-thaw cycles.

Precautions

ADAP1 is for research use only and not for use in diagnostic or therapeutic procedures.

ADAP1 - Protein Information

Name ADAP1

Synonyms CENTA1

Function

GTPase-activating protein for the ADP ribosylation factor family (Probable). Binds

phosphatidylinositol 3,4,5-trisphosphate (PtdInsP3) and inositol 1,3,4,5-tetrakisphosphate (InsP4). Regulates the incorporation of CD63 and CD9 into multivesicular bodies (PubMed:38682696).

Cellular Location

Nucleus. Cytoplasm. Note=Recruited to the plasma membrane upon epidermal growth factor-dependent activation of phosphatidylinositol 4,5-diphosphate (PtdInsP2) 3-kinase

Tissue Location

Expressed at highest levels in brain and at lower levels in peripheral blood leukocytes.

ADAP1 - Protocols

Provided below are standard protocols that you may find useful for product applications.

- [Western Blot](#)
- [Blocking Peptides](#)
- [Dot Blot](#)
- [Immunohistochemistry](#)
- [Immunofluorescence](#)
- [Immunoprecipitation](#)
- [Flow Cytometry](#)
- [Cell Culture](#)

ADAP1 - Images

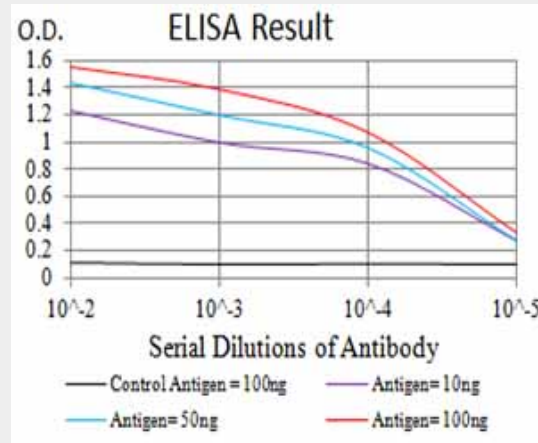


Figure 1:Black line: Control Antigen (100 ng);Purple line: Antigen (10ng); Blue line: Antigen (50 ng); Red line:Antigen (100 ng)

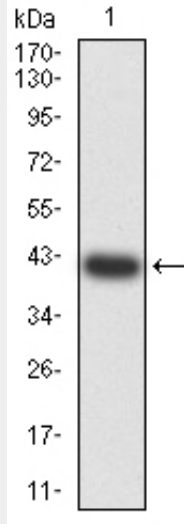


Figure 2:Western blot analysis using ADAP1 mAb against human ADAP1 (AA: 240-370) recombinant protein. (Expected MW is 41.6 kDa)

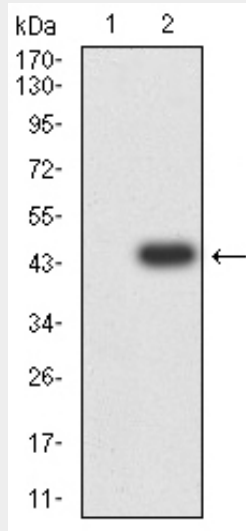


Figure 3:Western blot analysis using ADAP1 mAb against HEK293 (1) and ADAP1 (AA: 240-370)-hlgGfc transfected HEK293 (2) cell lysate.

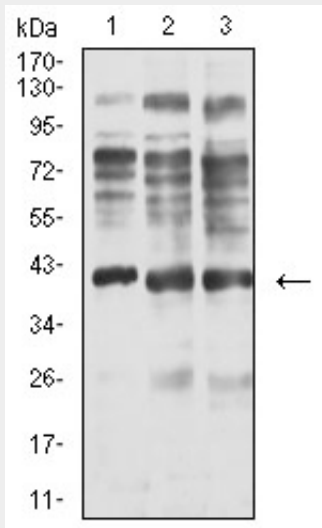


Figure 4:Western blot analysis using ADAP1 mouse mAb against C6 (1), A549 (2), and HepG2 (3) cell lysate.

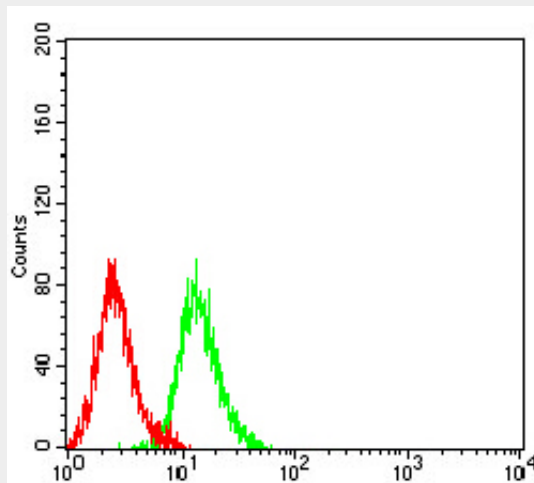


Figure 5:Flow cytometric analysis of K562 cells using ADAP1 mouse mAb (green) and negative control (red).

ADAP1 - References

1.Biol Chem. 2014 Nov 1;395(11):1321-40.2.Neurochem Int. 2011 Nov;59(6):936-44.