

CD209
Purified Mouse Monoclonal Antibody
Catalog # AO2686a**Specification**

CD209 - Product Information

Application	E, WB, FCM
Primary Accession	O9NNX6
Reactivity	Human
Host	Mouse
Clonality	Monoclonal
Isotype	Mouse IgG1
Calculated MW	45.8kDa KDa

Immunogen

Purified recombinant fragment of human CD209 (AA: extra 270-404) expressed in E. Coli.

Formulation

Purified antibody in PBS with 0.05% sodium azide

CD209 - Additional Information

Gene ID 30835

Other Names

CDSIGN; CLEC4L; DC-SIGN; DC-SIGN1

Dilution

E~~ 1/10000
WB~~ 1/500 - 1/2000
FCM~~1/200 - 1/400

Storage

Maintain refrigerated at 2-8°C for up to 6 months. For long term storage store at -20°C in small aliquots to prevent freeze-thaw cycles.

Precautions

CD209 is for research use only and not for use in diagnostic or therapeutic procedures.

CD209 - Protein Information

Name CD209

Synonyms CLEC4L

Function

Pathogen-recognition receptor expressed on the surface of immature dendritic cells (DCs) and involved in initiation of primary immune response. Thought to mediate the endocytosis of

pathogens which are subsequently degraded in lysosomal compartments. The receptor returns to the cell membrane surface and the pathogen-derived antigens are presented to resting T-cells via MHC class II proteins to initiate the adaptive immune response.

Cellular Location

[Isoform 1]: Cell membrane; Single- pass type II membrane protein [Isoform 3]: Cell membrane; Single- pass type II membrane protein [Isoform 5]: Cell membrane; Single- pass type II membrane protein [Isoform 7]: Secreted. [Isoform 9]: Secreted. [Isoform 11]: Secreted.

Tissue Location

Predominantly expressed in dendritic cells and in DC-residing tissues. Also found in placental macrophages, endothelial cells of placental vascular channels, peripheral blood mononuclear cells, and THP-1 monocytes.

CD209 - Protocols

Provided below are standard protocols that you may find useful for product applications.

- [Western Blot](#)
- [Blocking Peptides](#)
- [Dot Blot](#)
- [Immunohistochemistry](#)
- [Immunofluorescence](#)
- [Immunoprecipitation](#)
- [Flow Cytometry](#)
- [Cell Culture](#)

CD209 - Images

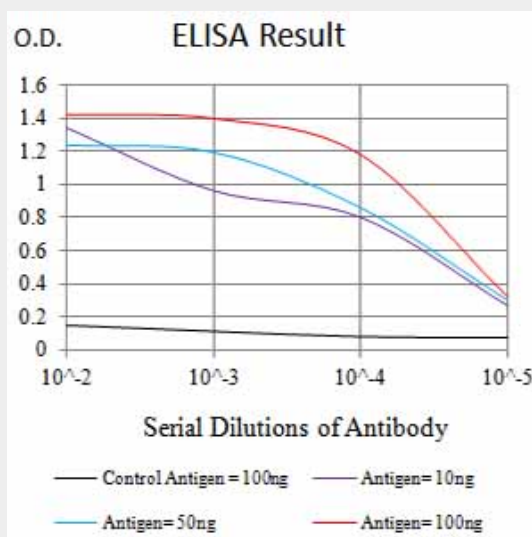


Figure 1: Black line: Control Antigen (100 ng); Purple line: Antigen (10ng); Blue line: Antigen (50 ng); Red line: Antigen (100 ng)

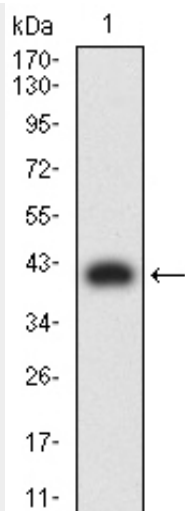


Figure 2: Western blot analysis using CD29 mAb against human CD29 (AA: extra 270-404) recombinant protein. (Expected MW is 41.1 kDa)

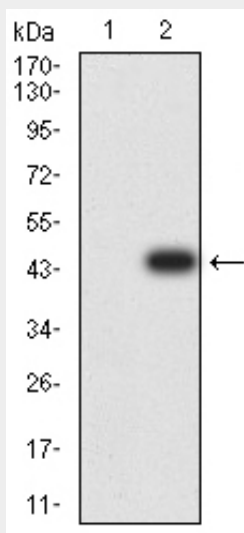


Figure 3: Western blot analysis using CD29 mAb against HEK293 (1) and CD29 (AA: extra 270-404)-hlgGfC transfected HEK293 (2) cell lysate.

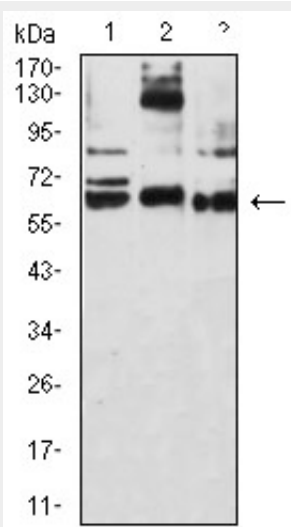


Figure 4: Western blot analysis using CD209 mouse mAb against THP-1 (1), HL-60 (2), and A431 (3) cell lysate.

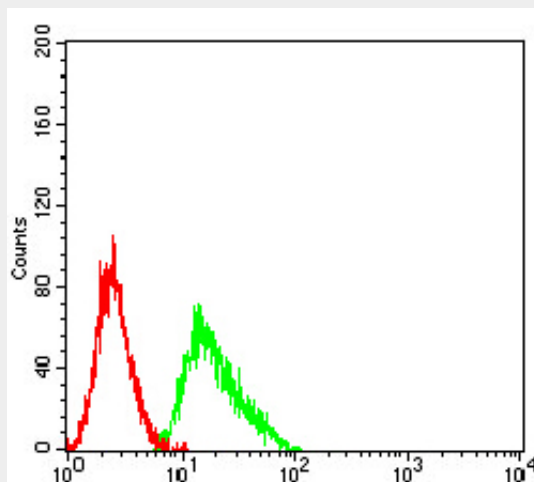


Figure 5: Flow cytometric analysis of Ramos cells using CD209 mouse mAb (green) and negative control (red).

CD209 - References

1. Blood. 2015 Oct 15;126(16):1911-20. 2. PLoS One. 2014 Aug 22;9(8):e105236.