

CD1B
Purified Mouse Monoclonal Antibody
Catalog # AO2748a

Specification

CD1B - Product Information

Application	WB, IHC, ICC, E
Primary Accession	P29016
Reactivity	Human
Host	Mouse
Clonality	Monoclonal
Isotype	Mouse IgG2b
Calculated MW	37kDa KDa

Immunogen

Purified recombinant fragment of human CD1B (AA: extra 18-303) expressed in E. Coli.

Formulation

Purified antibody in PBS with 0.05% sodium azide

CD1B - Additional Information

Gene ID 910

Other Names

R1; CD1; CD1A

Dilution

WB~~ 1/500 - 1/2000

IHC~~1:100~500

ICC~~N/A

E~~ 1/10000

Storage

Maintain refrigerated at 2-8°C for up to 6 months. For long term storage store at -20°C in small aliquots to prevent freeze-thaw cycles.

Precautions

CD1B is for research use only and not for use in diagnostic or therapeutic procedures.

CD1B - Protein Information

Name CD1B

Function

Antigen-presenting protein that binds self and non-self lipid and glycolipid antigens and presents them to T-cell receptors on natural killer T-cells.

Cellular Location

Cell membrane; Single-pass type I membrane protein. Endosome membrane; Single-pass type I membrane protein. Lysosome membrane; Single-pass type I membrane protein. Note=Subject to intracellular trafficking between the cell membrane, endosomes and lysosomes.

Tissue Location

Expressed on cortical thymocytes, on certain T-cell leukemias, and in various other tissues

CD1B - Protocols

Provided below are standard protocols that you may find useful for product applications.

- [Western Blot](#)
- [Blocking Peptides](#)
- [Dot Blot](#)
- [Immunohistochemistry](#)
- [Immunofluorescence](#)
- [Immunoprecipitation](#)
- [Flow Cytometry](#)
- [Cell Culture](#)

CD1B - Images

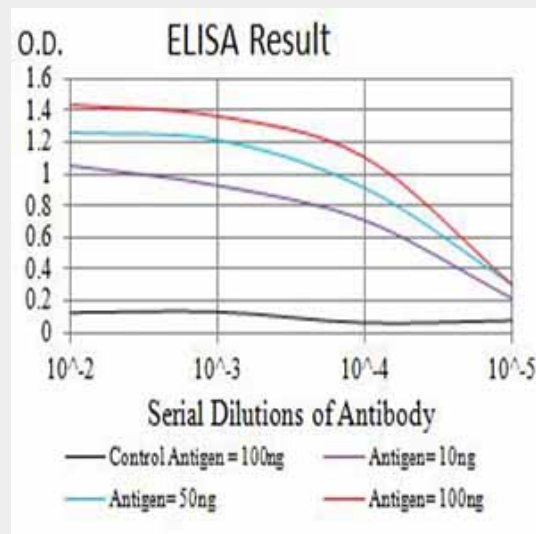


Figure 4: Black line: Control Antigen (100 ng); Purple line: Antigen (10ng); Blue line: Antigen (50 ng); Red line: Antigen (100 ng)

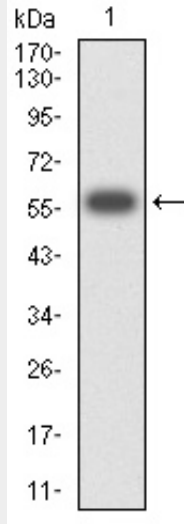


Figure 1:Western blot analysis using CD1B mAb against human CD1B (AA: extra 18-303) recombinant protein. (Expected MW is 57.1 kDa)

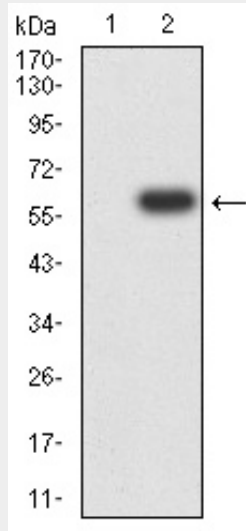


Figure 2:Western blot analysis using CD1B mAb against HEK293 (1) and CD1B (AA: extra 18-303)-hlgGfc transfected HEK293 (2) cell lysate.

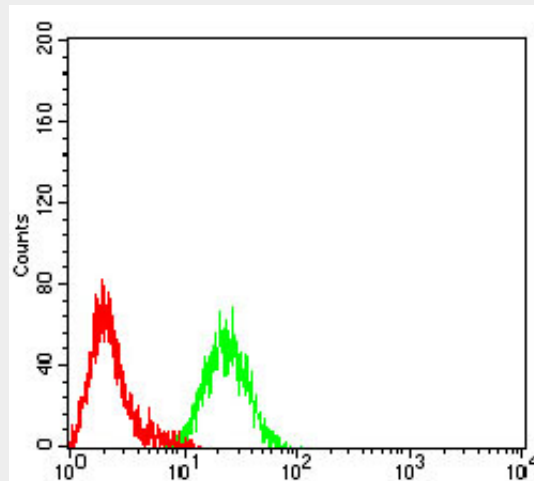


Figure 3:Flow cytometric analysis of Raji cells using CD1B mouse mAb (green) and negative

control (red).

CD1B - References

1.Proc Natl Acad Sci U S A. 2016 Jan 12;113(2):380-5.2.J Exp Med. 2011 Aug 29;208(9):1741-7.