

**RTL1 Antibody (C-term)**  
**Affinity Purified Rabbit Polyclonal Antibody (Pab)**  
**Catalog # AP10002b****Specification**

---

**RTL1 Antibody (C-term) - Product Information**

Application	WB,E
Primary Accession	<a href="#">A6NKG5</a>
Other Accession	<a href="#">XP_001716834.1</a>
Reactivity	Human
Host	Rabbit
Clonality	Polyclonal
Isotype	Rabbit IgG
Calculated MW	155048
Antigen Region	1330-1358

**RTL1 Antibody (C-term) - Additional Information****Gene ID** 388015**Other Names**

Retrotransposon-like protein 1, Mammalian retrotransposon derived protein 1, Paternally expressed gene 11 protein, Retrotransposon-derived protein PEG11, RTL1, MAR1, MART1, PEG11

**Target/Specificity**

This RTL1 antibody is generated from rabbits immunized with a KLH conjugated synthetic peptide between 1330-1358 amino acids from the C-terminal region of human RTL1.

**Dilution**

WB~~1:1000

E~~Use at an assay dependent concentration.

**Format**

Purified polyclonal antibody supplied in PBS with 0.09% (W/V) sodium azide. This antibody is purified through a protein A column, followed by peptide affinity purification.

**Storage**

Maintain refrigerated at 2-8°C for up to 2 weeks. For long term storage store at -20°C in small aliquots to prevent freeze-thaw cycles.

**Precautions**

RTL1 Antibody (C-term) is for research use only and not for use in diagnostic or therapeutic procedures.

**RTL1 Antibody (C-term) - Protein Information****Name** RTL1

**Synonyms** MAR1, MART1, PEG11

**Function** Plays an essential role in capillaries endothelial cells for the maintenance of feto-maternal interface and for development of the placenta.

**Cellular Location**

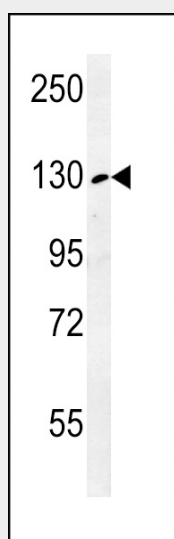
Membrane; Multi-pass membrane protein

**RTL1 Antibody (C-term) - Protocols**

Provided below are standard protocols that you may find useful for product applications.

- [Western Blot](#)
- [Blocking Peptides](#)
- [Dot Blot](#)
- [Immunohistochemistry](#)
- [Immunofluorescence](#)
- [Immunoprecipitation](#)
- [Flow Cytometry](#)
- [Cell Culture](#)

**RTL1 Antibody (C-term) - Images**



RTL1 Antibody (C-term) (Cat. #AP10002b) western blot analysis in K562 cell line lysates (35ug/lane). This demonstrates the RTL1 antibody detected the RTL1 protein (arrow).