

DPY19L2 Antibody (C-term)
Affinity Purified Rabbit Polyclonal Antibody (Pab)
Catalog # AP10014b

Specification

DPY19L2 Antibody (C-term) - Product Information

Application	WB,E
Primary Accession	Q6NUT2
Other Accession	P0CW70 , NP_776173.3
Reactivity	Human
Predicted	Mouse
Host	Rabbit
Clonality	Polyclonal
Isotype	Rabbit IgG
Calculated MW	87374
Antigen Region	642-671

DPY19L2 Antibody (C-term) - Additional Information

Gene ID 283417

Other Names

Probable C-mannosyltransferase DPY19L2, 241-, Dpy-19-like protein 2, Protein dpy-19 homolog 2, DPY19L2

Target/Specificity

This DPY19L2 antibody is generated from rabbits immunized with a KLH conjugated synthetic peptide between 642-671 amino acids from the C-terminal region of human DPY19L2.

Dilution

WB~~1:1000

E~~Use at an assay dependent concentration.

Format

Purified polyclonal antibody supplied in PBS with 0.09% (W/V) sodium azide. This antibody is purified through a protein A column, followed by peptide affinity purification.

Storage

Maintain refrigerated at 2-8°C for up to 2 weeks. For long term storage store at -20°C in small aliquots to prevent freeze-thaw cycles.

Precautions

DPY19L2 Antibody (C-term) is for research use only and not for use in diagnostic or therapeutic procedures.

DPY19L2 Antibody (C-term) - Protein Information

Name DPY19L2 ([HGNC:19414](#))

Function Probable C-mannosyltransferase that mediates C-mannosylation of tryptophan residues on target proteins.

Cellular Location

Nucleus inner membrane {ECO:0000250|UniProtKB:P0CW70}; Multi-pass membrane protein.

Note=Colocalizes with DPY19L2 at the inner nuclear membrane.

{ECO:0000250|UniProtKB:P0CW70}

Tissue Location

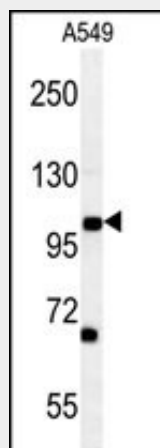
Widely expressed with high expression in testis. Not detectable in ejaculated sperm (at protein level)

DPY19L2 Antibody (C-term) - Protocols

Provided below are standard protocols that you may find useful for product applications.

- [Western Blot](#)
- [Blocking Peptides](#)
- [Dot Blot](#)
- [Immunohistochemistry](#)
- [Immunofluorescence](#)
- [Immunoprecipitation](#)
- [Flow Cytometry](#)
- [Cell Culture](#)

DPY19L2 Antibody (C-term) - Images



DPY19L2 Antibody (C-term) (Cat. #AP10014b) western blot analysis in A549 cell line lysates (35ug/lane). This demonstrates the DPY19L2 antibody detected the DPY19L2 protein (arrow).