

LCA5L Antibody (C-term)
Affinity Purified Rabbit Polyclonal Antibody (Pab)
Catalog # AP10017b

Specification

LCA5L Antibody (C-term) - Product Information

Application	IHC-P,E
Primary Accession	O95447
Other Accession	NP_689718.1
Reactivity	Human
Host	Rabbit
Clonality	Polyclonal
Isotype	Rabbit IgG
Antigen Region	380-408

LCA5L Antibody (C-term) - Additional Information

Gene ID 150082

Other Names

Lebercilin-like protein, Leber congenital amaurosis 5-like protein, LCA5L, C21orf13

Target/Specificity

This LCA5L antibody is generated from rabbits immunized with a KLH conjugated synthetic peptide between 380-408 amino acids from the C-terminal region of human LCA5L.

Dilution

IHC-P~~1:50~100

E~~Use at an assay dependent concentration.

Format

Purified polyclonal antibody supplied in PBS with 0.09% (W/V) sodium azide. This antibody is purified through a protein A column, followed by peptide affinity purification.

Storage

Maintain refrigerated at 2-8°C for up to 2 weeks. For long term storage store at -20°C in small aliquots to prevent freeze-thaw cycles.

Precautions

LCA5L Antibody (C-term) is for research use only and not for use in diagnostic or therapeutic procedures.

LCA5L Antibody (C-term) - Protein Information

Name LCA5L

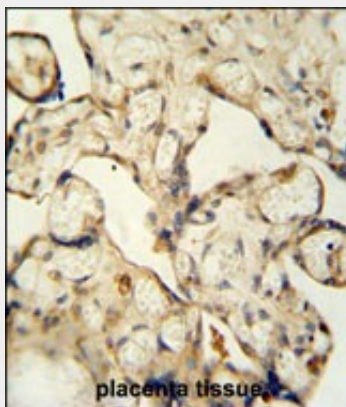
Synonyms C21orf13

LCA5L Antibody (C-term) - Protocols

Provided below are standard protocols that you may find useful for product applications.

- [Western Blot](#)
- [Blocking Peptides](#)
- [Dot Blot](#)
- [Immunohistochemistry](#)
- [Immunofluorescence](#)
- [Immunoprecipitation](#)
- [Flow Cytometry](#)
- [Cell Culture](#)

LCA5L Antibody (C-term) - Images



LCA5L antibody (C-term) (Cat. #AP10017b) immunohistochemistry analysis in formalin fixed and paraffin embedded human placenta tissue followed by peroxidase conjugation of the secondary antibody and DAB staining. This data demonstrates the use of the LCA5L antibody (C-term) for immunohistochemistry. Clinical relevance has not been evaluated.