

LEG1 Antibody (Center)
Affinity Purified Rabbit Polyclonal Antibody (Pab)
Catalog # AP10021c**Specification**

LEG1 Antibody (Center) - Product Information

Application	WB, IHC-P, FC,E
Primary Accession	Q6P5S2
Other Accession	NP_001010905.1
Reactivity	Human
Host	Rabbit
Clonality	Polyclonal
Isotype	Rabbit IgG
Antigen Region	205-233

LEG1 Antibody (Center) - Additional Information**Gene ID** 352999**Other Names**

UPF0762 protein C6orf58, C6orf58

Target/Specificity

This LEG1 antibody is generated from rabbits immunized with a KLH conjugated synthetic peptide between 205-233 amino acids from the Central region of human LEG1.

Dilution

WB~~1:1000

IHC-P~~1:50~100

FC~~1:10~50

E~~Use at an assay dependent concentration.

Format

Purified polyclonal antibody supplied in PBS with 0.09% (W/V) sodium azide. This antibody is purified through a protein A column, followed by peptide affinity purification.

Storage

Maintain refrigerated at 2-8°C for up to 2 weeks. For long term storage store at -20°C in small aliquots to prevent freeze-thaw cycles.

Precautions

LEG1 Antibody (Center) is for research use only and not for use in diagnostic or therapeutic procedures.

LEG1 Antibody (Center) - Protein Information**Name** LEG1 {ECO:0000250|UniProtKB:A5PF61, ECO:0000250|UniProtKB:Q4QRF7}

Function May be involved in early liver development.

Cellular Location

Secreted {ECO:0000250|UniProtKB:A5PF61, ECO:0000250|UniProtKB:Q4QRF7}

Tissue Location

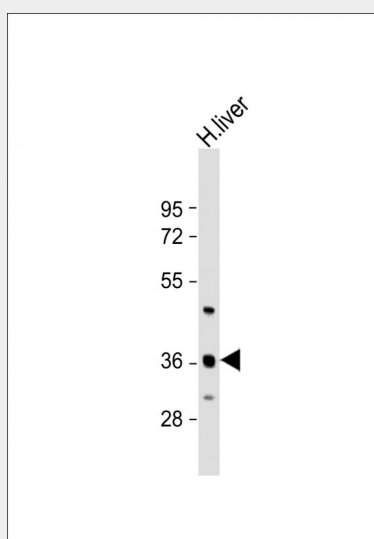
Detected in saliva and in hypomineralized dental enamel (at protein level).

LEG1 Antibody (Center) - Protocols

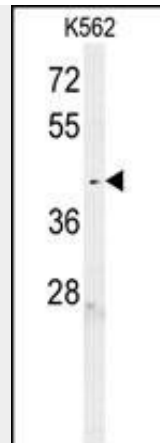
Provided below are standard protocols that you may find useful for product applications.

- [Western Blot](#)
- [Blocking Peptides](#)
- [Dot Blot](#)
- [Immunohistochemistry](#)
- [Immunofluorescence](#)
- [Immunoprecipitation](#)
- [Flow Cytometry](#)
- [Cell Culture](#)

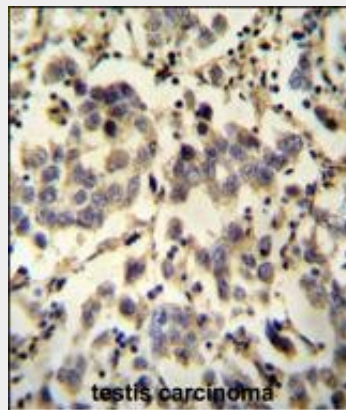
LEG1 Antibody (Center) - Images



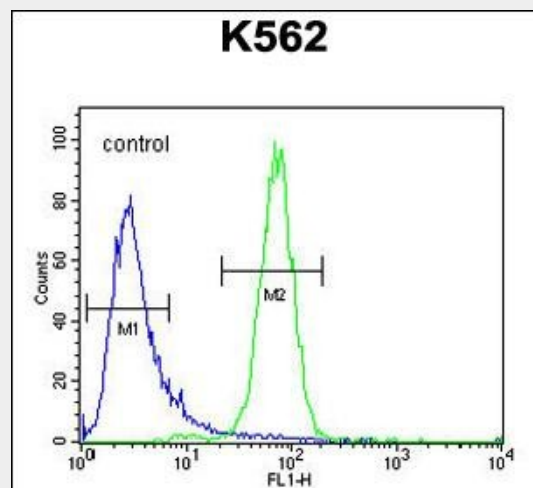
Anti-LEG1 Antibody (Center) at 1:1000 dilution + human liver lysate Lysates/proteins at 20 µg per lane. Secondary Goat Anti-Rabbit IgG, (H+L), Peroxidase conjugated at 1/10000 dilution. Predicted band size : 38 kDa Blocking/Dilution buffer: 5% NFDM/TBST.



LEG1 Antibody (Center) (Cat. #AP10021c) western blot analysis in K562 cell line lysates (35ug/lane). This demonstrates the LEG1 antibody detected the LEG1 protein (arrow).



LEG1 antibody (Center) (Cat. #AP10021c) immunohistochemistry analysis in formalin fixed and paraffin embedded human testis carcinoma followed by peroxidase conjugation of the secondary antibody and DAB staining. This data demonstrates the use of the LEG1 antibody (Center) for immunohistochemistry. Clinical relevance has not been evaluated.



LEG1 Antibody (Center) (Cat. #AP10021c) flow cytometric analysis of K562 cells (right histogram) compared to a negative control cell (left histogram). FITC-conjugated goat-anti-rabbit secondary antibodies were used for the analysis.