

**LCE2B Antibody (C-term)**  
**Affinity Purified Rabbit Polyclonal Antibody (Pab)**  
**Catalog # AP10027B****Specification**

---

**LCE2B Antibody (C-term) - Product Information**

Application	FC, WB,E
Primary Accession	<a href="#">O14633</a>
Other Accession	<a href="#">Q5TA82</a> , <a href="#">Q5TA81</a> , <a href="#">NP_055172.1</a>
Reactivity	Human
Host	Rabbit
Clonality	Polyclonal
Isotype	Rabbit IgG
Calculated MW	11219
Antigen Region	61-90

**LCE2B Antibody (C-term) - Additional Information****Gene ID** 26239**Other Names**

Late cornified envelope protein 2B, Late envelope protein 10, Skin-specific protein Xp5, Small proline-rich-like epidermal differentiation complex protein 1B, LCE2B, LEP10, SPRL1B, XP5

**Target/Specificity**

This LCE2B antibody is generated from rabbits immunized with a KLH conjugated synthetic peptide between 61-90 amino acids from the C-terminal region of human LCE2B.

**Dilution**

FC~~1:10~50

WB~~1:1000

E~~Use at an assay dependent concentration.

**Format**

Purified polyclonal antibody supplied in PBS with 0.09% (W/V) sodium azide. This antibody is purified through a protein A column, followed by peptide affinity purification.

**Storage**

Maintain refrigerated at 2-8°C for up to 2 weeks. For long term storage store at -20°C in small aliquots to prevent freeze-thaw cycles.

**Precautions**

LCE2B Antibody (C-term) is for research use only and not for use in diagnostic or therapeutic procedures.

**LCE2B Antibody (C-term) - Protein Information****Name** LCE2B

**Synonyms** LEP10, SPRL1B, XP5

**Function** Precursors of the cornified envelope of the stratum corneum.

**Tissue Location**

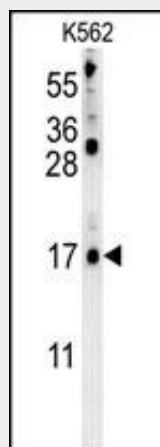
Skin-specific. Expression was readily detected in adult trunk skin, adult arm skin, fetal skin, penial skin, vulva, esophagus and tongue. Not expressed in the cervix, rectum, lung, colon, or placenta.

**LCE2B Antibody (C-term) - Protocols**

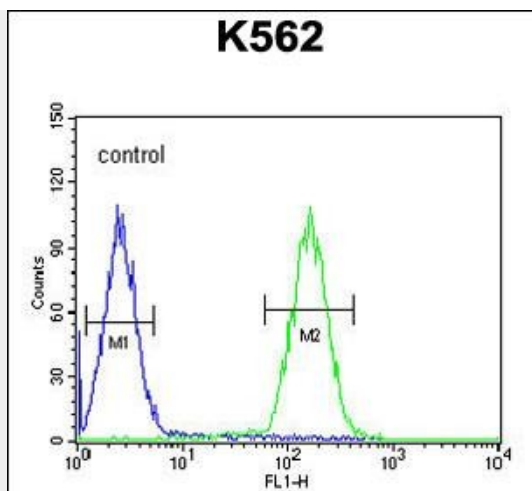
Provided below are standard protocols that you may find useful for product applications.

- [Western Blot](#)
- [Blocking Peptides](#)
- [Dot Blot](#)
- [Immunohistochemistry](#)
- [Immunofluorescence](#)
- [Immunoprecipitation](#)
- [Flow Cytometry](#)
- [Cell Culture](#)

**LCE2B Antibody (C-term) - Images**



LCE2B Antibody (C-term) (Cat. #AP10027b) western blot analysis in K562 cell line lysates (35ug/lane). This demonstrates the LCE2B antibody detected the LCE2B protein (arrow).



LCE2B Antibody (C-term) (Cat. #AP10027b) flow cytometric analysis of K562 cells (right histogram) compared to a negative control cell (left histogram). FITC-conjugated goat-anti-rabbit secondary antibodies were used for the analysis.