

**CRCT1 Antibody (N-term)**  
**Affinity Purified Rabbit Polyclonal Antibody (Pab)**  
**Catalog # AP10028a****Specification**

---

**CRCT1 Antibody (N-term) - Product Information**

Application	FC, IHC-P, WB,E
Primary Accession	<a href="#">O9UGL9</a>
Other Accession	<a href="#">NP_061933.1</a>
Reactivity	Human
Host	Rabbit
Clonality	Polyclonal
Isotype	Rabbit IgG
Calculated MW	9736
Antigen Region	1-30

**CRCT1 Antibody (N-term) - Additional Information****Gene ID** 54544**Other Names**

Cysteine-rich C-terminal protein 1, Protein NICE-1, CRCT1, C1orf42, NICE1

**Target/Specificity**

This CRCT1 antibody is generated from rabbits immunized with a KLH conjugated synthetic peptide between 1-30 amino acids from the N-terminal region of human CRCT1.

**Dilution**

FC~~1:10~50

IHC-P~~1:50~100

WB~~1:1000

E~~Use at an assay dependent concentration.

**Format**

Purified polyclonal antibody supplied in PBS with 0.09% (W/V) sodium azide. This antibody is purified through a protein A column, followed by peptide affinity purification.

**Storage**

Maintain refrigerated at 2-8°C for up to 2 weeks. For long term storage store at -20°C in small aliquots to prevent freeze-thaw cycles.

**Precautions**

CRCT1 Antibody (N-term) is for research use only and not for use in diagnostic or therapeutic procedures.

**CRCT1 Antibody (N-term) - Protein Information****Name** CRCT1

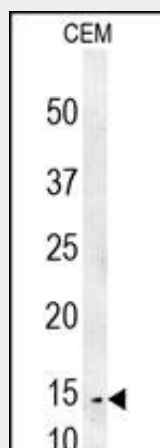
**Synonyms** C1orf42, NICE1

### CRCT1 Antibody (N-term) - Protocols

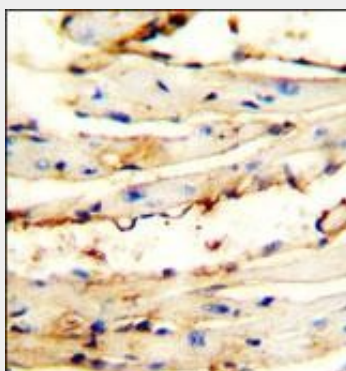
Provided below are standard protocols that you may find useful for product applications.

- [Western Blot](#)
- [Blocking Peptides](#)
- [Dot Blot](#)
- [Immunohistochemistry](#)
- [Immunofluorescence](#)
- [Immunoprecipitation](#)
- [Flow Cytometry](#)
- [Cell Culture](#)

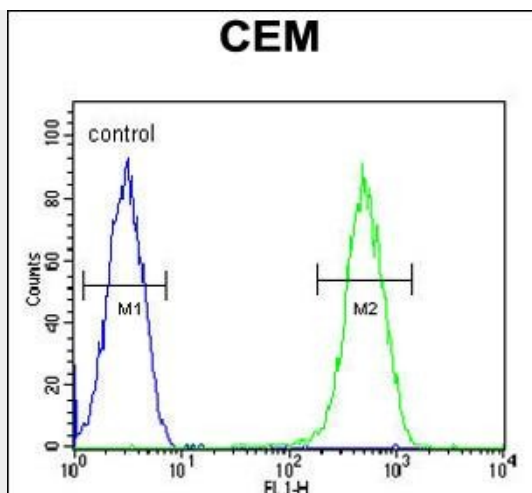
### CRCT1 Antibody (N-term) - Images



CRCT1 Antibody (N-term) (Cat. #AP10028a) western blot analysis in CEM cell line lysates (35ug/lane). This demonstrates the CRCT1 antibody detected the CRCT1 protein (arrow).



CRCT1 antibody (N-term) (Cat. #AP10028a) immunohistochemistry analysis in formalin fixed and paraffin embedded mouse heart tissue followed by peroxidase conjugation of the secondary antibody and DAB staining. This data demonstrates the use of the CRCT1 antibody (N-term) for immunohistochemistry. Clinical relevance has not been evaluated.



CRCT1 Antibody (N-term) (Cat. #AP10028a) flow cytometric analysis of CEM cells (right histogram) compared to a negative control cell (left histogram). FITC-conjugated goat-anti-rabbit secondary antibodies were used for the analysis.