

SLC7A13 Antibody (Center)
Affinity Purified Rabbit Polyclonal Antibody (Pab)
Catalog # AP10029c**Specification**

SLC7A13 Antibody (Center) - Product Information

Application	WB, IHC-P,E
Primary Accession	Q8TCU3
Other Accession	NP_620172.2
Reactivity	Human, Mouse
Host	Rabbit
Clonality	Polyclonal
Isotype	Rabbit IgG
Calculated MW	52114
Antigen Region	171-200

SLC7A13 Antibody (Center) - Additional Information**Gene ID** 157724**Other Names**

Solute carrier family 7 member 13, Sodium-independent aspartate/glutamate transporter 1, X-amino acid transporter 2, SLC7A13, AGT1, XAT2

Target/Specificity

This SLC7A13 antibody is generated from rabbits immunized with a KLH conjugated synthetic peptide between 171-200 amino acids from the Central region of human SLC7A13.

Dilution

WB~~1:1000
IHC-P~~1:50~100

Format

Purified polyclonal antibody supplied in PBS with 0.09% (W/V) sodium azide. This antibody is purified through a protein A column, followed by peptide affinity purification.

Storage

Maintain refrigerated at 2-8°C for up to 2 weeks. For long term storage store at -20°C in small aliquots to prevent freeze-thaw cycles.

Precautions

SLC7A13 Antibody (Center) is for research use only and not for use in diagnostic or therapeutic procedures.

SLC7A13 Antibody (Center) - Protein Information**Name** SLC7A13

Synonyms AGT1, XAT2

Function Associates with SLC3A1/rBAT to form a functional heterodimeric complex that transports anionic and neutral amino acids across the apical plasma membrane of renal epithelium. Preferentially mediates exchange transport, but can also operate via facilitated diffusion. May act as a major transporter for L-cystine in late proximal tubules, ensuring its reabsorption from the luminal fluid in exchange for cytosolic L-glutamate or L-aspartate.

Cellular Location

Apical cell membrane {ECO:0000250|UniProtKB:Q91WN3}; Multi-pass membrane protein

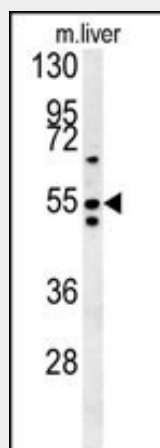
Tissue Location

Expressed in the kidney.

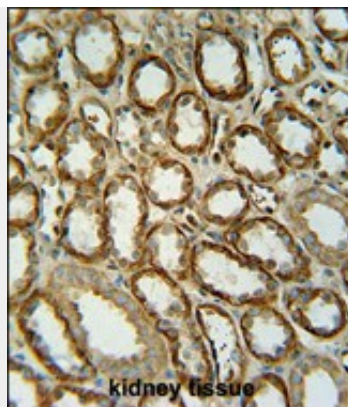
SLC7A13 Antibody (Center) - Protocols

Provided below are standard protocols that you may find useful for product applications.

- [Western Blot](#)
- [Blocking Peptides](#)
- [Dot Blot](#)
- [Immunohistochemistry](#)
- [Immunofluorescence](#)
- [Immunoprecipitation](#)
- [Flow Cytometry](#)
- [Cell Culture](#)

SLC7A13 Antibody (Center) - Images

SLC7A13 Antibody (Center) (Cat. #AP10029c) western blot analysis in mouse liver tissue lysates (15ug/lane). This demonstrates the SLC7A13 antibody detected SLC7A13 protein (arrow).



SLC7A13 antibody(Center) (Cat. #AP10029c) immunohistochemistry analysis in formalin fixed and paraffin embedded human kidney tissue followed by peroxidase conjugation of the secondary antibody and DAB staining. This data demonstrates the use of the SLC7A13 antibody(Center) for immunohistochemistry. Clinical relevance has not been evaluated.