

POTEB Antibody (C-term)
Affinity Purified Rabbit Polyclonal Antibody (Pab)
Catalog # AP10032b

Specification

POTEB Antibody (C-term) - Product Information

Application	FC, IHC-P, WB,E
Primary Accession	Q6S5H4
Other Accession	P0CG39 , P0CG38 , A5A3E0 , Q86YR6 , B2RU33 , H3BUK9 , NP_997238.2
Reactivity	Human
Host	Rabbit
Clonality	Polyclonal
Isotype	Rabbit IgG
Antigen Region	381-410

POTEB Antibody (C-term) - Additional Information

Other Names

POTE ankyrin domain family member B, ANKRD26-like family B member 1, Prostate, ovary, testis-expressed protein on chromosome 15, POTE-15, POTEB, A26B1, POTE15

Target/Specificity

This POTEB antibody is generated from rabbits immunized with a KLH conjugated synthetic peptide between 381-410 amino acids from the C-terminal region of human POTEB.

Dilution

FC~~1:10~50
IHC-P~~1:50~100
WB~~1:2000
E~~Use at an assay dependent concentration.

Format

Purified polyclonal antibody supplied in PBS with 0.09% (W/V) sodium azide. This antibody is purified through a protein A column, followed by peptide affinity purification.

Storage

Maintain refrigerated at 2-8°C for up to 2 weeks. For long term storage store at -20°C in small aliquots to prevent freeze-thaw cycles.

Precautions

POTEB Antibody (C-term) is for research use only and not for use in diagnostic or therapeutic procedures.

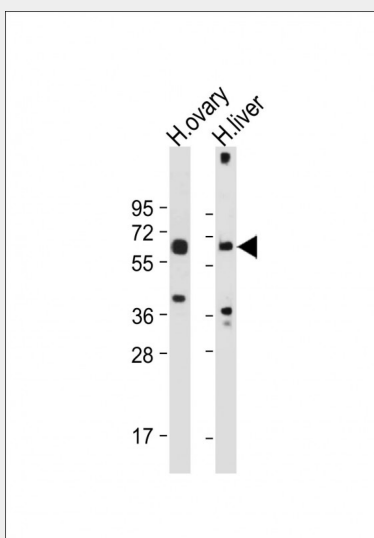
POTEB Antibody (C-term) - Protein Information

POTEB Antibody (C-term) - Protocols

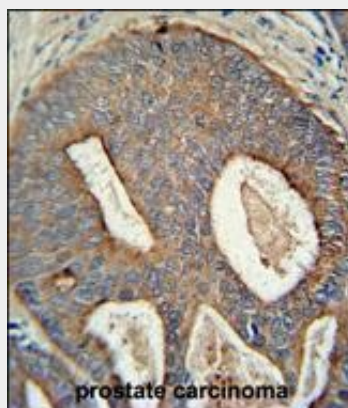
Provided below are standard protocols that you may find useful for product applications.

- [Western Blot](#)
- [Blocking Peptides](#)
- [Dot Blot](#)
- [Immunohistochemistry](#)
- [Immunofluorescence](#)
- [Immunoprecipitation](#)
- [Flow Cytometry](#)
- [Cell Culture](#)

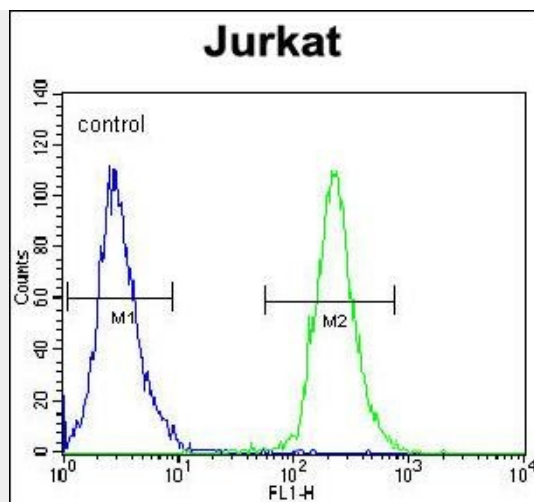
POTEB Antibody (C-term) - Images



All lanes : Anti-POTEB Antibody (C-term) at 1:2000 dilution Lane 1: Human ovary tissue lysate
Lane 2: Human liver tissue lysate Lysates/proteins at 20 µg per lane. Secondary Goat Anti-Rabbit IgG, (H+L), Peroxidase conjugated at 1/10000 dilution. Predicted band size : 66 kDa
Blocking/Dilution buffer: 5% NFDM/TBST.



POTEB antibody (C-term) (Cat. #AP10032b) immunohistochemistry analysis in formalin fixed and paraffin embedded human prostate carcinoma followed by peroxidase conjugation of the secondary antibody and DAB staining. This data demonstrates the use of the POTEB antibody (C-term) for immunohistochemistry. Clinical relevance has not been evaluated.



POTEB Antibody (C-term) (Cat. #AP10032b) flow cytometric analysis of Jurkat cells (right histogram) compared to a negative control cell (left histogram). FITC-conjugated goat-anti-rabbit secondary antibodies were used for the analysis.