

MCEE Antibody (C-term)
Affinity Purified Rabbit Polyclonal Antibody (Pab)
Catalog # AP10040B**Specification**

MCEE Antibody (C-term) - Product Information

Application	WB, IHC-P,E
Primary Accession	Q96PE7
Other Accession	NP_115990.3
Reactivity	Human, Mouse
Host	Rabbit
Clonality	Polyclonal
Isotype	Rabbit IgG
Calculated MW	18749
Antigen Region	128-156

MCEE Antibody (C-term) - Additional Information**Gene ID** 84693**Other Names**

Methylmalonyl-CoA epimerase, mitochondrial, DL-methylmalonyl-CoA racemase, MCEE

Target/Specificity

This MCEE antibody is generated from rabbits immunized with a KLH conjugated synthetic peptide between 128-156 amino acids from the C-terminal region of human MCEE.

Dilution

WB~~1:1000

IHC-P~~1:50~100

Format

Purified polyclonal antibody supplied in PBS with 0.09% (W/V) sodium azide. This antibody is purified through a protein A column, followed by peptide affinity purification.

Storage

Maintain refrigerated at 2-8°C for up to 2 weeks. For long term storage store at -20°C in small aliquots to prevent freeze-thaw cycles.

Precautions

MCEE Antibody (C-term) is for research use only and not for use in diagnostic or therapeutic procedures.

MCEE Antibody (C-term) - Protein Information**Name** MCEE ([HGNC:16732](#))**Function** Methylmalonyl-CoA epimerase involved in propionyl-CoA metabolism.

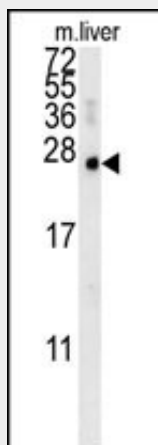
Cellular Location
Mitochondrion.

MCEE Antibody (C-term) - Protocols

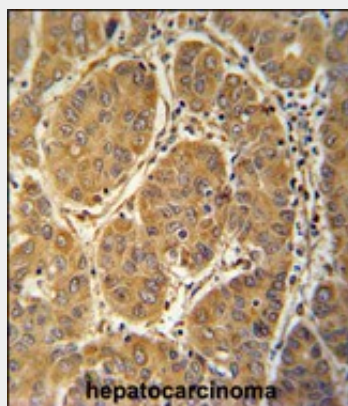
Provided below are standard protocols that you may find useful for product applications.

- [Western Blot](#)
- [Blocking Peptides](#)
- [Dot Blot](#)
- [Immunohistochemistry](#)
- [Immunofluorescence](#)
- [Immunoprecipitation](#)
- [Flow Cytometry](#)
- [Cell Culture](#)

MCEE Antibody (C-term) - Images



MCEE Antibody (C-term) (Cat. #AP10040b) western blot analysis in mouse liver tissue lysates (15ug/lane). This demonstrates the MCEE antibody detected MCEE protein (arrow).



MCEE antibody (C-term) (Cat. #AP10040b) immunohistochemistry analysis in formalin fixed and paraffin embedded human hepatocarcinoma followed by peroxidase conjugation of the secondary antibody and DAB staining. This data demonstrates the use of the MCEE antibody (C-term) for immunohistochemistry. Clinical relevance has not been evaluated.