

ATXN7L3B Antibody (Center)
Affinity Purified Rabbit Polyclonal Antibody (Pab)
Catalog # AP10056c**Specification**

ATXN7L3B Antibody (Center) - Product Information

| | |
|-------------------|--------------------------------|
| Application | WB, FC,E |
| Primary Accession | O96GX2 |
| Other Accession | NP_001129734.1 |
| Reactivity | Human |
| Host | Rabbit |
| Clonality | Polyclonal |
| Isotype | Rabbit IgG |
| Antigen Region | 32-62 |

ATXN7L3B Antibody (Center) - Additional Information**Gene ID** 552889**Other Names**

Putative ataxin-7-like protein 3B, ATXN7L3B

Target/Specificity

This LOC552889 antibody is generated from rabbits immunized with a KLH conjugated synthetic peptide between 32-62 amino acids from the Central region of human LOC552889.

Dilution

WB~~1:1000

FC~~1:10~50

E~~Use at an assay dependent concentration.

Format

Purified polyclonal antibody supplied in PBS with 0.09% (W/V) sodium azide. This antibody is purified through a protein A column, followed by peptide affinity purification.

Storage

Maintain refrigerated at 2-8°C for up to 2 weeks. For long term storage store at -20°C in small aliquots to prevent freeze-thaw cycles.

Precautions

ATXN7L3B Antibody (Center) is for research use only and not for use in diagnostic or therapeutic procedures.

ATXN7L3B Antibody (Center) - Protein Information**Name** ATXN7L3B**Function** By binding to ENY2, interferes with the nuclear functions of the deubiquitinase (DUB)

module of the SAGA complex which consists of ENY2, ATXN7, ATXN7L3 and the histone deubiquitinating component USP22. Affects USP22 DUB activity toward histones indirectly by changing the subcellular distribution of ENY2 and altering ENY2 availability for ATXN7L3 interaction. Regulates H2B monoubiquitination (H2Bub1) levels through cytoplasmic sequestration of ENY2 resulting in loss of nuclear ENY2-ATXN7L3 association which destabilizes ATXN7L3. Affects protein expression levels of ENY2 and ATXN7L3.

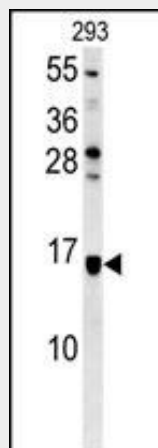
Cellular Location

Cytoplasm.

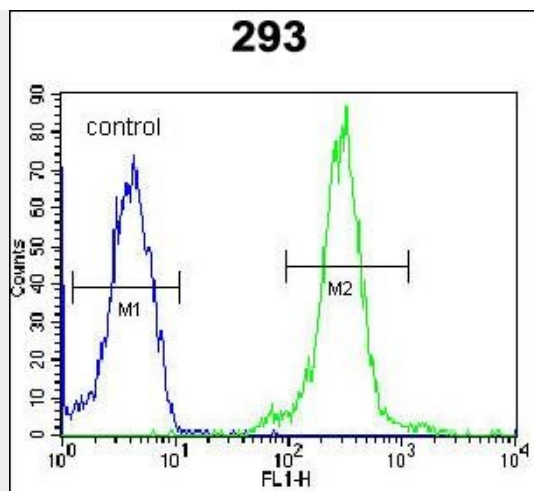
ATXN7L3B Antibody (Center) - Protocols

Provided below are standard protocols that you may find useful for product applications.

- [Western Blot](#)
- [Blocking Peptides](#)
- [Dot Blot](#)
- [Immunohistochemistry](#)
- [Immunofluorescence](#)
- [Immunoprecipitation](#)
- [Flow Cytometry](#)
- [Cell Culture](#)

ATXN7L3B Antibody (Center) - Images

LOC552889 Antibody (Center) (Cat. #AP10056c) western blot analysis in 293 cell line lysates (35ug/lane). This demonstrates the LOC552889 antibody detected the LOC552889 protein (arrow).



LOC552889 Antibody (Center) (Cat. #AP10056c) flow cytometric analysis of 293 cells (right histogram) compared to a negative control cell (left histogram). FITC-conjugated goat-anti-rabbit secondary antibodies were used for the analysis.