

ARL14EP Antibody (C-term)
Affinity Purified Rabbit Polyclonal Antibody (Pab)
Catalog # AP10061b**Specification**

ARL14EP Antibody (C-term) - Product Information

Application	WB,E
Primary Accession	Q8N8R7
Other Accession	Q5FVK8 , Q8BIX3 , Q5EA92 , NP_689529.1
Reactivity	Human
Predicted	Bovine, Mouse, Rat
Host	Rabbit
Clonality	Polyclonal
Isotype	Rabbit IgG
Antigen Region	228-257

ARL14EP Antibody (C-term) - Additional Information**Gene ID** 120534**Other Names**

ARL14 effector protein, ARF7 effector protein, ARL14EP, ARF7EP, C11orf46

Target/Specificity

This C11orf46 antibody is generated from rabbits immunized with a KLH conjugated synthetic peptide between 228-257 amino acids from the C-terminal region of human C11orf46.

Dilution

WB~~1:1000

E~~Use at an assay dependent concentration.

Format

Purified polyclonal antibody supplied in PBS with 0.09% (W/V) sodium azide. This antibody is purified through a protein A column, followed by peptide affinity purification.

Storage

Maintain refrigerated at 2-8°C for up to 2 weeks. For long term storage store at -20°C in small aliquots to prevent freeze-thaw cycles.

Precautions

ARL14EP Antibody (C-term) is for research use only and not for use in diagnostic or therapeutic procedures.

ARL14EP Antibody (C-term) - Protein Information**Name** ARL14EP**Synonyms** ARF7EP, C11orf46

Function Through its interaction with ARL14 and MYO1E, may connect MHC class II-containing cytoplasmic vesicles to the actin network and hence controls the movement of these vesicles along the actin cytoskeleton in dendritic cells.

Cellular Location

Cytoplasm.

Tissue Location

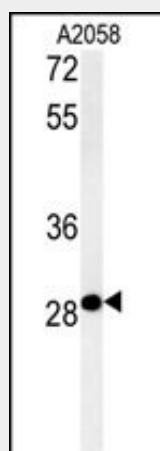
Expressed in the immune system.

ARL14EP Antibody (C-term) - Protocols

Provided below are standard protocols that you may find useful for product applications.

- [Western Blot](#)
- [Blocking Peptides](#)
- [Dot Blot](#)
- [Immunohistochemistry](#)
- [Immunofluorescence](#)
- [Immunoprecipitation](#)
- [Flow Cytometry](#)
- [Cell Culture](#)

ARL14EP Antibody (C-term) - Images



C11orf46 Antibody (C-term) (Cat. #AP10061b) western blot analysis in A2058 cell line lysates (35ug/lane). This demonstrates the C11orf46 antibody detected the C11orf46 protein (arrow).