

SLC43A2 Antibody (Center)
Affinity Purified Rabbit Polyclonal Antibody (Pab)
Catalog # AP10062c

Specification

SLC43A2 Antibody (Center) - Product Information

Application	FC, WB,E
Primary Accession	Q8N370
Other Accession	Q8CGA3 , Q0VCM6 , NP_689559.1
Reactivity	Human, Mouse
Predicted	Bovine
Host	Rabbit
Clonality	Polyclonal
Isotype	Rabbit IgG
Calculated MW	62747
Antigen Region	236-265

SLC43A2 Antibody (Center) - Additional Information

Gene ID 124935

Other Names

Large neutral amino acids transporter small subunit 4, L-type amino acid transporter 4, Solute carrier family 43 member 2, SLC43A2, LAT4

Target/Specificity

This SLC43A2 antibody is generated from rabbits immunized with a KLH conjugated synthetic peptide between 236-265 amino acids from the Central region of human SLC43A2.

Dilution

FC~~1:10~50

WB~~1:1000

E~~Use at an assay dependent concentration.

Format

Purified polyclonal antibody supplied in PBS with 0.09% (W/V) sodium azide. This antibody is purified through a protein A column, followed by peptide affinity purification.

Storage

Maintain refrigerated at 2-8°C for up to 2 weeks. For long term storage store at -20°C in small aliquots to prevent freeze-thaw cycles.

Precautions

SLC43A2 Antibody (Center) is for research use only and not for use in diagnostic or therapeutic procedures.

SLC43A2 Antibody (Center) - Protein Information

Name SLC43A2 ([HGNC:23087](#))

Synonyms LAT4

Function Uniporter that mediates the transport of the stereospecific L-phenylalanine, L-methionine and L-branched-chain amino acids, between the extracellular space and the cytoplasm and may control the transepithelial (re)absorption of neutral amino acid in kidney and small intestine (PubMed:[15659399](#), PubMed:[30379325](#)). The transport activity is mediated through facilitated diffusion and is sodium ions-, chloride ions- and pH-independent (PubMed:[15659399](#)).

Cellular Location

Cell membrane; Multi-pass membrane protein. Basolateral cell membrane {ECO:0000250|UniProtKB:Q8CGA3}. Note=Located at the basolateral membrane in the small intestine enterocytes, kidney proximal tubule, thick ascending limb and, to a minor extent, of distal convoluted tubule epithelial cells. {ECO:0000250|UniProtKB:Q8CGA3}

Tissue Location

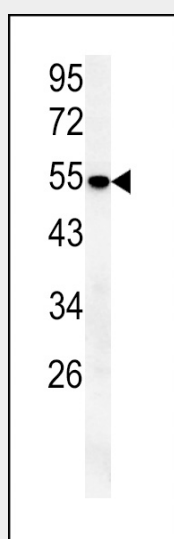
Detected in several tissues with higher expression in placenta, kidney and peripheral blood leukocytes (PubMed:15659399) In the kidney, is detected in epithelial cells of the distal tubule and collecting duct (PubMed:15659399). In the intestine, is expressed mainly in crypt cells of the intestinal microvilli and epithelial cells in the base of the villus (PubMed:15659399)

SLC43A2 Antibody (Center) - Protocols

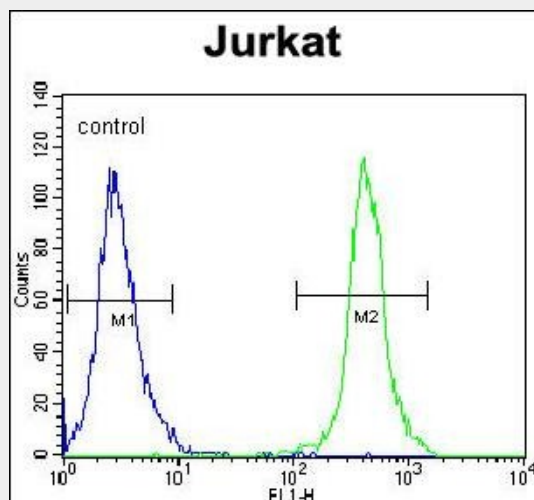
Provided below are standard protocols that you may find useful for product applications.

- [Western Blot](#)
- [Blocking Peptides](#)
- [Dot Blot](#)
- [Immunohistochemistry](#)
- [Immunofluorescence](#)
- [Immunoprecipitation](#)
- [Flow Cytometry](#)
- [Cell Culture](#)

SLC43A2 Antibody (Center) - Images



SLC43A2 Antibody (Center) (Cat. #AP10062c) western blot analysis in mouse lung tissue lysates (15ug/lane). This demonstrates the SLC43A2 antibody detected SLC43A2 protein (arrow).



SLC43A2 Antibody (Center) (Cat. #AP10062c) flow cytometric analysis of Jurkat cells (right histogram) compared to a negative control cell (left histogram). FITC-conjugated goat-anti-rabbit secondary antibodies were used for the analysis.

SLC43A2 Antibody (Center) - Citations

- [Expression of proposed methionine transporters along the gastrointestinal tract of pigs and their regulation by dietary methionine sources](#)