

**TMEM214 Antibody (N-term)**  
**Affinity Purified Rabbit Polyclonal Antibody (Pab)**  
**Catalog # AP10068a****Specification**

---

**TMEM214 Antibody (N-term) - Product Information**

Application	FC, IHC-P, WB,E
Primary Accession	<a href="#">O6NUQ4</a>
Other Accession	<a href="#">NP_060197.4</a>
Reactivity	Human
Host	Rabbit
Clonality	Polyclonal
Isotype	Rabbit IgG
Calculated MW	77151
Antigen Region	38-66

**TMEM214 Antibody (N-term) - Additional Information****Gene ID** 54867**Other Names**

Transmembrane protein 214, TMEM214

**Target/Specificity**

This TMEM214 antibody is generated from rabbits immunized with a KLH conjugated synthetic peptide between 38-66 amino acids from the N-terminal region of human TMEM214.

**Dilution**

FC~~1:10~50

IHC-P~~1:50~100

WB~~1:1000

E~~Use at an assay dependent concentration.

**Format**

Purified polyclonal antibody supplied in PBS with 0.09% (W/V) sodium azide. This antibody is purified through a protein A column, followed by peptide affinity purification.

**Storage**

Maintain refrigerated at 2-8°C for up to 2 weeks. For long term storage store at -20°C in small aliquots to prevent freeze-thaw cycles.

**Precautions**

TMEM214 Antibody (N-term) is for research use only and not for use in diagnostic or therapeutic procedures.

**TMEM214 Antibody (N-term) - Protein Information****Name** TMEM214

**Function** Critical mediator, in cooperation with CASP4, of endoplasmic reticulum-stress induced apoptosis. Required or the activation of CASP4 following endoplasmic reticulum stress.

**Cellular Location**

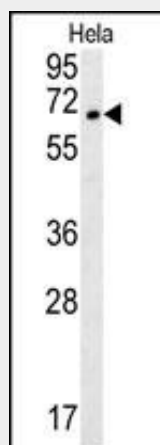
Endoplasmic reticulum membrane; Multi-pass membrane protein

**TMEM214 Antibody (N-term) - Protocols**

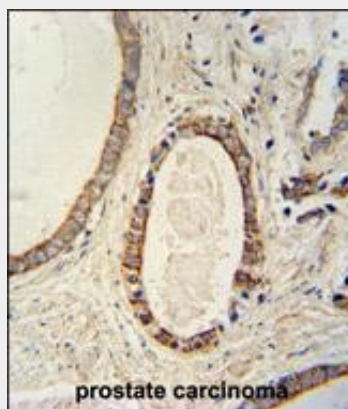
Provided below are standard protocols that you may find useful for product applications.

- [Western Blot](#)
- [Blocking Peptides](#)
- [Dot Blot](#)
- [Immunohistochemistry](#)
- [Immunofluorescence](#)
- [Immunoprecipitation](#)
- [Flow Cytometry](#)
- [Cell Culture](#)

**TMEM214 Antibody (N-term) - Images**

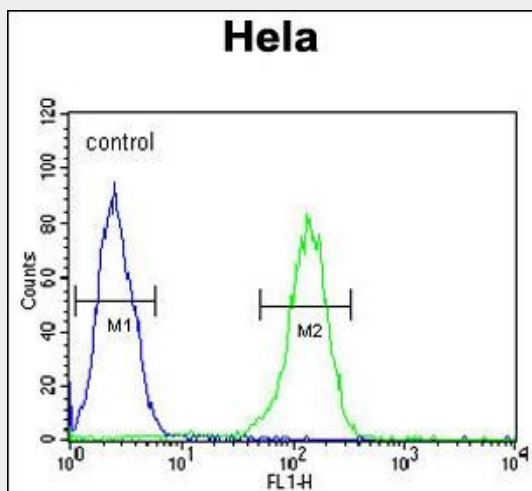


TMEM214 Antibody (N-term) (Cat. #AP10068a) western blot analysis in HeLa cell line lysates (35ug/lane). This demonstrates the TMEM214 antibody detected the TMEM214 protein (arrow).



TMEM214 antibody (N-term) (Cat. #AP10068a) immunohistochemistry analysis in formalin fixed and paraffin embedded human prostate carcinoma followed by peroxidase conjugation of the

secondary antibody and DAB staining. This data demonstrates the use of the TMEM214 antibody (N-term) for immunohistochemistry. Clinical relevance has not been evaluated.



TMEM214 Antibody (N-term) (Cat. #AP10068a) flow cytometric analysis of Hela cells (right histogram) compared to a negative control cell (left histogram).FITC-conjugated goat-anti-rabbit secondary antibodies were used for the analysis.